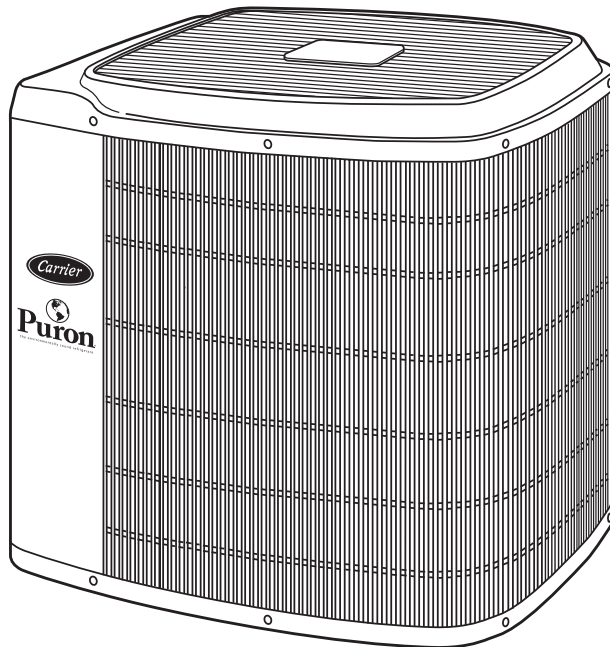




Product Data

Performance™ 14 38TSA (60 Hz) Air Conditioner with Puron® Refrigerant

Sizes 024 thru 060



Performance
SERIES

Carrier's Performance™ 14 Air Conditioners with Puron® refrigerant provide a collection of features unmatched by any other family of equipment. The 38TSA family has been designed utilizing Carrier's Puron refrigerant. The environmentally sound refrigerant allows you to make a responsible decision in the protection of the earth's ozone layer. Carrier's Performance 14 systems with Puron refrigerant meet the Energy Star® guidelines for energy efficiency.

FEATURES

Puron® Environmentally Sound Refrigerant — Is Carrier's unique refrigerant designed to help protect the environment. Puron is an HFC refrigerant that does not contain chlorine which is damaging to the ozone layer. The most important advantage of Puron refrigerant is that it has not been banned in future air conditioning systems as the traditional refrigerant R-22 has been. Puron refrigerant is in service in thousands of systems providing highly reliable, environmentally sound performance. For specific R-22 phase out information see your Carrier distributor.

Carrier's Infinity® Controls — These industry-leading controls, when installed with Carrier's Ideal Humidity™ variable-speed furnaces or fan coils, provide the homeowner with:

- unparalleled control of temperature, humidity, indoor air quality, and zoning
- unprecedented ease of use
- simple operation through on-screen, text-based service reminders

Optional remote access through telephone or Internet is also available when combined with a remote connectivity kit.

WeatherArmor™ III Protection Package — This three-part protection system begins with the galvanized steel cabinet. Once coated with a layer of zinc phosphate, a modified polyester powder coating is then applied and baked on, providing each unit with a hard, smooth finish that will last for many years.

Additionally, the coil protector, made of a coated steel wire grid with vertical 3/8 in. spacing, is designed to help protect the coil from inclement weather, vandalism and incidental damage. It provides protection

while not restricting airflow and maintaining ease of coil cleaning. Finally, all screws on cabinet exterior are ceramic coated for a long-lasting, rust-resistant, quality appearance..

High Efficiency Performance — Is delivered through a combination of features including Carrier's Puron refrigerant, scroll compressor, and advanced heat transfer surfaces. Efficiency ratings are 14 SEER (Seasonal Energy Efficiency Ratio) with enhanced ratings of up to 15.75 SEER. Sophisticated heat transfer surfaces utilized in Carrier's 38TSA design allow heat to easily be transferred to the outdoor air and requires less energy. The scroll compressor found in the 38TSA design performs quietly and adds to the overall efficiency of the system. Finally, Carrier's Puron refrigerant operates more efficiently than R-22 refrigerant found in other systems. The efficiency levels provided by the 38TSA provide end users with lower costs of operation than traditional air conditioning systems.

Assured Future Service — By utilizing the environmentally sound refrigerant, Puron®, 38TSA models will remain serviceable well into the future. The Clean Air Act of 1990 has placed a cap on production of most other refrigerants which has scheduled reductions beginning in 2004. The resulting cap in production ultimately results in a complete ban on many other refrigerants in new equipment by the year 2010. These changes, required by federal law, mean the supply of other refrigerants may be limited in the near future making Puron® the correct choice when considering long term serviceability.

Highly Reliable Performance — Is delivered through the superior design of the system and componentry. The reliability of the Performance™ 14

models have been proven to provide the lowest incidence of warranty service of any product in the Carrier family. Long term reliability is assured through the use of both high and low pressure switches which will not allow the system to operate in the event of a significant change in operating pressure. In doing this, the system is protected from damage if an unusual condition arises. Finally, Carrier includes a special liquid line filter drier designed to trap moisture and contaminants which could otherwise shorten the life of the system.

Carrier's Silencer System — Is one of the most sought after features of the 38TSA family. Extremely low operating sound is the result of special attention to the air moving through the outdoor unit, a specially designed sound enclosure surrounding the compressor, and an exclusive laminated plate beneath the compressor to eliminate sound transmission to the rest of the system.

Application Versatility — Carrier's systems utilizing Puron® refrigerant have the same application guidelines as other systems. Applications which include long line sets (50 to 175 ft) or applications which require the system to operate at low outdoor temperatures (below 55°F, 12.8°C) are approved under Carrier's standard guidelines.

Carrier Coils and Fan Coils to Complete the System — Carrier specially designs both the outdoor product and indoor coil products to operate with assured reliability and performance. A wide range of indoor coil options are listed in the ratings section of this publication.

Special Protective Devices — High- and low-pressure switches and internal protection in the compressor including temperature and current sensing overloads

prevent operation under potentially damaging circumstances. A special liquid line filter drier designed to trap nearly 4 times the volume of contaminants of standard driers provides superior protection from moisture trapped in the system.

Electrical Range — 208/230v, single phase.

Wide Range of Sizes — Available in six sizes: 2 through 5 tons.

Totally Enclosed Fan Motor — Protected from adverse weather conditions.

Unit Design — Enhanced copper and aluminum heat transfer surfaces with vertical air discharge to direct air up and away from the area.

External Service Valves — Both service valves are back seating type valves which are externally located. These unique valves allow service technicians to evacuate or charge the system in less time than standard service valves.

Easy Serviceability — Easy removal of panels provides access to both electrical and refrigerant carrying components, simplifying installation and service. All models are equipped with a compressor terminal plug.

Agency Approvals — 38TSA models are listed with UL (U.S. and Canada), ARI, and CEC. Special endorsements have also been awarded these products by Energy Star® which recognizes energy efficient products.

Limited Warranty — A 10-year limited warranty on compressor and 5-year limited warranty on parts.



CERTIFICATION APPLIES ONLY WHEN THE COMPLETE SYSTEM IS LISTED WITH ARI.



* As an ENERGY STAR® partner, Carrier Corporation has determined that this product meets the ENERGY STAR® guidelines for energy efficiency.



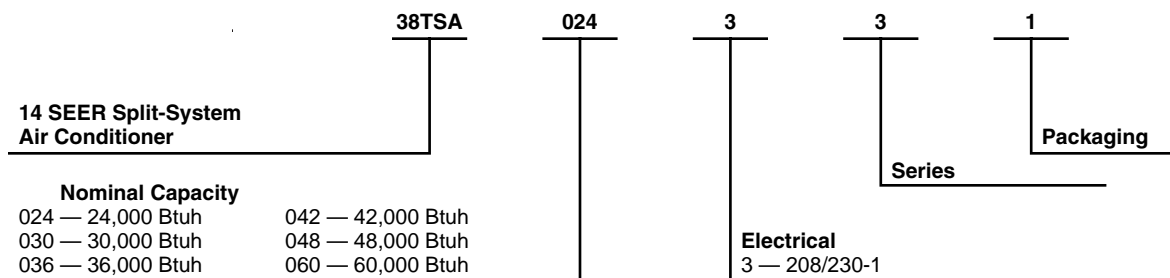
APPROVALS
ISO 9001
EN 29001
BS 5750 PART 1
ANSI/ASQC Q91

CERTIFICATE NO. FM 28768

REGISTERED QUALITY SYSTEM

*Refer to the combination ratings in the Product Data Digest for system combinations meeting ENERGY STAR® efficiency standards.

Model number nomenclature



Physical data

Unit Size-Series	024-34	030-33	036-33	042-33	048-31	060-30
Operating Weight (Lb)	290	290	293	294	312	362
COMPRESSOR Type	Scroll					
REFRIGERANT Control	Puron® (R-410A)					
Charge (Lb)	TXV (Hard Shutoff)†					
	9.35	9.11	9.83	9.66	12.00	15.00
COND FAN Air Discharge	Propeller Type, Direct Drive					
Air Qty (CFM)	Vertical					
Motor HP	2400	2400	2800	2800	2800	3800
Motor RPM	1/8	1/8	1/5	1/5	1/15	1/5
	825	825	825	825	825	825
COND COIL Face Area (Sq ft)	Copper Tube, Aluminum Plate Fin					
Fins per In.	15.2	18.25	18.25	18.25	18.3	24.5
Rows	20	20	20	20	20	20
Circuits	2	2	2	2	2	2
	4	4	4	4	4	6
VALVE CONNECT. (In. ID)	Sweat					
Vapor	5/8	3/4		7/8		
Liquid	3/8					
REFRIGERANT TUBES* (In. OD)						
Vapor (0-50 Ft Tube Length)	5/8	3/4		7/8		1-1/8
Vapor (Max Diameter for Long-Line Applications)	3/4	7/8		1-1/8		
Liquid (0-50 Ft Tube Length)	3/8					
Liquid (For Long-Line Applications)	3/8					

NOTE: See unit Installation Instructions for proper installation.

* For tubing sets greater than 50 ft horizontal and/or 20 ft vertical differential, consult Residential Split System Long-Line Application Guideline and Service Manual.

†TXV not factory supplied.

CHARGING SUBCOOLING (TXV-TYPE EXPANSION DEVICE*)

UNIT SIZE-SERIES	REQUIRED SUBCOOLING (°F)
024-34	10
030-33	8
036-33	9
042-33	7
048-31	10
060-30	10

* Must be a Puron® approved hard shutoff TXV.

Accessories

ORDERING NO.	DESCRIPTION
KAATD0101TDR	Time-Delay Relay — All Sizes
KSALA0301410	Low-Ambient Pressure Switch — All Sizes
KSALA0401AAA*	MotorMaster® Low-Ambient Controller — All Sizes
KAAFT0101AAA†	Evaporator Freeze Thermostat — All Sizes
KAAWS0101AAA†	Winter Start Control — All Sizes
KSACY0101AAA	Cycle Protector — All Sizes

Accessories continued

ORDERING NO.	DESCRIPTION
KSAHS1501AAA	Start Assist — Capacitor and Relay — Sizes 024-048
KSAHS1601AAA	Start Assist — Capacitor and Relay — Size 060
KAACS0201PTC	Start Assist — PTC — Sizes 024-060
KAACH1201AAA	Crankcase Heater — All Sizes
KSATX0201PUR	Puron® Thermostatic Expansion Valve (Hard Shutoff) — Sizes 024, 030
KSATX0301PUR	Puron® Thermostatic Expansion Valve (Hard Shutoff) — Sizes 036, 042
KSATX0401PUR	Puron® Thermostatic Expansion Valve (Hard Shutoff) — Size 048
KSATX0501PUR	Puron® Thermostatic Expansion Valve (Hard Shutoff) — Size 060
KSAPX0101PIS	Piston Body — All Sizes
HC38GE231 (RCD)	Ball Bearing Fan Motor — Sizes 024-048
HC38GE232 (RCD)	Ball Bearing Fan Motor — Size 060
KH45LG140 (RCD)	Filter Drier (Suction Line) — Sizes 024–036
KH45LG141 (RCD)	Filter Drier (Suction Line) — Size 042
KAALS0201LLS	Liquid-Line Solenoid Valve — All Sizes
KSASF0101AAA	Support Feet — All Sizes
KAACF0801MED	Coastal Filter — All Sizes

* Fan motor with ball bearings required.

† See low-ambient controller Installation Instructions for application.

THERMOSTAT/SUBBASE PKG	DESCRIPTION
TSTATCCPRH01-B	Thermidstat™ Control — Non-Programmable/Programmable Thermostat with Humidity Control
TSTATCCPAC01-B	Thermostat — Auto Changeover, 7-Day Programmable, °F/°C, 1-Stage Heat, 1-Stage Cool
TSTATCCNAC01-B	Thermostat — Auto Changeover, Non-Programmable, °F/°C, 1-Stage Heat, 1-Stage Cool
TSTATCCSAC01	Thermostat — Manual Changeover, 5-2 Day Programmable, °F/°C, 1-Stage Heat, 1-Stage Cool
TSTATCCBAC01-B	Builder's Thermostat — Manual Changeover, Non-Programmable, °F/°C, 1 Stage Heat, 1-Stage Cool
TSTATXXSEN01-B	Outdoor Air Temperature Sensor
TSTATXXNBP01	Backplate for Non-Programmable Thermostat
TSTATXXPBP01	Backplate for Programmable Thermostat
TSTATXXBBP01	Backplate for Builder's Thermostat
TSTATXXSBP01	Backplate for Standard Thermostat
TSTATXXCNV10	Thermostat Conversion Kit (4 to 5 wire) — 10 Pack

INFINITY®* CONTROLS	DESCRIPTION
SYSTXCCUID01	Infinity Control Deluxe 7-Day Programmable (Wall-mounted system control.)
SYSTXCCUIZ01	Z Infinity Control Deluxe Zoning 7-Day Programmable (Wall-mounted control for a multi-zone system.)
SYSTXCC4ZC01	O Infinity 4-Zone Damper Control Module (Wall-mounted control for a four-zone system.)
SYSTXCCSMS01	N Infinity Smart Sensor (Optional wall control used to monitor temperature and/or fan control in an individual zone.)
SYSTXCCRRS01	I Infinity Remote Room Sensor (Monitors temperature in an individual zone.)
SYSTXCCSAM01	G Infinity System Access Module (Hardware for wireless and control via phone or internet.)
SYSTXCCNIM01**	Infinity Network Interface Module (Connects Heat Recovery and Energy Recovery Ventilators or older two-speed outdoor models to system.)
SYSTXXXBPU01	Decorative Back Plate for Infinity Control (Decorative wall plate.)

* When applied with Carrier's IdealHumidity™ series 58MVP, 58CVA (X), and FE Indoor Models.

** Must be installed in Dual-Fuel Infinity system applications.

Accessory usage guideline

ACCESSORY	REQUIRED FOR LOW-AMBIENT APPLICATIONS (Below 55°F)	REQUIRED FOR LONG-LINE APPLICATIONS* (Over 50 Ft)	REQUIRED FOR SEA COAST APPLICATIONS (Within 2 Miles)
Crankcase Heater	Yes	Yes	No
Evaporator Freeze Thermostat	Yes	No	No
Winter Start Control	Yes†	No	No
Accumulator	No	No	No
Compressor Start Assist — Capacitor and Relay	Yes	Yes	No
Low-Ambient Controller or Low-Ambient Pressure Switch	Yes	No	No
Wind Baffle	See Low-Ambient Instructions	No	No
Coastal Filter	No	No	Yes
Support Feet	Recommended	No	Recommended
Liquid-Line Solenoid Valve or Hard Shutoff TXV	No	See Long-Line Application Guideline	No
Ball Bearing Fan Motor	Yes‡	No	No

* For Tubing line sets greater than 50 ft horizontal and/or 20 ft vertical differential, refer to Residential Split System Long-Line Application Guideline and Service Manual.

† Only when low-pressure switch is used.

‡ Required for low-ambient controller (full modulation feature) and MotorMaster® Control only.

Accessory description and usage (Listed alphabetically)

1. Ball-Bearing Fan Motor

A fan motor with ball bearings which permits speed reduction while maintaining bearing lubrication.

Usage Guideline:

Required on all units when low-ambient controller (full modulation feature) or MotorMaster®—Low-Ambient Controller is installed.

2. Coastal Filter

A mesh screen inserted under the top cover and inside the base pan to protect the condenser coil from salt damage without restricting airflow.

3. Compressor Start Assist – Capacitor and Relay

Start capacitor and relay gives a "hard" boost to compressor motor at each start up.

Usage Guideline:

Required for reciprocating compressors in the following applications:

Long line

Low ambient

Hard shut off expansion valve on indoor coil

Liquid line solenoid on indoor coil

Required for scroll compressors in the following applications:

Long line

Low ambient

Suggested for all compressors in areas with a history of low voltage problems.

4. Compressor Start Assist — PTC Type

Solid state electrical device which gives a "soft" boost to the reciprocating compressor at each start-up.

Usage Guideline:

Suggested in installations with marginal power supply.

5. Crankcase Heater

An electric resistance heater which mounts to the base of the compressor to keep the lubricant warm during off cycles. Improves compressor lubrication on restart and minimizes the chance of liquid slugging.

Usage Guideline:

Required in low ambient applications.

Required in long line applications.

Suggested in all commercial applications.

6. Evaporator Freeze Thermostat

An SPST temperature-actuated switch that stops unit operation when evaporator reaches freeze-up conditions.

Usage Guideline:

Required when low ambient kit has been added.

7. Liquid-Line Solenoid Valve (LLS)

This device serves two purposes. It is an electrically operated shutoff valve which stops and starts refrigerant liquid flow in response to compressor operation. It maintains a column of refrigerant liquid ready for action at next compressor operation cycle. It also provides system protection against off-cycle refrigerant migration.

Note: When LLS is used with reciprocating compressors, Compressor Start Assist — Capacitor and Relay is required.

Usage Guideline:

Required in air conditioner long line applications with a piston indoor metering device to prevent off cycle refrigerant migration. A hard shut off TXV can be used instead of an LLS in single flow air conditioner applications. See Long Line Application Guideline.

8. MotorMaster®—Low-Ambient Controller

A fan-speed control device activated by a temperature sensor, designed to control condenser fan motor speed in response to the saturated, condensing temperature during operation in cooling mode only. For outdoor temperatures down to -20°F (-28.9°C), it maintains condensing temperature at $100^{\circ}\text{F} \pm 10^{\circ}\text{F}$ ($37.8^{\circ}\text{C} \pm 12^{\circ}\text{C}$).

Usage Guideline:

A MotorMaster®—Low Ambient Controller or Low-Ambient Pressure Switch must be used when cooling operation is used at outdoor temperatures below 55°F (12.8°C).

Suggested for all commercial applications.

9. Outdoor Air Temperature Sensor

Designed for use with Carrier Thermostats listed in this publication. This device enables the thermostat to display the outdoor temperature. This device also is required to enable special thermostat features such as auxiliary heat lock out.

Usage Guideline:

Suggested for all Carrier thermostats listed in this publication.

10. Sound Hood

Wraparound sound reducing cover for the compressor. Reduces the sound level by about 2 dBA.

Usage Guideline:

Suggested when unit is installed closer than 15 ft to quiet areas—bedrooms, etc.

Suggested when unit is installed between two houses less than 10 ft apart.

11. Support Feet

Four stick-on plastic feet that raise the unit 4 in. above the mounting pad. This allows sand, dirt, and other debris to be flushed from the unit base, minimizing corrosion.

Usage Guideline:

Suggested in the following applications:

Coastal installations.

Windy areas or where debris is normally circulating.

Rooftop installations.

For improved sound ratings.

12. Thermostatic Expansion Valve (TXV)

A modulating flow-control valve which meters refrigerant liquid flow rate into the evaporator in response to the superheat of the refrigerant gas leaving the evaporator. Kit includes valve, adapter tubes, and external equalizer tube. Hard shut off types are available.

Note: When using a hard shut off TXV with single phase reciprocating compressors, a Compressor Start Assist — Capacitor and Relay is required.

Usage Guideline:

Required to achieve ARI ratings in certain equipment combinations. Refer to combination ratings.

Hard shut off TXV or LLS required in air conditioner long line applications.

Required for use on all zoning systems.

13. Time-Delay Relay

An SPST delay relay which briefly continues operation of indoor blower motor to provide additional cooling after the compressor cycles off.

Note: Most indoor unit controls include this feature. For those that do not, use the guideline below.

Usage Guideline:

For improved efficiency ratings for certain combinations of indoor and outdoor units. Refer to ARI Unitary Directory.

Electrical data

UNIT SIZE-SERIES	V/PH	OPER VOLTS*		COMPR		FAN FLA	MCA	60°C MIN WIRE SIZE†	75°C MIN WIRE SIZE†	60°C MAX LENGTH (Ft)‡	75°C MAX LENGTH (Ft)‡	MAX FUSE** CKT BKR AMPS
		Max	Min	LRA	RLA							
024-34	208/230/1	253	187	60.0	12.8	0.8	16.8	14	14	46	44	25
030-33				72.5	14.7	0.8	19.2	14	14	41	39	30
036-33				83.0	15.4	1.1	20.4	12	12	62	59	30
042-33				105.0	18.6	1.1	24.4	10	10	81	77	40
048-31				109.0	20.5	1.1	26.7	10	10	74	70	40
060-30				145.0	26.9	1.4	35.0	8	8	89	84	60

* Permissible limits of the voltage range at which unit will operate satisfactorily.

† If wire is applied at ambient greater than 30°C (86°F), consult Table 310-16 of the NEC (ANSI/NFPA 70). The ampacity of nonmetallic-sheathed cable (NM), trade name ROMEX, shall be that of 60°C (140°F) conductors, per the NEC (ANSI/NFPA 70) Article 336-26. If other than uncoated (non-plated), 60 or 75°C (140 or 167°F) insulation, copper wire (solid wire for 10 AWG and smaller, stranded wire for larger than 10 AWG) is used, consult applicable tables of the NEC (ANSI/NFPA 70).

‡ Length shown is as measured 1 way along wire path between unit and service panel for voltage drop not to exceed 2%.

** Time-delay fuse.

FLA — Full Load Amps
LRA — Locked Rotor Arms
MCA — Minimum Circuit Amps
RLA — Rated Load Amps

NOTE: Control circuit is 24-v on all units and requires external power source. Copper wire must be used from service disconnect to unit. All motors/compressors contain internal overload protection.


A-weighted sound power (dBA)

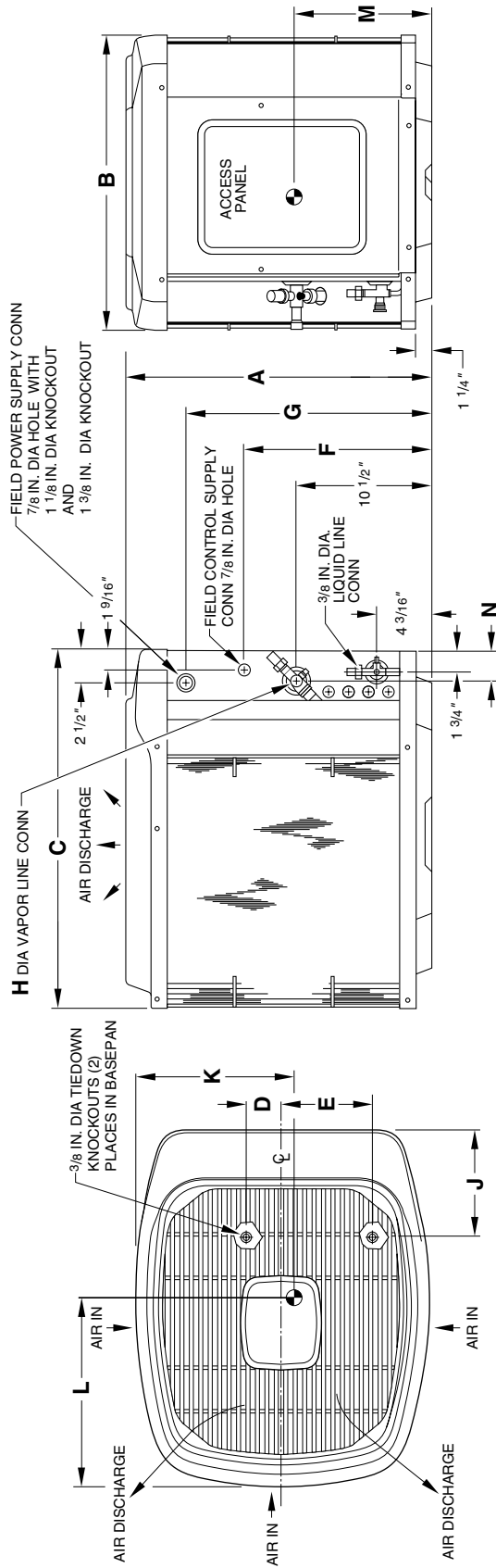
UNIT SIZE-SERIES	STANDARD RATING	TYPICAL OCTAVE BAND SPECTRUM (without tone adjustment)						
		125	250	500	1000	2000	4000	8000
024-34	71	54.5	64.0	64.5	63.5	61.0	56.0	48.0
030-33	70	55.5	60.5	63.0	65.0	63.0	58.0	51.0
036-33	72	56.5	64.0	65.0	67.0	63.0	58.5	50.0
042-33	73	58.5	66.5	66.0	66.5	64.5	59.0	50.5
048-31	76	57.0	66.0	69.0	70.0	66.0	58.0	53.0
060-30	78	56.5	67.0	71.5	70.5	70.5	60.5	53.0

NOTE: Tested in accordance with ARI standard 270.95. (Not listed with ARI.)

Dimensions

NOTES:

1. Allow 30 in. clearance to service side of unit, 48 in. above unit, 6 in. on one side, 12 in. on remaining side, and 24 in. between units for proper airflow.
2. Minimum outdoor operating ambient in cooling mode is 55°F (unless low ambient control is used) max 125°F.
3. Series designation is the 13th position of the unit model number.
4. Center of gravity .



A97084

DIMENSIONS (IN.)

UNIT SIZE	SERIES	UNIT DIMENSIONS													MINIMUM MOUNTING PAD DIMENSIONS
		A	B	C	D	E	F	G	H	J	K	L	M	N	
024	34	33-13/16	30	34-15/16	4	9-3/4	27-1/2	33-7/8	5/8	8-3/16	16-3/4	19-1/2	15-3/4	2-15/16	26 x 32
030	33	39-13/16	30	34-15/16	4	9-3/4	27-1/2	33-7/8	3/4	8-3/16	16-3/4	19-1/2	17-1/4	2-15/16	26 x 32
036	33	39-13/16	30	34-15/16	4	9-3/4	27-1/2	33-7/8	3/4	8-3/16	16-3/4	19-1/2	17-1/4	2-15/16	26 x 32
042	33	39-13/16	30	34-15/16	4	9-3/4	27-1/2	33-7/8	7/8	8-3/16	16-3/4	19-1/2	17-1/4	2-15/16	26 x 32
048	31	39-13/16	30	34-15/16	4	9-3/4	27-1/2	33-7/8	7/8	8-3/16	16-3/4	19-1/2	17-1/4	2-15/16	26 x 32
060	30	39-13/16	38-5/8	45	5-5/16	11-13/16	27-1/2	33-7/8	7/8	8-3/16	19-1/8	26	17-1/4	2-15/16	35 x 41

Combination ratings

UNIT SIZE-SERIES	INDOOR MODEL	Cooling Capacity	Factory Enhance	SEER				EER	
				Standard Rating	Carrier Gas Furnace or Accessory TDR†	Carrier Gas Furnace or Accessory TDR† and Puron TXV‡	Accessory Puron TXV‡		
024-34	*CK5PA036	23,600	TXV	—	14.00	—	—	12.15	
	CC5A/CD5AA024	22,800	NONE	—	—	13.50	—	11.65	
	CC5A/CD5AA030	22,800	NONE	—	—	13.50	—	11.80	
	CC5A/CD5AA036	23,600	NONE	—	—	14.00	—	12.05	
	CC5A/CD5AW024	22,800	NONE	—	—	13.50	—	11.65	
	CC5A/CD5AW030	23,000	NONE	—	—	13.50	—	11.80	
	CC5A/CD5AW036	23,600	NONE	—	—	14.00	—	12.05	
	CE3AA024	22,800	NONE	—	—	13.50	—	11.80	
	CE3AA030	23,000	NONE	—	—	13.50	—	11.90	
	CE3AA036	23,400	NONE	—	—	14.00	—	11.95	
	CF5AA024	22,800	NONE	—	—	13.50	—	11.65	
	CF5AA036	23,400	NONE	—	—	14.00	—	12.05	
	CK3BA024	22,800	NONE	—	—	13.50	—	11.85	
	CK3BA030	23,000	NONE	—	—	13.50	—	11.90	
	CK3BA036	23,600	NONE	—	—	14.00	—	12.15	
	CK5A/CK5BA024	22,800	NONE	—	—	13.50	—	11.85	
	CK5A/CK5BA030	23,000	NONE	—	—	13.50	—	11.90	
	CK5A/CK5BA036	23,600	NONE	—	—	14.00	—	12.15	
	CK5A/CK5BT036	23,600	NONE	—	—	14.00	—	12.15	
	CK5A/CK5BW024	22,800	NONE	—	—	13.50	—	11.85	
	CK5A/CK5BW030	23,000	NONE	—	—	13.50	—	11.90	
	CK5A/CK5BW036	23,600	NONE	—	—	14.00	—	12.15	
	CK5PA024	22,800	TXV	—	13.50	—	—	11.85	
	CK5PA030	23,000	TXV	—	13.50	—	—	11.90	
	CK5PT036	23,600	TXV	—	14.00	—	—	12.15	
	CK5PW024	22,800	TXV	—	13.50	—	—	11.85	
	CK5PW030	23,000	TXV	—	13.50	—	—	11.90	
	CK5PW036	23,600	TXV	—	14.00	—	—	12.15	
	F(A,B)4BN(F,C)024	23,000	TDR	—	—	—	13.50	11.90	
	F(A,B)4BN(F,C)030	23,400	TDR	—	—	—	14.00	12.10	
	F(A,B)4BN(F,C)036	23,400	TDR	—	—	—	13.50	11.60	
	FC4CNF024	23,000	TDR&TXV	13.50	—	—	—	11.90	
	FC4CNF030	23,400	TDR&TXV	14.00	—	—	—	12.10	
	FC4CNF036	23,400	TDR&TXV	13.50	—	—	—	11.60	
	FE4ANF002	23,800	TDR&TXV	15.50	—	—	—	13.45	
	FE4ANF003	24,000	TDR&TXV	15.50	—	—	—	13.65	
	FF1DNA024	23,000	TDR	—	—	—	13.50	11.95	
	FF1DNA030	23,400	TDR	—	—	—	13.50	11.75	
	FF1DNE024	23,000	TDR&TXV	13.50	—	—	—	11.95	
	FF1DNE030	23,400	TDR&TXV	13.50	—	—	—	11.75	
	FG3AAA024	22,400	NONE	—	—	13.50	—	11.50	
	FG3AAA036	23,000	NONE	—	—	13.50	—	11.85	
	FK4DNF001	23,600	TDR&TXV	15.00	—	—	—	13.30	
	FK4DNF002	23,800	TDR&TXV	15.50	—	—	—	13.45	
	FK4DNF003	24,000	TDR&TXV	15.50	—	—	—	13.65	
	FV4BNF002	23,800	TDR&TXV	15.50	—	—	—	13.45	
	FV4BNF003	24,000	TDR&TXV	15.50	—	—	—	13.65	
	FX4BNF030	23,400	TDR&TXV	14.00	—	—	—	12.20	
	FX4BNF036	23,400	TDR&TXV	14.00	—	—	—	12.15	
	COILS + 58CV(A,X)070-12 VARIABLE-SPEED FURNACE								
		CC5A/CD5AA024	22,800	TDR	—	—	—	14.50	12.65
		CC5A/CD5AA030	23,000	TDR	—	—	—	14.50	12.90
		CC5A/CD5AA036	23,600	TDR	—	—	—	15.00	13.20
		CC5A/CD5AW024	22,800	TDR	—	—	—	14.50	12.75
		CC5A/CD5AW030	23,000	TDR	—	—	—	14.50	12.90
		CE3AA024	22,800	TDR	—	—	—	14.50	12.80
		CE3AA030	23,000	TDR	—	—	—	14.50	13.00
		CE3AA036	23,600	TDR	—	—	—	15.00	13.05
		CK3BA024	22,800	TDR	—	—	—	14.50	13.05
		CK3BA030	23,000	TDR	—	—	—	14.50	13.10
	CK3BA036	23,600	TDR	—	—	—	15.00	13.25	
	CK5A/CK5BA024	22,800	TDR	—	—	—	14.50	12.90	
	CK5A/CK5BA030	23,000	TDR	—	—	—	14.50	13.00	
	CK5A/CK5BA036	23,600	TDR	—	—	—	15.00	13.25	
	CK5A/CK5BT036	23,600	TDR	—	—	—	15.00	13.25	
	CK5A/CK5BW024	22,800	TDR	—	—	—	14.50	12.90	
	CK5A/CK5BW030	23,000	TDR	—	—	—	14.50	13.05	
	CK5PA024	22,800	TDR&TXV	14.50	—	—	—	12.90	
	CK5PA030	23,000	TDR&TXV	14.50	—	—	—	13.00	
	CK5PA036	23,600	TDR&TXV	15.00	—	—	—	13.25	
	CK5PT036	23,600	TDR&TXV	15.00	—	—	—	13.25	
	CK5PW024	22,800	TDR&TXV	14.50	—	—	—	12.90	
	CK5PW030	23,000	TDR&TXV	14.50	—	—	—	13.05	
COILS + 58CV(A,X)090-16 VARIABLE-SPEED FURNACE									
	CC5A/CD5AA024	22,800	TDR	—	—	—	14.50	12.80	
	CC5A/CD5AA030	23,000	TDR	—	—	—	14.50	13.05	
	CC5A/CD5AA036	23,600	TDR	—	—	—	15.00	13.30	
	CC5A/CD5AW024	22,800	TDR	—	—	—	14.50	12.90	
	CC5A/CD5AW030	23,000	TDR	—	—	—	14.50	13.05	
	CC5A/CD5AW036	23,600	TDR	—	—	—	15.00	13.35	
	CE3AA024	22,800	TDR	—	—	—	14.50	12.90	
	CE3AA030	23,000	TDR	—	—	—	14.50	13.15	
	CE3AA036	23,600	TDR	—	—	—	15.00	13.20	

See notes on pg. 23.

Combination ratings continued

UNIT SIZE-SERIES	INDOOR MODEL	Cooling Capacity	Factory Enhance	SEER				EER
				Standard Rating	Carrier Gas Furnace or Accessory TDR†	Carrier Gas Furnace or Accessory TDR† and Puron TXV‡	Accessory Puron TXV‡	
024-34	CK3BA024	22,800	TDR	—	—	—	14.50	13.20
	CK3BA030	23,000	TDR	—	—	—	14.50	13.25
	CK3BA036	23,600	TDR	—	—	—	15.00	13.40
	CK5A/CK5BA024	22,800	TDR	—	—	—	14.50	13.05
	CK5A/CK5BA030	23,000	TDR	—	—	—	14.50	13.15
	CK5A/CK5BA036	23,600	TDR	—	—	—	15.00	13.40
	CK5A/CK5BT036	23,600	TDR	—	—	—	15.00	13.40
	CK5A/CK5BW024	22,800	TDR	—	—	—	14.50	13.05
	CK5A/CK5BW030	23,000	TDR	—	—	—	14.50	13.20
	CK5A/CK5BW036	23,600	TDR	—	—	—	15.00	13.40
	CK5PA024	22,800	TDR&TXV	14.50	—	—	—	13.05
	CK5PA030	23,000	TDR&TXV	14.50	—	—	—	13.15
	CK5PA036	23,600	TDR&TXV	15.00	—	—	—	13.40
	CK5PT036	23,600	TDR&TXV	15.00	—	—	—	13.40
	CK5PW024	22,800	TDR&TXV	14.50	—	—	—	13.05
	CK5PW030	23,000	TDR&TXV	14.50	—	—	—	13.20
	CK5PW036	23,600	TDR&TXV	15.00	—	—	—	13.40
	COILS + 58CV(A,X)110-20 VARIABLE-SPEED FURNACE							
	CC5A/CD5AA036	23,600	TDR	—	—	—	15.00	13.25
	CC5A/CD5AW024	22,800	TDR	—	—	—	14.50	12.80
	CC5A/CD5AW030	23,000	TDR	—	—	—	14.50	13.00
	CC5A/CD5AW036	23,600	TDR	—	—	—	15.00	13.30
	CE3AA024	22,800	TDR	—	—	—	14.50	12.75
	CE3AA030	23,000	TDR	—	—	—	14.50	13.05
	CE3AA036	23,600	TDR	—	—	—	15.00	13.10
	CK3BA024	22,800	TDR	—	—	—	14.50	13.15
	CK3BA030	23,000	TDR	—	—	—	14.50	13.20
	CK3BA036	23,600	TDR	—	—	—	15.00	13.30
	CK5A/CK5BA036	23,600	TDR	—	—	—	15.00	13.30
	CK5A/CK5BT036	23,600	TDR	—	—	—	15.00	13.30
	CK5A/CK5BW024	22,800	TDR	—	—	—	14.50	12.95
	CK5A/CK5BW030	23,000	TDR	—	—	—	14.50	13.10
	CK5A/CK5BW036	23,600	TDR	—	—	—	15.00	13.35
	CK5PA036	23,600	TDR&TXV	15.00	—	—	—	13.30
	CK5PT036	23,600	TDR&TXV	15.00	—	—	—	13.30
	CK5PW024	22,800	TDR&TXV	14.50	—	—	—	12.95
	CK5PW030	23,000	TDR&TXV	14.50	—	—	—	13.10
	CK5PW036	23,600	TDR&TXV	15.00	—	—	—	13.35
COILS + 58CV(A,X)135-22 VARIABLE-SPEED FURNACE								
	CC5A/CD5AW036	23,600	TDR	—	—	—	15.00	13.30
	CE3AA024	22,800	TDR	—	—	—	14.50	12.80
	CE3AA030	23,000	TDR	—	—	—	14.50	13.10
	CE3AA036	23,600	TDR	—	—	—	15.00	13.15
	CK5A/CK5BW036	23,600	TDR	—	—	—	15.00	13.35
	CK5PW036	23,600	TDR&TXV	15.00	—	—	—	13.35
COILS + 58CV(A,X)155-22 VARIABLE-SPEED FURNACE								
	CC5A/CD5AW036	23,600	TDR	—	—	—	15.00	13.35
	CE3AA024	22,800	TDR	—	—	—	14.50	12.85
	CE3AA030	23,000	TDR	—	—	—	14.50	13.10
	CE3AA036	23,600	TDR	—	—	—	15.00	13.15
	CK5A/CK5BW036	23,600	TDR	—	—	—	15.00	13.40
	CK5PW036	23,600	TDR&TXV	15.00	—	—	—	13.40
COILS + 58MVP040-14 VARIABLE-SPEED FURNACE								
	CC5A/CD5AW036	23,600	TDR	—	—	—	15.00	13.25
	CE3AA024	22,800	TDR	—	—	—	14.50	12.75
	CE3AA030	23,000	TDR	—	—	—	14.50	13.00
	CE3AA036	23,600	TDR	—	—	—	15.00	13.05
	CK5A/CK5BW036	23,600	TDR	—	—	—	15.00	13.30
	CK5PW036	23,600	TDR&TXV	15.00	—	—	—	13.30
COILS + 58MVP060-14 VARIABLE-SPEED FURNACE								
	CC5A/CD5AA024	22,800	TDR	—	—	—	14.50	12.70
	CC5A/CD5AA030	23,000	TDR	—	—	—	14.50	12.95
	CC5A/CD5AA036	23,600	TDR	—	—	—	15.00	13.25
	CC5A/CD5AW024	22,800	TDR	—	—	—	14.50	12.80
	CC5A/CD5AW030	23,000	TDR	—	—	—	14.50	12.95
	CC5A/CD5AW036	23,600	TDR	—	—	—	15.00	13.25
	CE3AA024	22,800	TDR	—	—	—	14.50	12.80
	CE3AA030	23,000	TDR	—	—	—	14.50	13.05
	CE3AA036	23,600	TDR	—	—	—	15.00	13.10
	CK3BA024	22,800	TDR	—	—	—	14.50	13.10
	CK3BA030	23,000	TDR	—	—	—	14.50	13.15
	CK3BA036	23,600	TDR	—	—	—	15.00	13.30
	CK5A/CK5BA024	22,800	TDR	—	—	—	14.50	12.95
	CK5A/CK5BA030	23,000	TDR	—	—	—	14.50	13.05
	CK5A/CK5BA036	23,600	TDR	—	—	—	15.00	13.30
	CK5A/CK5BT036	23,600	TDR	—	—	—	15.00	13.30
	CK5A/CK5BW024	22,800	TDR	—	—	—	14.50	12.95
	CK5A/CK5BW030	23,000	TDR	—	—	—	14.50	13.10
	CK5A/CK5BW036	23,600	TDR	—	—	—	15.00	13.35
	CK5PA024	22,800	TDR&TXV	14.50	—	—	—	12.95

See notes on pg. 23.

Combination ratings continued

UNIT SIZE-SERIES	INDOOR MODEL	Cooling Capacity	Factory Enhance	SEER				EER	
				Standard Rating	Carrier Gas Furnace or Accessory TDR†	Carrier Gas Furnace or Accessory TDR† and Puron TXV‡	Accessory Puron TXV‡		
024-34	CK5PA030	23,000	TDR&TXV	14.50	—	—	—	13.05	
	CK5PA036	23,600	TDR&TXV	15.00	—	—	—	13.30	
	CK5PT036	23,600	TDR&TXV	15.00	—	—	—	13.30	
	CK5PW024	22,800	TDR&TXV	14.50	—	—	—	12.95	
	CK5PW030	23,000	TDR&TXV	14.50	—	—	—	13.10	
	CK5PW036	23,600	TDR&TXV	15.00	—	—	—	13.35	
	COILS + 58MVP080-14 VARIABLE-SPEED FURNACE								
	CC5A/CD5AA036	23,600	TDR	—	—	—	15.00	13.20	
	CC5A/CD5AW024	22,800	TDR	—	—	—	14.50	12.75	
	CC5A/CD5AW030	23,000	TDR	—	—	—	14.50	12.95	
	CC5A/CD5AW036	23,600	TDR	—	—	—	15.00	13.25	
	CE3AA024	22,800	TDR	—	—	—	14.50	12.75	
	CE3AA030	23,000	TDR	—	—	—	14.50	13.00	
	CE3AA036	23,600	TDR	—	—	—	15.00	13.10	
	CK3BA024	22,800	TDR	—	—	—	14.50	13.10	
	CK3BA030	23,000	TDR	—	—	—	14.50	13.15	
	CK3BA036	23,600	TDR	—	—	—	15.00	13.25	
	CK5A/CK5BA036	23,600	TDR	—	—	—	15.00	13.25	
	CK5A/CK5BT036	23,600	TDR	—	—	—	15.00	13.25	
CK5A/CK5BW024	22,800	TDR	—	—	—	14.50	12.95		
CK5A/CK5BW030	23,000	TDR	—	—	—	14.50	13.05		
CK5A/CK5BW036	23,600	TDR	—	—	—	15.00	13.30		
CK5PA036	23,600	TDR&TXV	15.00	—	—	—	13.25		
CK5PT036	23,600	TDR&TXV	15.00	—	—	—	13.25		
CK5PW024	22,800	TDR&TXV	14.50	—	—	—	12.90		
CK5PW030	23,000	TDR&TXV	14.50	—	—	—	13.05		
CK5PW036	23,600	TDR&TXV	15.00	—	—	—	13.30		
COILS + 58MVP080-20 VARIABLE-SPEED FURNACE									
CC5A/CD5AA036	23,600	TDR	—	—	—	15.00	13.20		
CC5A/CD5AW024	22,800	TDR	—	—	—	14.50	12.80		
CC5A/CD5AW030	23,000	TDR	—	—	—	14.50	12.95		
CC5A/CD5AW036	23,600	TDR	—	—	—	15.00	13.25		
CE3AA024	22,800	TDR	—	—	—	14.50	12.80		
CE3AA030	23,000	TDR	—	—	—	14.50	13.05		
CE3AA036	23,600	TDR	—	—	—	15.00	13.10		
CK3BA024	22,800	TDR	—	—	—	14.50	13.10		
CK3BA030	23,000	TDR	—	—	—	14.50	13.15		
CK3BA036	23,600	TDR	—	—	—	15.00	13.30		
CK5A/CK5BA036	23,600	TDR	—	—	—	15.00	13.30		
CK5A/CK5BT036	23,600	TDR	—	—	—	15.00	13.30		
CK5A/CK5BW024	22,800	TDR	—	—	—	14.50	12.95		
CK5A/CK5BW030	23,000	TDR	—	—	—	14.50	13.10		
CK5A/CK5BW036	23,600	TDR	—	—	—	15.00	13.30		
CK5PA036	23,600	TDR&TXV	15.00	—	—	—	13.30		
CK5PT036	23,600	TDR&TXV	15.00	—	—	—	13.30		
CK5PW024	22,800	TDR&TXV	14.50	—	—	—	12.95		
CK5PW030	23,000	TDR&TXV	14.50	—	—	—	13.10		
CK5PW036	23,600	TDR&TXV	15.00	—	—	—	13.30		
COILS + 58MVP100-20 VARIABLE-SPEED FURNACE									
CC5A/CD5AA036	23,600	TDR	—	—	—	15.00	13.25		
CC5A/CD5AW024	22,800	TDR	—	—	—	14.50	12.80		
CC5A/CD5AW030	23,000	TDR	—	—	—	14.50	13.00		
CC5A/CD5AW036	23,600	TDR	—	—	—	15.00	13.30		
CE3AA024	22,800	TDR	—	—	—	14.50	12.80		
CE3AA030	23,000	TDR	—	—	—	14.50	13.05		
CE3AA036	23,600	TDR	—	—	—	15.00	13.15		
CK3BA024	22,800	TDR	—	—	—	14.50	13.15		
CK3BA030	23,000	TDR	—	—	—	14.50	13.20		
CK3BA036	23,600	TDR	—	—	—	15.00	13.30		
CK5A/CK5BA036	23,600	TDR	—	—	—	15.00	13.30		
CK5A/CK5BT036	23,600	TDR	—	—	—	15.00	13.30		
CK5A/CK5BW024	22,800	TDR	—	—	—	14.50	12.95		
CK5A/CK5BW030	23,000	TDR	—	—	—	14.50	13.10		
CK5A/CK5BW036	23,600	TDR	—	—	—	15.00	13.35		
CK5PA036	23,600	TDR&TXV	15.00	—	—	—	13.30		
CK5PT036	23,600	TDR&TXV	15.00	—	—	—	13.30		
CK5PW024	22,800	TDR&TXV	14.50	—	—	—	12.95		
CK5PW030	23,000	TDR&TXV	14.50	—	—	—	13.10		
CK5PW036	23,600	TDR&TXV	15.00	—	—	—	13.35		
COILS + 58MVP120-20 VARIABLE-SPEED FURNACE									
CC5A/CD5AW036	23,600	TDR	—	—	—	15.00	13.20		
CE3AA024	22,800	TDR	—	—	—	14.50	12.75		
CE3AA030	23,000	TDR	—	—	—	14.50	13.00		
CE3AA036	23,600	TDR	—	—	—	15.00	13.05		
CK5A/CK5BW036	23,600	TDR	—	—	—	15.00	13.30		
CK5PW036	23,600	TDR&TXV	15.00	—	—	—	13.30		
030-33	*CK5PA042	30,000	TXV	—	14.00	—	—	12.10	
	CC5A/CD5AA030	29,000	NONE	—	—	13.50	—	11.70	
	CC5A/CD5AA036	29,600	NONE	—	—	13.80	—	12.05	
	CC5A/CD5AA042	30,000	NONE	—	—	13.70	—	12.05	
	CC5A/CD5AW030	29,000	NONE	—	—	13.50	—	11.70	
	CC5A/CD5AW036	29,600	NONE	—	—	13.80	—	12.05	

See notes on pg. 23.

Combination ratings continued

UNIT SIZE-SERIES	INDOOR MODEL	Cooling Capacity	Factory Enhance	SEER				EER	
				Standard Rating	Carrier Gas Furnace or Accessory TDR†	Carrier Gas Furnace or Accessory TDR† and Puron TXV‡	Accessory Puron TXV‡		
030-33	CC5A/CD5AW042	30,000	NONE	—	—	13.70	—	12.00	
	CE3AA030	29,000	NONE	—	—	13.50	—	11.85	
	CE3AA036	29,600	NONE	—	—	13.50	—	11.95	
	CE3AA042	30,000	NONE	—	—	14.00	—	12.10	
	CF5AA036	29,600	NONE	—	—	13.50	—	12.00	
	CK3BA030	29,000	NONE	—	—	13.50	—	11.75	
	CK3BA036	29,600	NONE	—	—	13.80	—	12.10	
	CK3BA042	30,000	NONE	—	—	14.00	—	12.10	
	CK5A/CK5BA030	29,000	NONE	—	—	13.50	—	11.75	
	CK5A/CK5BA036	29,600	NONE	—	—	13.80	—	12.10	
	CK5A/CK5BA042	30,000	NONE	—	—	14.00	—	12.10	
	CK5A/CK5BT036	29,600	NONE	—	—	13.80	—	12.10	
	CK5A/CK5BT042	30,000	NONE	—	—	14.00	—	12.10	
	CK5A/CK5BW030	29,000	NONE	—	—	13.50	—	11.75	
	CK5A/CK5BW036	29,600	NONE	—	—	13.80	—	12.10	
	CK5PA030	29,000	TXV	—	—	13.50	—	11.75	
	CK5PA036	29,600	TXV	—	—	13.80	—	12.10	
	CK5PT036	29,600	TXV	—	—	13.80	—	12.10	
	CK5PT042	30,000	TXV	—	—	14.00	—	12.10	
	CK5PW030	29,000	TXV	—	—	13.50	—	11.75	
	CK5PW036	29,600	TXV	—	—	13.80	—	12.10	
	F(A,B)4AN(F,B,C)042	30,000	TDR	—	—	—	13.50	11.70	
	F(A,B)4AN(F,C)030	29,000	TDR	—	—	—	14.00	12.00	
	F(A,B)4AN(F,C)036	29,600	TDR	—	—	—	13.50	11.75	
	F(A,B)4BN(F,B,C)042	30,000	TDR	—	—	—	13.50	11.70	
	F(A,B)4BN(F,C)030	29,000	TDR	—	—	—	14.00	12.00	
	F(A,B)4BN(F,C)036	29,600	TDR	—	—	—	13.50	11.75	
	FC4BN(F,B)042	30,000	TDR&TXV	13.50	—	—	—	11.70	
	FC4BNF030	29,000	TDR&TXV	14.00	—	—	—	12.00	
	FC4BNF036	29,600	TDR&TXV	13.50	—	—	—	11.75	
	FC4CN(F,B)042	30,000	TDR&TXV	13.50	—	—	—	11.70	
	FC4CNF030	29,000	TDR&TXV	14.00	—	—	—	12.00	
	FC4CNF036	29,600	TDR&TXV	13.50	—	—	—	11.75	
	FE4ANF002	29,600	TDR&TXV	15.20	—	—	—	13.15	
	FE4ANF003	29,800	TDR&TXV	15.60	—	—	—	13.60	
	FE4ANF005	30,000	TDR&TXV	15.75	—	—	—	14.00	
	FF1DNA030	29,000	TDR	—	—	—	13.50	11.90	
	FG3AAA036	29,600	NONE	—	—	13.50	—	11.85	
	FK4CNF001	29,000	TDR&TXV	15.00	—	—	—	13.05	
	FK4CNF002	29,600	TDR&TXV	15.00	—	—	—	13.15	
	FK4CNF003	29,800	TDR&TXV	15.50	—	—	—	12.60	
	FK4CNF005	30,000	TDR&TXV	15.75	—	—	—	14.00	
	FK4DNF001	29,000	TDR&TXV	15.00	—	—	—	13.05	
	FK4DNF002	29,600	TDR&TXV	15.00	—	—	—	13.15	
	FK4DNF003	29,800	TDR&TXV	15.50	—	—	—	12.60	
	FK4DNF005	30,000	TDR&TXV	15.75	—	—	—	14.00	
	FV4ANF002	29,600	TDR&TXV	15.20	—	—	—	13.15	
	FV4ANF003	29,800	TDR&TXV	15.60	—	—	—	13.60	
	FV4ANF005	30,000	TDR&TXV	15.75	—	—	—	14.00	
	FV4BNF002	29,600	TDR&TXV	15.20	—	—	—	13.15	
	FV4BNF003	29,800	TDR&TXV	15.60	—	—	—	13.60	
	FV4BNF005	30,000	TDR&TXV	15.75	—	—	—	14.00	
	FX4ANF030	29,000	TDR&TXV	14.00	—	—	—	12.15	
	FX4ANF036	29,600	TDR&TXV	13.85	—	—	—	11.90	
	FX4ANF042	30,000	TDR&TXV	13.60	—	—	—	11.90	
	FX4BNF030	29,000	TDR&TXV	14.00	—	—	—	12.15	
	FX4BNF036	29,600	TDR&TXV	13.85	—	—	—	11.90	
	FX4BNF042	30,000	TDR&TXV	13.60	—	—	—	11.90	
	COILS + 58CV(A,X)070-12 VARIABLE-SPEED FURNACE								
	CC5A/CD5AA030	29,000	TDR	—	—	—	14.50	12.65	
	CC5A/CD5AA036	29,600	TDR	—	—	—	15.00	13.05	
	CC5A/CD5AW030	29,000	TDR	—	—	—	14.50	12.65	
	CE3AA030	29,000	TDR	—	—	—	14.50	12.75	
	CE3AA036	29,600	TDR	—	—	—	15.00	12.85	
	CK3BA030	29,000	TDR	—	—	—	14.50	12.70	
	CK3BA036	29,600	TDR	—	—	—	15.00	13.10	
	CK5A/CK5BA030	29,000	TDR	—	—	—	14.50	12.70	
	CK5A/CK5BA036	29,600	TDR	—	—	—	15.00	13.10	
CK5A/CK5BT036	29,600	TDR	—	—	—	15.00	13.10		
CK5A/CK5BW030	29,000	TDR	—	—	—	14.50	12.70		
CK5PA030	29,000	TDR&TXV	14.50	—	—	—	12.70		
CK5PA036	29,600	TDR&TXV	15.00	—	—	—	13.10		
CK5PT036	29,600	TDR&TXV	15.00	—	—	—	13.10		
CK5PW030	29,000	TDR&TXV	14.50	—	—	—	12.70		
COILS + 58CV(A,X)090-16 VARIABLE-SPEED FURNACE									
CC5A/CD5AA030	29,000	TDR	—	—	—	14.50	12.80		
CC5A/CD5AA036	29,600	TDR	—	—	—	15.00	13.25		
CC5A/CD5AA042	30,000	TDR	—	—	—	15.00	13.30		
CC5A/CD5AW030	29,000	TDR	—	—	—	14.50	12.80		
CC5A/CD5AW036	29,600	TDR	—	—	—	15.00	13.25		
CE3AA030	29,000	TDR	—	—	—	14.50	12.95		
CE3AA036	29,600	TDR	—	—	—	15.00	13.15		

See notes on pg. 23.

Combination ratings continued

UNIT SIZE-SERIES	INDOOR MODEL	Cooling Capacity	Factory Enhance	SEER				EER	
				Standard Rating	Carrier Gas Furnace or Accessory TDR†	Carrier Gas Furnace or Accessory TDR† and Puron TXV‡	Accessory Puron TXV‡		
030-33	CE3AA042	30,000	TDR	—	—	—	15.00	13.30	
	CK3BA030	29,000	TDR	—	—	—	14.50	12.85	
	CK3BA036	29,600	TDR	—	—	—	15.00	13.30	
	CK3BA042	30,000	TDR	—	—	—	15.00	13.30	
	CK5A/CK5BA030	29,000	TDR	—	—	—	14.50	12.85	
	CK5A/CK5BA036	29,600	TDR	—	—	—	15.00	13.30	
	CK5A/CK5BA042	30,000	TDR	—	—	—	15.00	13.30	
	CK5A/CK5BT042	30,000	TDR	—	—	—	15.00	13.30	
	CK5A/CK5BW030	29,000	TDR	—	—	—	14.50	12.85	
	CK5A/CK5BW036	29,600	TDR	—	—	—	15.00	13.30	
	CK5PA030	29,000	TDR&TXV	15.00	—	—	—	12.85	
	CK5PA036	29,600	TDR&TXV	15.00	—	—	—	13.30	
	CK5PA042	30,000	TDR&TXV	15.00	—	—	—	13.30	
	CK5PT036	29,600	TDR&TXV	15.00	—	—	—	13.30	
	CK5PT042	30,000	TDR&TXV	15.00	—	—	—	13.30	
	CK5PW030	29,000	TDR&TXV	15.00	—	—	—	12.85	
	CK5PW036	29,600	TDR&TXV	15.00	—	—	—	13.30	
	COILS + 58CV(A,X)110-20 VARIABLE-SPEED FURNACE								
		CC5A/CD5AA036	29,600	TDR	—	—	—	15.00	13.45
		CC5A/CD5AA042	30,000	TDR	—	—	—	15.00	13.50
	CC5A/CD5AW030	29,000	TDR	—	—	—	14.50	13.05	
	CC5A/CD5AW036	29,600	TDR	—	—	—	15.00	13.50	
	CC5A/CD5AW042	30,000	TDR	—	—	—	15.00	13.40	
	CE3AA030	29,000	TDR	—	—	—	14.50	13.10	
	CE3AA036	29,600	TDR	—	—	—	15.00	13.30	
	CE3AA042	30,000	TDR	—	—	—	15.00	13.55	
	CK3BA030	29,000	TDR	—	—	—	14.50	13.25	
	CK3BA036	29,600	TDR	—	—	—	15.00	13.50	
	CK3BA042	30,000	TDR	—	—	—	15.00	13.55	
	CK5A/CK5BA036	29,600	TDR	—	—	—	15.00	13.50	
	CK5A/CK5BA042	30,000	TDR	—	—	—	15.00	13.55	
	CK5A/CK5BE042	30,000	TDR	—	—	—	15.00	13.20	
	CK5A/CK5BT036	29,600	TDR	—	—	—	15.00	13.50	
	CK5A/CK5BT042	30,000	TDR	—	—	—	15.00	13.55	
	CK5A/CK5BW030	29,000	TDR	—	—	—	14.50	13.15	
	CK5A/CK5BW036	29,600	TDR	—	—	—	15.00	13.55	
	CK5PA036	29,600	TDR&TXV	15.00	—	—	—	13.50	
	CK5PA042	30,000	TDR&TXV	15.00	—	—	—	13.55	
	CK5PE042	30,000	TDR&TXV	15.00	—	—	—	13.60	
	CK5PT036	29,600	TDR&TXV	15.00	—	—	—	13.50	
	CK5PT042	30,000	TDR&TXV	15.00	—	—	—	13.55	
	CK5PW030	29,000	TDR&TXV	14.50	—	—	—	13.15	
	CK5PW036	29,600	TDR&TXV	15.00	—	—	—	13.55	
COILS + 58CV(A,X)135-22 VARIABLE-SPEED FURNACE									
	CC5A/CD5AW036	29,600	TDR	—	—	—	15.00	13.65	
	CE3AA030	29,000	TDR	—	—	—	15.00	13.25	
	CE3AA036	29,600	TDR	—	—	—	15.00	13.45	
	CK5A/CK5BW036	29,600	TDR	—	—	—	15.00	13.70	
	CK5PW036	29,600	TDR&TXV	15.00	—	—	—	13.70	
COILS + 58CV(A,X)155-22 VARIABLE-SPEED FURNACE									
	CC5A/CD5AW036	29,600	TDR	—	—	—	15.00	13.70	
	CE3AA030	29,000	TDR	—	—	—	14.00	15.45	
	CE3AA036	29,600	TDR	—	—	—	15.00	13.50	
	CK5A/CK5BW036	29,600	TDR	—	—	—	15.00	13.75	
	CK5PW036	29,600	TDR&TXV	14.50	—	—	—	16.00	
COILS + 58MVP040-14 VARIABLE-SPEED FURNACE									
	CC5A/CD5AA042	30,000	TDR	—	—	—	15.00	13.00	
	CC5A/CD5AW030	29,000	TDR	—	—	—	14.00	12.30	
	CC5A/CD5AW036	29,600	TDR	—	—	—	15.00	12.90	
	CK5A/CK5BA042	30,000	TDR	—	—	—	15.00	13.05	
	CK5A/CK5BW030	29,000	TDR	—	—	—	14.00	12.35	
	CK5A/CK5BW036	29,600	TDR	—	—	—	15.00	12.90	
	CK5PA042	30,000	TDR&TXV	15.00	—	—	—	13.05	
	CK5PW030	29,000	TDR&TXV	14.00	—	—	—	12.35	
	CK5PW036	29,600	TDR&TXV	15.00	—	—	—	12.90	
COILS + 58MVP060-14 VARIABLE-SPEED FURNACE									
	CC5A/CD5AA036	29,600	TDR	—	—	—	14.70	12.85	
	CC5A/CD5AW030	29,000	TDR	—	—	—	14.00	12.30	
	CK3BA030	29,000	TDR	—	—	—	14.50	12.40	
	CK3BA036	29,600	TDR	—	—	—	15.00	12.90	
	CK3BA042	30,000	TDR	—	—	—	15.00	13.00	
	CK5A/CK5BA036	29,600	TDR	—	—	—	14.70	12.90	
	CK5A/CK5BW030	29,000	TDR	—	—	—	14.00	12.40	
	CK5PA036	29,600	TDR&TXV	14.70	—	—	—	12.90	
	CK5PW030	29,000	TDR&TXV	14.00	—	—	—	12.40	
COILS + 58MVP080-14 VARIABLE-SPEED FURNACE									
	CC5A/CD5AA042	30,000	TDR	—	—	—	15.00	13.10	
	CC5A/CD5AW030	29,000	TDR	—	—	—	14.50	12.40	

See notes on pg. 23.

Combination ratings continued

UNIT SIZE-SERIES	INDOOR MODEL	Cooling Capacity	Factory Enhance	SEER				EER	
				Standard Rating	Carrier Gas Furnace or Accessory TDR†	Carrier Gas Furnace or Accessory TDR† and Puron TXV‡	Accessory Puron TXV‡		
030-33	CC5A/CD5AW036	29,600	TDR	—	—	—	15.00	13.00	
	CK5A/CK5BA042	30,000	TDR	—	—	—	15.00	13.15	
	CK5A/CK5BW030	29,000	TDR	—	—	—	14.50	12.50	
	CK5A/CK5BW036	29,600	TDR	—	—	—	15.00	13.05	
	CK5PA042	30,000	TDR&TXV	15.00	—	—	—	13.15	
	CK5PW030	29,000	TDR&TXV	14.50	—	—	—	12.50	
	CK5PW036	29,600	TDR&TXV	15.00	—	—	—	13.05	
	COILS + 58MVP080-20 VARIABLE-SPEED FURNACE								
	CC5A/CD5AA042	30,000	TDR	—	—	—	15.00	12.95	
	CC5A/CD5AW030	29,000	TDR	—	—	—	14.30	12.25	
	CC5A/CD5AW036	29,600	TDR	—	—	—	14.70	12.85	
	CK3BA042	30,000	TDR	—	—	—	15.00	13.00	
	CK5A/CK5BA042	30,000	TDR	—	—	—	15.00	13.00	
	CK5A/CK5BW030	29,000	TDR	—	—	—	14.30	12.30	
	CK5A/CK5BW036	29,600	TDR	—	—	—	14.70	12.85	
	CK5PA042	30,000	TDR&TXV	15.00	—	—	—	13.00	
	CK5PW030	29,000	TDR&TXV	14.30	—	—	—	12.30	
	CK5PW036	29,600	TDR&TXV	14.70	—	—	—	12.85	
	COILS + 58MVP100-20 VARIABLE-SPEED FURNACE								
	CC5A/CD5AA042	30,000	TDR	—	—	—	15.00	13.35	
	CC5A/CD5AW030	29,000	TDR	—	—	—	14.70	12.75	
	CC5A/CD5AW036	29,600	TDR	—	—	—	15.00	13.30	
	CK3BA042	30,000	TDR	—	—	—	15.00	13.40	
	CK5A/CK5BA042	30,000	TDR	—	—	—	15.00	13.40	
	CK5A/CK5BW030	29,000	TDR	—	—	—	14.70	12.80	
	CK5A/CK5BW036	29,600	TDR	—	—	—	15.00	13.30	
	CK5PA042	30,000	TDR&TXV	15.00	—	—	—	13.40	
	CK5PW030	29,000	TDR&TXV	14.70	—	—	—	12.80	
	CK5PW036	29,600	TDR&TXV	15.00	—	—	—	13.30	
	COILS + 58MVP120-20 VARIABLE-SPEED FURNACE								
	CC5A/CD5AA042	30,000	TDR	—	—	—	15.00	13.30	
	CC5A/CD5AW036	29,600	TDR	—	—	—	15.00	13.20	
	CK5A/CK5BA042	30,000	TDR	—	—	—	15.00	13.35	
	CK5A/CK5BW036	29,600	TDR	—	—	—	15.00	13.25	
	CK5PA042	30,000	TDR&TXV	15.00	—	—	—	13.35	
	CK5PW036	29,600	TDR&TXV	15.00	—	—	—	13.25	
	036-33	*CK5PA048	36,000	TXV	—	14.00	—	—	12.05
		CC5A/CD5AA036	35,000	NONE	—	—	13.70	—	11.95
		CC5A/CD5AA042	35,600	NONE	—	—	13.70	—	11.95
		CC5A/CD5AC048	35,600	NONE	—	—	13.70	—	11.80
		CC5A/CD5AW036	35,000	NONE	—	—	13.70	—	11.95
		CC5A/CD5AW042	35,600	NONE	—	—	13.70	—	11.85
CC5A/CD5AW048		36,000	NONE	—	—	13.70	—	12.00	
CD5AA048		36,000	NONE	—	—	13.70	—	12.00	
CE3AA036		35,000	NONE	—	—	13.50	—	11.80	
CE3AA042		35,600	NONE	—	—	14.00	—	12.05	
CE3AA048		36,000	NONE	—	—	14.00	—	12.10	
CF5AA036		35,000	NONE	—	—	13.50	—	11.90	
CF5AA048		36,000	NONE	—	—	13.80	—	12.00	
CK3BA036		35,000	NONE	—	—	13.70	—	11.95	
CK3BA042		35,600	NONE	—	—	13.70	—	11.95	
CK3BA048		36,000	NONE	—	—	14.00	—	12.05	
CK5A/CK5BA036		35,000	NONE	—	—	13.70	—	11.95	
CK5A/CK5BA042		35,600	NONE	—	—	13.70	—	11.95	
CK5A/CK5BA048		36,000	NONE	—	—	14.00	—	12.05	
CK5A/CK5BE042		36,000	NONE	—	—	14.00	—	12.05	
CK5A/CK5BT036		35,000	NONE	—	—	13.70	—	11.95	
CK5A/CK5BT042		35,600	NONE	—	—	13.70	—	11.95	
CK5A/CK5BT048		36,000	NONE	—	—	14.00	—	12.05	
CK5A/CK5BW036		35,000	NONE	—	—	13.70	—	11.95	
CK5A/CK5BW048		36,000	NONE	—	—	14.00	—	12.05	
CK5PA036		35,000	TXV	—	13.70	—	—	11.95	
CK5PA042		35,600	TXV	—	13.70	—	—	11.95	
CK5PT036		35,000	TXV	—	13.70	—	—	11.95	
CK5PT042		35,600	TXV	—	13.70	—	—	11.95	
CK5PT048		36,000	TXV	—	14.00	—	—	12.05	
CK5PW036		35,000	TXV	—	13.70	—	—	11.95	
CK5PW048		36,000	TXV	—	14.00	—	—	12.05	
F(A,B)4(A,B)N(F,B,C)042		35,600	TDR	—	—	—	13.70	11.90	
F(A,B)4(A,B)N(F,B,C)048		36,000	TDR	—	—	—	13.80	11.95	
F(A,B)4(A,B)N(F,C)036		35,000	TDR	—	—	—	13.20	11.60	
FC4(B,C)N(F,B)042		35,600	TDR&TXV	13.70	—	—	—	11.90	
FC4(B,C)N(F,B)048		36,000	TDR&TXV	13.80	—	—	—	11.95	
FC4(B,C)NB054		36,000	TDR&TXV	14.50	—	—	—	12.75	
FC4(B,C)NF036		35,000	TDR&TXV	13.20	—	—	—	11.60	
FE4ANB006		36,200	TDR&TXV	15.75	—	—	—	14.05	
FE4ANF002		35,600	TDR&TXV	14.50	—	—	—	12.60	
FE4ANF003		35,800	TDR&TXV	15.20	—	—	—	13.20	
FE4ANF005	36,000	TDR&TXV	15.50	—	—	—	13.70		
FG3AAA036	35,000	NONE	—	—	13.50	—	11.70		
FG3AAA048	36,000	NONE	—	—	13.80	—	12.00		
FK4(C,D)NB006	36,200	TDR&TXV	15.75	—	—	—	14.10		

See notes on pg. 23.

Combination ratings continued

UNIT SIZE-SERIES	INDOOR MODEL	Cooling Capacity	Factory Enhance	SEER				EER	
				Standard Rating	Carrier Gas Furnace or Accessory TDR†	Carrier Gas Furnace or Accessory TDR† and Puron TXV‡	Accessory Puron TXV‡		
036-33	FK4(C,D)NF001	35,000	TDR&TXV	14.50	—	—	—	12.50	
	FK4(C,D)NF002	35,600	TDR&TXV	14.50	—	—	—	12.60	
	FK4(C,D)NF003	35,800	TDR&TXV	15.00	—	—	—	13.20	
	FK4(C,D)NF005	36,000	TDR&TXV	15.50	—	—	—	13.70	
	FV4(A,B)NB006	36,200	TDR&TXV	15.75	—	—	—	14.05	
	FV4(A,B)NF002	35,600	TDR&TXV	14.50	—	—	—	12.60	
	FV4(A,B)NF003	35,800	TDR&TXV	15.20	—	—	—	13.20	
	FV4(A,B)NF005	36,000	TDR&TXV	15.50	—	—	—	13.70	
	FX4(A,B)NF036	35,000	TDR&TXV	13.50	—	—	—	11.70	
	FX4(A,B)NF042	35,600	TDR&TXV	14.00	—	—	—	12.10	
	FX4(A,B)NF048	36,000	TDR&TXV	14.00	—	—	—	12.15	
	COILS + 58CV(A,X)070-12 VARIABLE-SPEED FURNACE								
		CC5A/CD5AA036	35,000	TDR	—	—	—	14.50	12.65
		CE3AA036	35,000	TDR	—	—	—	14.50	12.55
		CE3AA042	35,600	TDR	—	—	—	15.00	12.80
	CK3BA036	35,000	TDR	—	—	—	14.50	12.70	
	CK5A/CK5BA036	35,000	TDR	—	—	—	14.50	12.70	
	CK5A/CK5BE042	35,600	TDR	—	—	—	15.00	12.85	
	CK5A/CK5BT036	35,000	TDR	—	—	—	14.50	12.70	
	CK5PA036	35,000	TDR&TXV	14.50	—	—	—	12.70	
	CK5PE042	35,600	TDR&TXV	15.00	—	—	—	12.85	
	CK5PT036	35,000	TDR&TXV	14.50	—	—	—	12.70	
COILS + 58CV(A,X)090-16 VARIABLE-SPEED FURNACE									
	CC5A/CD5AA036	35,000	TDR	—	—	—	14.50	12.85	
	CC5A/CD5AA042	35,600	TDR	—	—	—	15.00	13.05	
	CC5A/CD5AC048	36,000	TDR	—	—	—	15.00	13.00	
	CC5A/CD5AW036	35,000	TDR	—	—	—	14.50	12.85	
	CD5AA048	36,000	TDR	—	—	—	15.00	12.80	
	CE3AA036	35,000	TDR	—	—	—	14.50	12.75	
	CE3AA042	35,600	TDR	—	—	—	15.00	13.00	
	CE3AA048	36,000	TDR	—	—	—	15.00	13.05	
	CK3BA036	35,000	TDR	—	—	—	14.50	12.95	
	CK3BA042	35,600	TDR	—	—	—	15.00	13.00	
	CK3BA048	36,000	TDR	—	—	—	15.00	13.15	
	CK5A/CK5BA036	35,000	TDR	—	—	—	14.50	12.95	
	CK5A/CK5BA042	35,600	TDR	—	—	—	15.00	13.00	
	CK5A/CK5BA048	36,000	TDR	—	—	—	15.00	13.15	
	CK5A/CK5BE042	35,800	TDR	—	—	—	15.00	13.10	
	CK5A/CK5BT036	35,000	TDR	—	—	—	14.50	12.95	
	CK5A/CK5BT042	35,600	TDR	—	—	—	15.00	13.00	
	CK5A/CK5BT048	36,000	TDR	—	—	—	15.00	13.15	
	CK5A/CK5BW036	35,000	TDR	—	—	—	14.50	12.95	
	CK5PA036	35,000	TDR&TXV	14.50	—	—	—	12.95	
	CK5PA042	35,600	TDR&TXV	15.00	—	—	—	13.00	
	CK5PA048	36,000	TDR&TXV	15.00	—	—	—	13.15	
	CK5PE042	35,600	TDR&TXV	15.00	—	—	—	13.10	
	CK5PT036	35,000	TDR&TXV	14.50	—	—	—	12.95	
	CK5PT042	35,600	TDR&TXV	15.00	—	—	—	13.00	
	CK5PT048	36,000	TDR&TXV	15.00	—	—	—	13.15	
	CK5PW036	35,000	TDR&TXV	14.50	—	—	—	12.95	
COILS + 58CV(A,X)110-20 VARIABLE-SPEED FURNACE									
	CC5A/CD5AA036	35,000	TDR	—	—	—	14.50	12.60	
	CC5A/CD5AA042	35,600	TDR	—	—	—	15.00	12.95	
	CC5A/CD5AC048	36,000	TDR	—	—	—	15.00	12.85	
	CC5A/CD5AW036	35,000	TDR	—	—	—	14.50	12.90	
	CC5A/CD5AW042	35,600	TDR	—	—	—	15.00	12.85	
	CC5A/CD5AW048	36,000	TDR	—	—	—	15.00	13.05	
	CD5AA048	36,000	TDR	—	—	—	15.00	13.05	
	CE3AA036	35,000	TDR	—	—	—	14.50	12.70	
	CE3AA042	35,600	TDR	—	—	—	15.00	13.00	
	CK3BA036	35,000	TDR	—	—	—	14.50	12.90	
	CK3BA042	35,600	TDR	—	—	—	15.00	12.95	
	CK3BA048	36,000	TDR	—	—	—	15.00	13.15	
	CK5A/CK5BA036	35,000	TDR	—	—	—	14.50	12.90	
	CK5A/CK5BA042	35,600	TDR	—	—	—	15.00	12.95	
	CK5A/CK5BA048	36,000	TDR	—	—	—	15.00	13.10	
	CK5A/CK5BE042	35,600	TDR	—	—	—	15.00	13.05	
	CK5A/CK5BT036	35,000	TDR	—	—	—	14.50	12.90	
	CK5A/CK5BT042	35,600	TDR	—	—	—	15.00	12.95	
	CK5A/CK5BT048	36,000	TDR	—	—	—	15.00	13.10	
	CK5A/CK5BW036	35,000	TDR	—	—	—	14.50	12.95	
	CK5PA036	35,000	TDR&TXV	14.50	—	—	—	12.90	
	CK5PA042	35,600	TDR&TXV	15.00	—	—	—	12.95	
	CK5PA048	36,000	TDR&TXV	15.00	—	—	—	13.10	
	CK5PE042	35,600	TDR&TXV	15.00	—	—	—	13.05	
	CK5PT036	35,000	TDR&TXV	14.50	—	—	—	12.90	
	CK5PT042	35,600	TDR&TXV	15.00	—	—	—	12.95	
	CK5PT048	36,000	TDR&TXV	15.00	—	—	—	13.10	
	CK5PW036	35,000	TDR&TXV	14.50	—	—	—	12.95	
	CK5PW048	36,000	TDR&TXV	15.00	—	—	—	13.20	
COILS + 58CV(A,X)135-22 VARIABLE-SPEED FURNACE									
	CC5A/CD5AA042	35,600	TDR	—	—	—	15.00	13.10	

See notes on pg. 23.

Combination ratings continued

UNIT SIZE-SERIES	INDOOR MODEL	Cooling Capacity	Factory Enhance	SEER				EER	
				Standard Rating	Carrier Gas Furnace or Accessory TDR†	Carrier Gas Furnace or Accessory TDR† and Puron TXV‡	Accessory Puron TXV‡		
036-33	CC5A/CD5AC048	36,000	TDR	—	—	—	15.00	13.05	
	CC5A/CD5AW036	35,000	TDR	—	—	—	14.50	12.90	
	CC5A/CD5AW042	35,600	TDR	—	—	—	15.00	13.00	
	CC5A/CD5AW048	36,000	TDR	—	—	—	15.00	13.20	
	CD5AA048	36,000	TDR	—	—	—	15.00	13.20	
	CE3AA036	35,000	TDR	—	—	—	14.50	12.80	
	CE3AA042	35,600	TDR	—	—	—	15.50	13.10	
	CE3AA048	36,000	TDR	—	—	—	15.00	13.15	
	CK3BA042	35,600	TDR	—	—	—	15.00	13.05	
	CK3BA048	36,000	TDR	—	—	—	15.00	13.25	
	CK5A/CK5BA042	35,600	TDR	—	—	—	15.00	13.05	
	CK5A/CK5BA048	36,000	TDR	—	—	—	15.00	13.25	
	CK5A/CK5BT042	35,600	TDR	—	—	—	15.00	13.05	
	CK5A/CK5BT048	36,000	TDR	—	—	—	15.00	13.25	
	CK5A/CK5BW036	35,000	TDR	—	—	—	14.50	12.95	
	CK5A/CK5BW048	36,000	TDR	—	—	—	15.00	13.25	
	CK5PA042	35,600	TDR&TXV	15.00	—	—	—	13.05	
	CK5PA048	36,000	TDR&TXV	15.00	—	—	—	13.25	
	CK5PT042	35,600	TDR&TXV	15.00	—	—	—	13.05	
	CK5PT048	36,000	TDR&TXV	15.00	—	—	—	13.25	
	CK5PW036	35,000	TDR&TXV	14.50	—	—	—	12.95	
	CK5PW048	36,000	TDR&TXV	15.00	—	—	—	13.25	
	COILS + 58CV(A,X)155-22 VARIABLE-SPEED FURNACE								
		CC5A/CD5AA042	35,600	TDR	—	—	—	15.00	13.20
		CC5A/CD5AC048	36,000	TDR	—	—	—	15.00	13.10
		CC5A/CD5AW036	35,000	TDR	—	—	—	14.50	13.15
		CC5A/CD5AW042	35,600	TDR	—	—	—	15.00	13.10
		CC5A/CD5AW048	36,000	TDR	—	—	—	15.00	13.30
		CD5AA048	36,000	TDR	—	—	—	15.00	13.30
		CE3AA036	35,000	TDR	—	—	—	14.50	12.90
		CE3AA042	35,600	TDR	—	—	—	15.00	13.25
		CE3AA048	36,000	TDR	—	—	—	15.00	13.30
		CK3BA042	35,600	TDR	—	—	—	14.50	15.40
		CK3BA048	36,000	TDR	—	—	—	15.00	13.40
		CK5A/CK5BA042	35,600	TDR	—	—	—	15.00	13.25
	CK5A/CK5BA048	36,000	TDR	—	—	—	15.00	13.40	
	CK5A/CK5BT042	35,600	TDR	—	—	—	15.00	13.20	
	CK5A/CK5BT048	36,000	TDR	—	—	—	15.00	13.40	
	CK5A/CK5BW036	35,000	TDR	—	—	—	14.50	13.20	
	CK5A/CK5BW048	36,000	TDR	—	—	—	15.00	13.45	
	CK5PA042	35,600	TDR&TXV	14.50	—	—	—	15.40	
	CK5PA048	36,000	TDR&TXV	15.00	—	—	—	13.40	
	CK5PT042	35,600	TDR&TXV	15.00	—	—	—	13.20	
	CK5PT048	36,000	TDR&TXV	15.00	—	—	—	13.40	
	CK5PW036	35,000	TDR&TXV	14.50	—	—	—	13.20	
	CK5PW048	36,000	TDR&TXV	15.00	—	—	—	13.45	
COILS + 58MVP040-14 VARIABLE-SPEED FURNACE									
	CC5A/CD5AA042	35,600	TDR	—	—	—	14.50	12.75	
	CC5A/CD5AW036	35,000	TDR	—	—	—	14.50	12.65	
	CC5A/CD5AW048	36,000	TDR	—	—	—	14.50	12.75	
	CK5A/CK5BA042	35,600	TDR	—	—	—	14.50	12.80	
	CK5A/CK5BW036	35,000	TDR	—	—	—	14.50	12.70	
	CK5A/CK5BW048	36,000	TDR	—	—	—	15.00	12.90	
	CK5PA042	35,600	TDR&TXV	14.50	—	—	—	12.80	
	CK5PW036	35,000	TDR&TXV	14.50	—	—	—	12.70	
	CK5PW048	36,000	TDR&TXV	15.00	—	—	—	12.90	
COILS + 58MVP060-14 VARIABLE-SPEED FURNACE									
	CC5A/CD5AA036	35,000	TDR	—	—	—	14.50	12.60	
	CK3BA036	35,000	TDR	—	—	—	14.50	12.65	
	CK3BA042	35,600	TDR	—	—	—	14.50	12.75	
	CK5A/CK5BA036	35,000	TDR	—	—	—	14.50	12.65	
	CK5A/CK5BE042	36,000	TDR	—	—	—	14.50	12.75	
	CK5PA036	35,000	TDR&TXV	14.50	—	—	—	12.65	
COILS + 58MVP080-14 VARIABLE-SPEED FURNACE									
	CC5A/CD5AA042	35,600	TDR	—	—	—	14.50	12.85	
	CC5A/CD5AC048	35,600	TDR	—	—	—	14.50	12.65	
	CC5A/CD5AW036	35,000	TDR	—	—	—	14.50	12.75	
	CD5AA048	36,000	TDR	—	—	—	15.00	12.90	
	CK3BA042	35,600	TDR	—	—	—	14.50	12.90	
	CK3BA048	36,000	TDR	—	—	—	15.00	13.00	
	CK5A/CK5BA042	35,600	TDR	—	—	—	14.50	12.90	
	CK5A/CK5BA048	36,000	TDR	—	—	—	15.00	13.00	
	CK5A/CK5BW036	35,000	TDR	—	—	—	14.50	12.80	
	CK5PA042	35,600	TDR&TXV	14.50	—	—	—	12.90	
	CK5PA048	36,000	TDR&TXV	15.00	—	—	—	13.00	
	CK5PW036	35,000	TDR&TXV	14.50	—	—	—	12.80	
COILS + 58MVP080-20 VARIABLE-SPEED FURNACE									
	CC5A/CD5AA042	35,600	TDR	—	—	—	14.50	12.70	
	CC5A/CD5AC048	35,600	TDR	—	—	—	14.50	12.50	

See notes on pg. 23.

Combination ratings continued

UNIT SIZE-SERIES	INDOOR MODEL	Cooling Capacity	Factory Enhance	SEER				EER	
				Standard Rating	Carrier Gas Furnace or Accessory TDR†	Carrier Gas Furnace or Accessory TDR† and Puron TXV‡	Accessory Puron TXV‡		
036-33	CC5A/CD5AW036	35,000	TDR	—	—	—	14.50	12.60	
	CD5AA048	36,000	TDR	—	—	—	14.50	12.75	
	CK3BA042	35,600	TDR	—	—	—	14.50	12.75	
	CK3BA048	36,000	TDR	—	—	—	14.50	12.85	
	CK5A/CK5BA042	35,600	TDR	—	—	—	14.50	12.75	
	CK5A/CK5BA048	36,000	TDR	—	—	—	14.50	12.85	
	CK5A/CK5BW036	35,000	TDR	—	—	—	14.50	12.65	
	CK5PA042	35,600	TDR&TXV	14.50	—	—	—	12.75	
	CK5PA048	36,000	TDR&TXV	14.50	—	—	—	12.85	
	CK5PW036	35,000	TDR&TXV	14.50	—	—	—	12.65	
	COILS + 58MVP100-20 VARIABLE-SPEED FURNACE								
	CC5A/CD5AA042	35,600	TDR	—	—	—	15.00	13.00	
	CC5A/CD5AC048	35,600	TDR	—	—	—	14.50	12.85	
	CC5A/CD5AW036	35,000	TDR	—	—	—	15.00	12.95	
	CD5AA048	36,000	TDR	—	—	—	15.00	13.05	
	CK3BA042	35,600	TDR	—	—	—	15.00	13.10	
	CK3BA048	36,000	TDR	—	—	—	15.00	13.20	
	CK5A/CK5BA042	35,600	TDR	—	—	—	15.00	13.10	
	CK5A/CK5BA048	36,000	TDR	—	—	—	15.00	13.20	
	CK5A/CK5BW036	35,000	TDR	—	—	—	15.00	13.05	
	CK5PA042	35,600	TDR&TXV	15.00	—	—	—	13.10	
	CK5PA048	36,000	TDR&TXV	15.00	—	—	—	13.20	
	CK5PW036	35,000	TDR&TXV	15.00	—	—	—	13.05	
	COILS + 58MVP120-20 VARIABLE-SPEED FURNACE								
	CC5A/CD5AA042	35,600	TDR	—	—	—	15.00	13.00	
	CC5A/CD5AW036	35,000	TDR	—	—	—	15.00	12.90	
	CC5A/CD5AW048	36,000	TDR	—	—	—	15.00	13.00	
	CK5A/CK5BW036	35,000	TDR	—	—	—	15.00	12.95	
	CK5A/CK5BW048	36,000	TDR	—	—	—	15.00	13.15	
	CK5PW036	35,000	TDR&TXV	15.00	—	—	—	12.95	
	CK5PW048	36,000	TDR&TXV	15.00	—	—	—	13.15	
	042-33	*CK5PA060	42,000	TXV	—	14.00	—	—	12.00
		CC5A/CD5AA042	40,000	NONE	—	—	13.30	—	11.70
		CC5A/CD5AA060	41,500	NONE	—	—	13.30	—	11.70
		CC5A/CD5AC048	40,500	NONE	—	—	13.30	—	11.55
		CC5A/CD5AW042	40,000	NONE	—	—	13.30	—	11.60
		CC5A/CD5AW048	41,000	NONE	—	—	13.50	—	11.70
CC5A/CD5AW060		42,000	NONE	—	—	13.50	—	11.95	
CD5AA048		41,000	NONE	—	—	13.40	—	11.70	
CE3AA042		40,000	NONE	—	—	13.30	—	11.75	
CE3AA048		41,000	NONE	—	—	13.50	—	11.80	
CE3AA060		41,000	NONE	—	—	14.00	—	12.00	
CF5AA048		41,000	NONE	—	—	13.40	—	11.70	
CK3BA042		40,000	NONE	—	—	13.30	—	11.70	
CK3BA048		41,000	NONE	—	—	13.50	—	11.75	
CK3BA060		41,500	NONE	—	—	14.00	—	12.00	
CK5A/CK5BA042		40,000	NONE	—	—	13.30	—	11.70	
CK5A/CK5BA048		41,000	NONE	—	—	13.50	—	11.75	
CK5A/CK5BA060		42,000	NONE	—	—	14.00	—	12.00	
CK5A/CK5BE042		40,500	NONE	—	—	13.50	—	11.75	
CK5A/CK5BT042		40,000	NONE	—	—	13.30	—	11.70	
CK5A/CK5BT048		41,000	NONE	—	—	13.50	—	11.75	
CK5A/CK5BT060		42,000	NONE	—	—	14.00	—	12.00	
CK5A/CK5BW048		41,000	NONE	—	—	13.50	—	11.75	
CK5A/CK5BX060		42,000	NONE	—	—	13.70	—	12.10	
CK5PA042		40,000	TXV	—	13.30	—	—	11.70	
CK5PA048		41,000	TXV	—	13.50	—	—	11.75	
CK5PE042		40,500	TXV	—	13.50	—	—	11.75	
CK5PT042		40,000	TXV	—	13.30	—	—	11.70	
CK5PT048		41,000	TXV	—	13.50	—	—	11.75	
CK5PT060		42,000	TXV	—	14.00	—	—	12.00	
CK5PW048		41,000	TXV	—	13.50	—	—	11.75	
CK5PX060		42,000	TXV	—	13.70	—	—	12.10	
F(A,B)4(A,B)N(F,B,C)042		40,000	TDR	—	—	—	13.20	11.50	
F(A,B)4(A,B)N(F,B,C)048		41,000	TDR	—	—	—	13.50	11.70	
F(A,B)4(A,B)N(F,B,C)060		42,000	TDR	—	—	—	13.20	11.60	
FB4(A,B)NB070		42,500	TDR	—	—	—	13.50	11.95	
FC4(B,C)N(F,B)042		40,000	TDR&TXV	13.20	—	—	—	11.50	
FC4(B,C)N(F,B)048		41,000	TDR&TXV	13.50	—	—	—	11.70	
FC4(B,C)N(F,B)060		42,000	TDR&TXV	13.20	—	—	—	11.60	
FC4(B,C)NB054		41,500	TDR&TXV	14.00	—	—	—	12.45	
FC4(B,C)NB070		42,500	TDR&TXV	13.50	—	—	—	11.95	
FE4ANB006		42,000	TDR&TXV	—	—	—	—	13.60	
FE4ANF003		40,000	TDR&TXV	—	—	—	—	12.65	
FE4ANF005		41,500	TDR&TXV	—	—	—	—	13.20	
FG3AAA048		41,000	NONE	—	—	13.50	—	11.70	
FG3AAA060		41,000	NONE	—	—	13.50	—	11.85	
FK4(C,D)NB006		42,000	TDR&TXV	15.00	—	—	—	13.60	
FK4(C,D)NF003	40,000	TDR&TXV	14.20	—	—	—	12.65		
FK4(C,D)NF005	41,500	TDR&TXV	15.00	—	—	—	13.20		
FV4(A,B)NB006	42,000	TDR&TXV	15.10	—	—	—	13.60		
FV4(A,B)NF003	40,000	TDR&TXV	14.30	—	—	—	12.65		

See notes on pg. 23.

Combination ratings continued

UNIT SIZE-SERIES	INDOOR MODEL	Cooling Capacity	Factory Enhance	SEER				EER	
				Standard Rating	Carrier Gas Furnace or Accessory TDR†	Carrier Gas Furnace or Accessory TDR† and Puron TXV‡	Accessory Puron TXV‡		
042-33	FV4(A,B)NF005	41,500	TDR&TXV	15.00	—	—	—	13.20	
	FX4(A,B)NB060	42,000	TDR&TXV	13.50	—	—	—	11.95	
	FX4(A,B)NF042	40,000	TDR&TXV	13.50	—	—	—	11.70	
	FX4(A,B)NF048	41,000	TDR&TXV	13.60	—	—	—	11.90	
	COILS + 58CV(A,X)090-16 VARIABLE-SPEED FURNACE								
	CC5A/CD5AA042	40,000	TDR	—	—	—	14.50	12.50	
	CC5A/CD5AC048	40,000	TDR	—	—	—	14.50	12.55	
	CD5AA048	41,000	TDR	—	—	—	14.50	12.70	
	CE3AA042	40,000	TDR	—	—	—	14.50	12.55	
	CE3AA048	41,000	TDR	—	—	—	14.50	12.60	
	CK3BA042	40,000	TDR	—	—	—	14.50	12.55	
	CK3BA048	41,000	TDR	—	—	—	14.50	12.65	
	CK5A/CK5BA042	40,000	TDR	—	—	—	14.50	12.55	
	CK5A/CK5BA048	41,000	TDR	—	—	—	14.50	12.65	
	CK5A/CK5BE042	40,500	TDR	—	—	—	14.50	12.60	
	CK5A/CK5BT042	40,000	TDR	—	—	—	14.50	12.55	
	CK5A/CK5BT048	41,000	TDR	—	—	—	14.50	12.65	
	CK5PA042	40,000	TDR&TXV	14.50	—	—	—	12.55	
	CK5PA048	41,000	TDR&TXV	14.50	—	—	—	12.65	
	CK5PE042	40,500	TDR&TXV	14.50	—	—	—	12.60	
	CK5PT042	40,000	TDR&TXV	14.50	—	—	—	12.55	
	CK5PT048	41,000	TDR&TXV	14.50	—	—	—	12.65	
	COILS + 58CV(A,X)110-20 VARIABLE-SPEED FURNACE								
	CC5A/CD5AA042	40,000	TDR	—	—	—	14.00	12.05	
	CC5A/CD5AA060	40,500	TDR	—	—	—	14.00	12.20	
	CC5A/CD5AC048	40,000	TDR	—	—	—	14.00	11.95	
	CC5A/CD5AW042	40,000	TDR	—	—	—	14.00	11.85	
	CC5A/CD5AW048	41,000	TDR	—	—	—	14.00	12.05	
	CD5AA048	40,500	TDR	—	—	—	14.00	12.20	
	CD5PX060	41,500	TDR&TXV	14.50	—	—	—	12.60	
	CE3AA042	40,000	TDR	—	—	—	14.00	12.10	
	CE3AA048	41,000	TDR	—	—	—	14.00	12.15	
	CE3AA060	41,500	TDR	—	—	—	14.50	12.55	
	CK3BA042	40,000	TDR	—	—	—	14.00	12.05	
	CK3BA048	41,000	TDR	—	—	—	14.00	12.25	
	CK3BA060	41,500	TDR	—	—	—	14.50	12.55	
	CK5A/CK5BA042	40,000	TDR	—	—	—	14.00	12.00	
	CK5A/CK5BA048	41,000	TDR	—	—	—	14.00	12.20	
	CK5A/CK5BA060	41,500	TDR	—	—	—	14.50	12.60	
	CK5A/CK5BE042	40,000	TDR	—	—	—	14.00	12.05	
CK5A/CK5BT042	40,000	TDR	—	—	—	14.00	12.00		
CK5A/CK5BT048	41,000	TDR	—	—	—	14.00	12.20		
CK5A/CK5BT060	41,500	TDR	—	—	—	14.50	12.60		
CK5A/CK5BW048	41,000	TDR	—	—	—	14.00	12.35		
CK5A/CK5BX060	41,500	TDR	—	—	—	14.50	12.65		
CK5PA042	40,000	TDR&TXV	14.00	—	—	—	12.00		
CK5PA048	41,000	TDR&TXV	14.00	—	—	—	12.20		
CK5PA060	41,500	TDR&TXV	14.50	—	—	—	12.40		
CK5PE042	40,000	TDR&TXV	14.00	—	—	—	12.05		
CK5PT042	40,000	TDR&TXV	14.00	—	—	—	12.00		
CK5PT048	41,000	TDR&TXV	14.00	—	—	—	12.20		
CK5PT060	41,500	TDR&TXV	14.50	—	—	—	12.60		
CK5PW048	41,000	TDR&TXV	14.00	—	—	—	12.30		
CK5PX060	41,500	TDR&TXV	14.50	—	—	—	12.65		
COILS + 58CV(A,X)135-22 VARIABLE-SPEED FURNACE									
CC5A/CD5AA042	40,000	TDR	—	—	—	14.50	12.65		
CC5A/CD5AA060	41,500	TDR	—	—	—	14.50	12.85		
CC5A/CD5AC048	40,000	TDR	—	—	—	14.50	12.70		
CC5A/CD5AW042	40,000	TDR	—	—	—	14.50	12.55		
CC5A/CD5AW048	41,000	TDR	—	—	—	14.50	12.85		
CC5A/CD5AW060	42,000	TDR	—	—	—	15.00	13.20		
CD5AA048	41,000	TDR	—	—	—	14.50	12.85		
CE3AA042	40,000	TDR	—	—	—	14.50	12.70		
CE3AA048	41,000	TDR	—	—	—	14.50	12.75		
CE3AA060	41,500	TDR	—	—	—	15.00	13.15		
CK3BA042	40,000	TDR	—	—	—	14.50	12.65		
CK3BA048	41,000	TDR	—	—	—	14.50	12.85		
CK3BA060	41,500	TDR	—	—	—	14.50	13.15		
CK5A/CK5BA042	40,000	TDR	—	—	—	14.50	12.65		
CK5A/CK5BA048	41,000	TDR	—	—	—	14.50	12.85		
CK5A/CK5BA060	41,500	TDR	—	—	—	14.50	13.15		
CK5A/CK5BT042	40,000	TDR	—	—	—	14.50	12.65		
CK5A/CK5BT048	41,000	TDR	—	—	—	14.50	12.85		
CK5A/CK5BT060	41,500	TDR	—	—	—	14.50	13.15		
CK5A/CK5BW048	41,000	TDR	—	—	—	14.50	12.85		
CK5A/CK5BX060	42,000	TDR	—	—	—	15.00	13.40		
CK5PA042	40,000	TDR&TXV	14.50	—	—	—	12.65		
CK5PA048	41,000	TDR&TXV	14.50	—	—	—	12.85		
CK5PA060	41,500	TDR&TXV	14.50	—	—	—	13.15		
CK5PT042	40,000	TDR&TXV	14.50	—	—	—	12.65		
CK5PT048	41,000	TDR&TXV	14.50	—	—	—	12.85		

See notes on pg. 23.

Combination ratings continued

UNIT SIZE-SERIES	INDOOR MODEL	Cooling Capacity	Factory Enhance	SEER				EER	
				Standard Rating	Carrier Gas Furnace or Accessory TDR†	Carrier Gas Furnace or Accessory TDR† and Puron TXV‡	Accessory Puron TXV‡		
042-33	CK5PT060	41,500	TDR&TXV	14.50	—	—	—	13.15	
	CK5PW048	41,000	TDR&TXV	14.50	—	—	—	12.85	
	CK5PX060	42,000	TDR&TXV	15.00	—	—	—	13.40	
	COILS + 58CV(A,X)155-22 VARIABLE-SPEED FURNACE								
	CC5A/CD5AA042	40,000	TDR	—	—	—	14.50	12.70	
	CC5A/CD5AA060	41,500	TDR	—	—	—	14.50	12.70	
	CC5A/CD5AC048	40,000	TDR	—	—	—	14.50	12.75	
	CC5A/CD5AW042	40,000	TDR	—	—	—	14.50	12.60	
	CC5A/CD5AW048	41,000	TDR	—	—	—	14.50	12.90	
	CC5A/CD5AW060	42,000	TDR	—	—	—	15.00	13.15	
	CD5AA048	41,000	TDR	—	—	—	14.50	12.90	
	CE3AA042	40,000	TDR	—	—	—	14.50	12.75	
	CE3AA048	41,000	TDR	—	—	—	14.50	12.80	
	CE3AA060	41,500	TDR	—	—	—	15.00	13.20	
	CK3BA042	40,000	TDR	—	—	—	14.50	12.70	
	CK3BA048	41,000	TDR	—	—	—	14.50	12.90	
	CK3BA060	41,500	TDR	—	—	—	14.50	13.20	
	CK5A/CK5BA042	40,000	TDR	—	—	—	14.50	12.70	
	CK5A/CK5BA048	41,000	TDR	—	—	—	14.50	12.90	
	CK5A/CK5BA060	41,500	TDR	—	—	—	14.50	13.20	
	CK5A/CK5BT042	40,000	TDR	—	—	—	14.50	12.70	
	CK5A/CK5BT048	41,000	TDR	—	—	—	14.50	12.90	
	CK5A/CK5BT060	41,500	TDR	—	—	—	14.50	13.20	
	CK5A/CK5BW048	41,000	TDR	—	—	—	14.50	12.90	
	CK5A/CK5BX060	42,000	TDR	—	—	—	15.00	13.40	
	CK5PA042	40,000	TDR&TXV	14.50	—	—	—	12.70	
	CK5PA048	41,000	TDR&TXV	14.50	—	—	—	12.90	
	CK5PA060	41,500	TDR&TXV	14.50	—	—	—	13.20	
	CK5PT042	40,000	TDR&TXV	14.50	—	—	—	12.70	
	CK5PT048	41,000	TDR&TXV	14.50	—	—	—	12.90	
	CK5PT060	41,500	TDR&TXV	14.50	—	—	—	13.20	
	CK5PW048	41,000	TDR&TXV	14.50	—	—	—	12.90	
	CK5PX060	42,000	TDR&TXV	15.00	—	—	—	13.45	
	COILS + 58MVP040-14 VARIABLE-SPEED FURNACE								
	CC5A/CD5AA042	40,000	TDR	—	—	—	14.00	12.15	
	CC5A/CD5AW048	41,000	TDR	—	—	—	14.00	12.30	
	CK5A/CK5BA042	40,000	TDR	—	—	—	14.00	12.20	
	CK5A/CK5BW048	41,000	TDR	—	—	—	14.10	12.35	
	CK5PA042	40,000	TDR&TXV	14.00	—	—	—	12.20	
	CK5PW048	41,000	TDR&TXV	14.10	—	—	—	12.35	
	COILS + 58MVP060-14 VARIABLE-SPEED FURNACE								
	CK3BA042	40,000	TDR	—	—	—	14.00	12.20	
	CK5A/CK5BE042	40,000	TDR	—	—	—	14.00	12.20	
	CK5PE042	40,000	TDR&TXV	14.00	—	—	—	12.20	
	COILS + 58MVP080-14 VARIABLE-SPEED FURNACE								
	CC5A/CD5AA042	40,000	TDR	—	—	—	14.00	12.30	
	CC5A/CD5AC048	40,500	TDR	—	—	—	14.00	12.25	
	CD5AA048	41,000	TDR	—	—	—	14.00	12.45	
	CK3BA042	40,000	TDR	—	—	—	14.00	12.35	
	CK3BA048	41,000	TDR	—	—	—	14.00	12.50	
	CK5A/CK5BA042	40,000	TDR	—	—	—	14.00	12.35	
	CK5A/CK5BA048	41,000	TDR	—	—	—	14.00	11.65	
	CK5PA042	40,000	TDR&TXV	14.00	—	—	—	12.35	
	CK5PA048	41,000	TDR&TXV	14.00	—	—	—	11.65	
	COILS + 58MVP080-20 VARIABLE-SPEED FURNACE								
	CC5A/CD5AA042	40,000	TDR	—	—	—	14.00	12.15	
	CC5A/CD5AA060	41,000	TDR	—	—	—	14.00	12.25	
	CC5A/CD5AC048	40,500	TDR	—	—	—	14.00	12.05	
	CC5A/CD5AW060	42,000	TDR	—	—	—	14.50	12.60	
	CD5AA048	41,000	TDR	—	—	—	14.00	12.25	
	CK3BA042	40,000	TDR	—	—	—	14.00	12.20	
	CK3BA048	41,000	TDR	—	—	—	14.00	12.35	
	CK3BA060	41,500	TDR	—	—	—	14.00	12.60	
	CK5A/CK5BA042	40,000	TDR	—	—	—	14.00	12.20	
	CK5A/CK5BA048	41,000	TDR	—	—	—	14.00	12.35	
	CK5A/CK5BA060	41,500	TDR	—	—	—	14.00	12.60	
	CK5A/CK5BX060	42,000	TDR	—	—	—	14.50	12.80	
	CK5PA042	40,000	TDR&TXV	14.00	—	—	—	12.20	
	CK5PA048	41,000	TDR&TXV	14.00	—	—	—	12.35	
	CK5PA060	41,500	TDR&TXV	14.00	—	—	—	12.60	
	CK5PX060	42,000	TDR&TXV	14.50	—	—	—	12.80	
	COILS + 58MVP100-20 VARIABLE-SPEED FURNACE								
	CC5A/CD5AA042	40,000	TDR	—	—	—	14.50	12.55	
	CC5A/CD5AA060	41,000	TDR	—	—	—	14.50	12.65	
	CC5A/CD5AC048	40,500	TDR	—	—	—	14.50	12.45	
	CC5A/CD5AW060	42,000	TDR	—	—	—	15.00	12.95	
	CD5AA048	41,000	TDR	—	—	—	14.50	12.65	
	CK3BA042	40,000	TDR	—	—	—	14.50	12.55	

See notes on pg. 23.

Combination ratings continued

UNIT SIZE-SERIES	INDOOR MODEL	Cooling Capacity	Factory Enhance	SEER				EER	
				Standard Rating	Carrier Gas Furnace or Accessory TDR†	Carrier Gas Furnace or Accessory TDR† and Puron TXV‡	Accessory Puron TXV‡		
042-33	CK3BA048	41,000	TDR	—	—	—	14.50	12.70	
	CK3BA060	41,500	TDR	—	—	—	14.50	12.95	
	CK5A/CK5BA042	40,000	TDR	—	—	—	14.50	12.55	
	CK5A/CK5BA048	41,000	TDR	—	—	—	14.50	12.70	
	CK5A/CK5BA060	41,500	TDR	—	—	—	14.50	12.95	
	CK5A/CK5BX060	42,000	TDR	—	—	—	15.00	13.15	
	CK5PA042	40,000	TDR&TXV	14.50	—	—	—	12.55	
	CK5PA048	41,000	TDR&TXV	14.50	—	—	—	12.70	
	CK5PA060	41,500	TDR&TXV	14.50	—	—	—	12.95	
	CK5PX060	42,000	TDR&TXV	15.00	—	—	—	13.15	
	COILS + 58MVP120-20 VARIABLE-SPEED FURNACE								
		CC5A/CD5AA042	40,000	TDR	—	—	—	14.50	12.55
		CC5A/CD5AA060	41,000	TDR	—	—	—	14.50	12.60
		CC5A/CD5AW048	41,000	TDR	—	—	—	14.50	12.60
		CC5A/CD5AW060	42,000	TDR	—	—	—	15.00	12.95
		CK3BA060	41,500	TDR	—	—	—	14.50	12.95
		CK5A/CK5BA042	40,000	TDR	—	—	—	14.50	12.55
		CK5A/CK5BA060	41,500	TDR	—	—	—	14.50	12.95
		CK5A/CK5BW048	41,000	TDR	—	—	—	14.50	12.70
		CK5A/CK5BX060	42,000	TDR	—	—	—	15.00	13.15
		CK5PA042	40,000	TDR&TXV	14.50	—	—	—	12.55
		CK5PA060	41,500	TDR&TXV	14.50	—	—	—	12.95
		CK5PW048	41,000	TDR&TXV	14.50	—	—	—	12.70
		CK5PX060	42,000	TDR&TXV	15.00	—	—	—	13.15
	048-31	*CD5PX060	47,500	TXV	—	14.00	—	—	12.00
		CC5A/CD5AA060	46,000	NONE	—	—	13.50	—	11.60
		CC5A/CD5AC048	45,000	NONE	—	—	13.00	—	11.45
CC5A/CD5AW048		45,500	NONE	—	—	13.50	—	11.60	
CC5A/CD5AW060		47,000	NONE	—	—	13.50	—	11.85	
CD5AA048		45,500	NONE	—	—	13.50	—	11.60	
CE3AA048		46,500	NONE	—	—	13.50	—	11.70	
CE3AA060		47,500	NONE	—	—	13.50	—	11.95	
CF5AA048		46,000	NONE	—	—	13.50	—	11.65	
CK3BA048		46,000	NONE	—	—	13.50	—	11.65	
CK3BA060		47,000	NONE	—	—	13.50	—	11.90	
CK5A/CK5BA048		46,000	NONE	—	—	13.50	—	11.65	
CK5A/CK5BA060		47,000	NONE	—	—	13.50	—	11.90	
CK5A/CK5BT048		46,000	NONE	—	—	13.50	—	11.65	
CK5A/CK5BT060		47,000	NONE	—	—	13.50	—	11.90	
CK5A/CK5BW048		46,000	NONE	—	—	13.50	—	11.65	
CK5A/CK5BX060		47,500	NONE	—	—	14.00	—	12.05	
CK5PA048		46,000	TXV	—	13.50	—	—	11.65	
CK5PA060		47,000	TXV	—	13.50	—	—	11.90	
CK5PT048		46,000	TXV	—	13.50	—	—	11.65	
CK5PT060		47,000	TXV	—	13.50	—	—	11.90	
CK5PW048		46,000	TXV	—	13.50	—	—	11.65	
CK5PX060		47,500	TXV	—	14.00	—	—	12.05	
F(A,B)4BN(F,B,C)048		47,000	TDR	—	—	—	13.50	11.65	
F(A,B)4BN(F,B,C)060		47,500	TDR	—	—	—	13.50	11.60	
FB4BNB070		48,000	TDR	—	—	—	13.50	11.90	
FC4CN(FB)048		47,000	TDR&TXV	13.50	—	—	—	11.65	
FC4CN(FB)060		47,500	TDR&TXV	13.50	—	—	—	11.60	
FC4CNB054		48,000	TDR&TXV	13.50	—	—	—	12.30	
FC4CNB070		48,000	TDR&TXV	13.50	—	—	—	11.90	
FE4ANB006		48,500	TDR&TXV	15.00	—	—	—	13.20	
FE4ANF005		48,000	TDR&TXV	15.00	—	—	—	12.90	
FG3AAA048		45,000	NONE	—	—	13.00	—	11.55	
FK4DNB006		48,500	TDR&TXV	15.00	—	—	—	13.20	
FK4DNF005		48,000	TDR&TXV	15.00	—	—	—	12.90	
FV4BNB006		48,500	TDR&TXV	15.00	—	—	—	13.20	
FV4BNF005		48,000	TDR&TXV	15.00	—	—	—	12.90	
FX4BNB060		47,500	TDR&TXV	13.50	—	—	—	11.90	
FX4BNF048		47,000	TDR&TXV	13.50	—	—	—	11.90	
COILS + 58CV(A,X)090-16 VARIABLE-SPEED FURNACE									
		CC5A/CD5AC048	45,500	TDR	—	—	—	13.50	11.80
		CD5AA048	46,000	TDR	—	—	—	14.00	12.00
		CE3AA048	46,500	TDR	—	—	—	14.00	12.05
		CE3AA060	47,000	TDR	—	—	—	14.00	12.40
		CK3BA048	46,500	TDR	—	—	—	14.00	12.10
		CK5A/CK5BA048	46,500	TDR	—	—	—	14.00	12.05
		CK5A/CK5BT048	46,500	TDR	—	—	—	14.00	12.05
	CK5PA048	46,500	TDR&TXV	14.00	—	—	—	12.05	
	CK5PT048	46,500	TDR&TXV	14.00	—	—	—	12.05	
COILS + 58CV(A,X)110-20 VARIABLE-SPEED FURNACE									
	CC5A/CD5AA060	46,000	TDR	—	—	—	14.00	12.00	
	CC5A/CD5AC048	45,500	TDR	—	—	—	13.50	11.75	
	CC5A/CD5AW048	46,000	TDR	—	—	—	14.00	12.00	
	CD5AA048	46,000	TDR	—	—	—	14.00	11.95	
	CD5PX060	47,500	TDR&TXV	14.50	—	—	—	12.45	
	CE3AA048	46,500	TDR	—	—	—	14.00	11.95	
	CE3AA060	47,000	TDR	—	—	—	14.00	12.40	

See notes on pg. 23.

Combination ratings continued

UNIT SIZE-SERIES	INDOOR MODEL	Cooling Capacity	Factory Enhance	SEER				EER	
				Standard Rating	Carrier Gas Furnace or Accessory TDR†	Carrier Gas Furnace or Accessory TDR† and Puron TXV‡	Accessory Puron TXV‡		
048-31	CK3BA048	46,500	TDR	—	—	—	14.00	12.00	
	CK3BA060	47,000	TDR	—	—	—	14.00	12.40	
	CK5A/CK5BA048	46,500	TDR	—	—	—	14.00	12.00	
	CK5A/CK5BA060	47,000	TDR	—	—	—	14.00	12.40	
	CK5A/CK5BT048	46,500	TDR	—	—	—	14.00	12.00	
	CK5A/CK5BT060	47,000	TDR	—	—	—	14.00	12.40	
	CK5A/CK5BW048	46,500	TDR	—	—	—	14.00	12.10	
	CK5A/CK5BX060	47,500	TDR	—	—	—	14.00	12.50	
	CK5PA048	46,500	TDR&TXV	14.00	—	—	—	12.00	
	CK5PA060	47,000	TDR&TXV	14.00	—	—	—	12.40	
	CK5PT048	46,500	TDR&TXV	14.00	—	—	—	12.00	
	CK5PT060	47,000	TDR&TXV	14.00	—	—	—	12.40	
	CK5PW048	46,500	TDR&TXV	14.00	—	—	—	12.10	
	CK5PX060	47,500	TDR&TXV	14.00	—	—	—	12.50	
	COILS + 58CV(A,X)135-22 VARIABLE-SPEED FURNACE								
		CC5A/CD5AA060	46,500	TDR	—	—	—	14.00	12.30
		CC5A/CD5AC048	45,500	TDR	—	—	—	13.50	12.05
		CC5A/CD5AW048	46,500	TDR	—	—	—	14.00	12.25
		CD5AA048	46,500	TDR	—	—	—	14.00	12.25
		CD5PX060	48,500	TDR&TXV	14.50	—	—	—	12.70
		CE3AA048	46,500	TDR	—	—	—	14.00	12.25
		CE3AA060	47,000	TDR	—	—	—	14.00	12.65
		CK3BA048	46,500	TDR	—	—	—	14.00	12.30
		CK3BA060	47,000	TDR	—	—	—	14.00	12.65
		CK5A/CK5BA048	46,500	TDR	—	—	—	14.00	12.25
		CK5A/CK5BA060	47,000	TDR	—	—	—	14.00	12.70
	CK5A/CK5BT048	47,000	TDR	—	—	—	14.00	12.25	
	CK5A/CK5BT060	47,000	TDR	—	—	—	14.00	12.70	
	CK5A/CK5BW048	46,500	TDR	—	—	—	14.00	12.40	
	CK5A/CK5BX060	47,500	TDR	—	—	—	14.00	12.80	
	CK5PA048	46,500	TDR&TXV	14.00	—	—	—	12.25	
	CK5PA060	47,000	TDR&TXV	14.00	—	—	—	12.70	
	CK5PT048	46,500	TDR&TXV	14.00	—	—	—	12.25	
	CK5PT060	47,000	TDR&TXV	14.00	—	—	—	12.70	
	CK5PW048	46,500	TDR&TXV	14.00	—	—	—	12.40	
	CK5PX060	47,500	TDR&TXV	14.00	—	—	—	12.80	
COILS + 58CV(A,X)155-22 VARIABLE-SPEED FURNACE									
	CC5A/CD5AA060	46,500	TDR	—	—	—	14.00	12.40	
	CC5A/CD5AC048	45,500	TDR	—	—	—	13.50	12.15	
	CC5A/CD5AW048	46,500	TDR	—	—	—	14.00	12.40	
	CD5AA048	46,500	TDR	—	—	—	14.00	12.35	
	CD5PX060	47,500	TDR&TXV	14.50	—	—	—	12.80	
	CE3AA048	46,500	TDR	—	—	—	14.00	12.40	
	CE3AA060	47,000	TDR	—	—	—	14.00	12.75	
	CK3BA048	46,500	TDR	—	—	—	14.00	12.40	
	CK3BA060	47,000	TDR	—	—	—	14.00	12.75	
	CK5A/CK5BA048	46,500	TDR	—	—	—	14.00	12.40	
	CK5A/CK5BA060	47,000	TDR	—	—	—	14.00	12.80	
	CK5A/CK5BT048	46,500	TDR	—	—	—	14.00	12.40	
	CK5A/CK5BT060	47,000	TDR	—	—	—	14.00	12.80	
	CK5A/CK5BW048	46,500	TDR	—	—	—	14.00	12.50	
	CK5A/CK5BX060	47,500	TDR	—	—	—	14.00	12.90	
	CK5PA048	46,500	TDR&TXV	14.00	—	—	—	12.40	
	CK5PA060	47,000	TDR&TXV	14.00	—	—	—	12.80	
	CK5PT048	46,500	TDR&TXV	14.00	—	—	—	12.40	
	CK5PT060	47,000	TDR&TXV	14.00	—	—	—	12.80	
	CK5PW048	46,500	TDR&TXV	14.00	—	—	—	12.50	
	CK5PX060	47,500	TDR&TXV	14.00	—	—	—	12.90	
COILS + 58MVP100-20 VARIABLE-SPEED FURNACE									
	CC5A/CD5AA060	46,000	TDR	—	—	—	14.00	12.00	
	CC5A/CD5AC048	45,500	TDR	—	—	—	13.50	11.75	
	CC5A/CD5AW048	46,000	TDR	—	—	—	14.00	12.00	
	CD5AA048	46,000	TDR	—	—	—	14.00	11.95	
	CD5PX060	47,500	TDR&TXV	14.50	—	—	—	12.40	
	CE3AA048	46,500	TDR	—	—	—	14.00	12.00	
	CE3AA060	47,000	TDR	—	—	—	14.00	12.35	
	CK3BA048	46,500	TDR	—	—	—	14.00	12.05	
	CK3BA060	47,000	TDR	—	—	—	14.00	12.35	
	CK5A/CK5BA048	46,500	TDR	—	—	—	14.00	12.00	
	CK5A/CK5BA060	47,000	TDR	—	—	—	14.00	12.35	
	CK5A/CK5BT048	46,500	TDR	—	—	—	14.00	12.00	
	CK5A/CK5BT060	47,000	TDR	—	—	—	14.00	12.35	
	CK5A/CK5BW048	46,500	TDR	—	—	—	14.00	12.10	
	CK5A/CK5BX060	47,500	TDR	—	—	—	14.00	12.50	
	CK5PA048	46,500	TDR&TXV	14.00	—	—	—	12.00	
	CK5PA060	47,000	TDR&TXV	14.00	—	—	—	12.35	
	CK5PT048	46,500	TDR&TXV	14.00	—	—	—	12.00	
	CK5PT060	47,000	TDR&TXV	14.00	—	—	—	12.35	
	CK5PW048	46,500	TDR&TXV	14.00	—	—	—	12.10	
	CK5PX060	47,500	TDR&TXV	14.00	—	—	—	12.50	
COILS + 58MVP120-20 VARIABLE-SPEED FURNACE									
	CC5A/CD5AA060	46,000	TDR	—	—	—	14.00	12.05	

See notes on pg. 23.

Combination ratings continued

UNIT SIZE-SERIES	INDOOR MODEL	Cooling Capacity	Factory Enhance	SEER				EER	
				Standard Rating	Carrier Gas Furnace or Accessory TDR†	Carrier Gas Furnace or Accessory TDR† and Puron TXV‡	Accessory Puron TXV‡		
048-31	CC5A/CD5AC048	45,500	TDR	—	—	—	13.50	11.80	
	CC5A/CD5AW048	46,000	TDR	—	—	—	14.00	12.00	
	CD5AA048	46,000	TDR	—	—	—	14.00	12.00	
	CD5PX060	47,500	TDR&TXV	14.50	—	—	—	12.45	
	CE3AA048	46,500	TDR	—	—	—	14.00	12.05	
	CE3AA060	47,000	TDR	—	—	—	14.00	12.40	
	CK3BA048	46,500	TDR	—	—	—	14.00	12.05	
	CK3BA060	47,000	TDR	—	—	—	14.00	12.40	
	CK5A/CK5BA048	46,500	TDR	—	—	—	14.00	12.05	
	CK5A/CK5BA060	47,000	TDR	—	—	—	14.00	12.40	
	CK5A/CK5BT048	46,500	TDR	—	—	—	14.00	12.05	
	CK5A/CK5BT060	47,000	TDR	—	—	—	14.00	12.40	
	CK5A/CK5BW048	46,500	TDR	—	—	—	14.00	12.15	
	CK5A/CK5BX060	47,500	TDR	—	—	—	14.00	12.50	
	CK5PA048	46,500	TDR&TXV	14.00	—	—	—	12.05	
	CK5PA060	47,000	TDR&TXV	14.00	—	—	—	12.40	
	CK5PT048	46,500	TDR&TXV	14.00	—	—	—	12.05	
	CK5PT060	47,000	TDR&TXV	14.00	—	—	—	12.40	
	CK5PW048	46,500	TDR&TXV	14.00	—	—	—	12.15	
	CK5PX060	47,500	TDR&TXV	14.00	—	—	—	12.50	
060-30	*CD5PX060	58,000	TXV	—	14.00	—	—	12.00	
	CC5A/CD5AA060	56,000	NONE	—	—	13.50	—	11.55	
	CC5A/CD5AW060	57,000	NONE	—	—	13.50	—	11.80	
	CE3AA060	58,000	NONE	—	—	13.50	—	11.95	
	CK3BA060	57,500	NONE	—	—	13.50	—	11.85	
	CK5A/CK5BA060	57,500	NONE	—	—	13.50	—	11.85	
	CK5A/CK5BT060	57,500	NONE	—	—	13.50	—	11.85	
	CK5A/CK5BX060	58,000	NONE	—	—	13.50	—	12.05	
	CK5PA060	57,500	TXV	—	13.50	—	—	11.85	
	CK5PT060	57,500	TXV	—	13.50	—	—	11.85	
	CK5PX060	58,000	TXV	—	13.50	—	—	12.05	
	F(A,B)4BN(F,B,C)060	58,000	TDR	—	—	—	13.50	11.60	
	FB4BNB070	59,000	TDR	—	—	—	14.00	12.00	
	FC4CN(F,B)060	58,000	TDR&TXV	13.50	—	—	—	11.60	
	FC4CNB070	59,000	TDR&TXV	14.00	—	—	—	12.00	
	FE4ANB006	59,000	TDR&TXV	15.00	—	—	—	12.80	
	FG3AAA060	57,000	NONE	—	—	13.50	—	11.65	
	FK4DNB006	59,000	TDR&TXV	15.00	—	—	—	12.80	
	FV4BNB006	59,000	TDR&TXV	15.00	—	—	—	12.80	
	FX4BNB060	58,500	TDR&TXV	14.00	—	—	—	12.00	
	COILS + 58CV(A,X)110-20 VARIABLE-SPEED FURNACE								
	060-30	CC5A/CD5AA060	56,000	TDR	—	—	—	13.50	11.45
		CD5PX060	58,000	TDR&TXV	14.00	—	—	—	11.90
		CE3AA060	58,000	TDR	—	—	—	14.00	11.95
		CK3BA060	57,500	TDR	—	—	—	14.00	11.90
		CK5A/CK5BA060	57,500	TDR	—	—	—	14.00	11.90
		CK5A/CK5BT060	57,500	TDR	—	—	—	14.00	11.90
		CK5A/CK5BX060	58,000	TDR	—	—	—	14.00	12.05
		CK5PA060	57,500	TDR&TXV	14.00	—	—	—	11.90
		CK5PT060	57,500	TDR&TXV	14.00	—	—	—	11.90
CK5PX060		58,000	TDR&TXV	14.00	—	—	—	12.05	
COILS + 58CV(A,X)135-22 VARIABLE-SPEED FURNACE									
060-30		CC5A/CD5AA060	56,000	TDR	—	—	—	14.00	11.80
		CD5PX060	58,000	TDR&TXV	14.50	—	—	—	12.30
		CE3AA060	58,000	TDR	—	—	—	14.00	12.25
	CK3BA060	57,500	TDR	—	—	—	14.00	12.25	
	CK5A/CK5BA060	57,500	TDR	—	—	—	14.00	12.25	
	CK5A/CK5BT060	57,500	TDR	—	—	—	14.00	12.25	
	CK5A/CK5BX060	58,000	TDR	—	—	—	14.00	12.40	
	CK5PA060	57,500	TDR&TXV	14.00	—	—	—	12.25	
	CK5PT060	57,500	TDR&TXV	14.00	—	—	—	12.25	
	CK5PX060	58,000	TDR&TXV	14.00	—	—	—	12.40	
	COILS + 58CV(A,X)155-22 VARIABLE-SPEED FURNACE								
	060-30	CC5A/CD5AA060	56,000	TDR	—	—	—	14.00	11.95
		CD5PX060	58,000	TDR&TXV	14.50	—	—	—	12.40
		CE3AA060	58,000	TDR	—	—	—	14.00	12.40
CK3BA060		57,500	TDR	—	—	—	14.00	12.35	
CK5A/CK5BA060		57,500	TDR	—	—	—	14.00	12.35	
CK5A/CK5BT060		57,500	TDR	—	—	—	14.00	12.35	
CK5A/CK5BX060		58,000	TDR	—	—	—	14.00	12.55	
CK5PA060		57,500	TDR&TXV	14.00	—	—	—	12.35	
CK5PT060		57,500	TDR&TXV	14.00	—	—	—	12.35	
CK5PX060		58,000	TDR&TXV	14.00	—	—	—	12.55	
COILS + 58MVP100-20 VARIABLE-SPEED FURNACE									
060-30		CK5A/CK5BX060	58,000	TDR	—	—	—	14.00	11.90
		CK5PX060	58,000	TDR&TXV	14.00	—	—	—	11.90
COILS + 58MVP120-20 VARIABLE-SPEED FURNACE									
060-30	CK3BA060	57,500	TDR	—	—	—	14.00	11.85	

See notes on pg. 23.

Combination ratings continued

UNIT SIZE-SERIES	INDOOR MODEL	Cooling Capacity	Factory Enhance	SEER				EER
				Standard Rating	Carrier Gas Furnace or Accessory TDR†	Carrier Gas Furnace or Accessory TDR† and Puron TXV‡	Accessory Puron TXV‡	
060-30	CK5A/CK5BA060	57,500	TDR	—	—	—	14.00	11.85
	CK5A/CK5BT060	57,500	TDR	—	—	—	14.00	11.85
	CK5A/CK5BX060	58,000	TDR	—	—	—	14.00	12.00
	CK5PA060	57,500	TDR&TXV	14.00	—	—	—	11.85
	CK5PT060	57,500	TDR&TXV	14.00	—	—	—	11.85
	CK5PX060	58,000	TDR&TXV	14.00	—	—	—	12.00

* Tested combination

† In most cases, only 1 method should be used to achieve TDR function. Using more than 1 method in a system may cause degradation in performance. Use either the accessory Time-Delay Relay KAATD0101TDR or a furnace equipped with TDR. Most Carrier furnaces are equipped with TDR.‡

‡ TXV must be Puron® compatible and hard-shutoff type.

EER — Energy Efficiency Ratio

SEER — Seasonal Energy Efficiency Ratio

TDR — Time-Delay Relay

TXV — Thermostatic Expansion Valve

- NOTES:**
1. Ratings are net values reflecting the effects of circulating fan motor heat. Supplemental electric heat is not included.
 2. Tested outdoor/indoor combinations have been tested in accordance with DOE test procedures for central air conditioners. Ratings for other combinations are determined under DOE computer simulation procedures.
 3. Determine actual CFM values obtainable for your system by referring to fan performance data in fan coil or furnace coil literature.
 4. Do not apply with capillary tube coils as performance and reliability are significantly affected.

Detailed cooling capacities*

EVAP AIR		CONDENSER ENTERING AIR TEMPERATURES °F																	
		75			85			95			105			115			125		
CFM	EWB	Capacity MBtu/h†		Total Sys kW**	Capacity MBtu/h†		Total Sys kW**	Capacity MBtu/h†		Total Sys kW**	Capacity MBtu/h†		Total Sys kW**	Capacity MBtu/h†		Total Sys kW**	Capacity MBtu/h†		Total Sys kW**
		Total	Sens‡		Total	Sens‡		Total	Sens‡		Total	Sens‡		Total	Sens‡		Total	Sens‡	
38TSA024-34 Outdoor Section With CK5PA036 Indoor Section																			
700	57	23.23	23.23	1.50	22.33	22.33	1.71	21.33	21.33	1.94	20.26	20.26	2.18	19.12	19.12	2.46	17.80	17.80	2.74
	62	23.96	21.89	1.50	22.79	21.34	1.71	21.57	20.75	1.94	20.30	20.13	2.18	19.12	19.12	2.46	17.80	17.80	2.74
	67	26.27	18.51	1.50	24.97	17.96	1.72	23.60	17.40	1.95	22.15	16.80	2.20	20.59	16.17	2.47	18.88	15.49	2.76
	72	28.86	15.13	1.51	27.44	14.59	1.73	25.95	14.02	1.96	24.35	13.43	2.21	22.62	12.80	2.48	20.73	12.11	2.77
800	57	24.25	24.25	1.53	23.25	23.25	1.75	22.19	22.19	1.98	21.06	21.06	2.23	19.80	19.80	2.50	18.40	18.40	2.79
	62	24.51	23.56	1.54	23.33	22.95	1.75	22.19	22.19	1.98	21.06	21.06	2.23	19.80	19.80	2.50	18.40	18.40	2.79
	67	26.76	19.73	1.54	25.41	19.18	1.76	23.99	18.60	1.99	22.48	18.00	2.24	20.88	17.36	2.51	19.09	16.65	2.79
	72	29.38	15.89	1.55	27.91	15.34	1.76	26.35	14.77	2.00	24.69	14.17	2.25	22.92	13.53	2.52	20.93	12.82	2.81
900	57	25.08	25.08	1.57	24.04	24.04	1.79	22.91	22.91	2.02	21.69	21.69	2.27	20.36	20.36	2.54	18.88	18.88	2.83
	62	25.06	25.06	1.57	24.04	24.04	1.79	22.91	22.91	2.02	21.69	21.69	2.27	20.36	20.36	2.54	18.88	18.88	2.83
	67	27.13	20.90	1.58	25.74	20.34	1.79	24.29	19.74	2.03	22.76	19.13	2.27	21.08	18.46	2.54	19.25	17.72	2.83
	72	29.77	16.61	1.59	28.25	16.06	1.80	26.65	15.48	2.04	24.95	14.87	2.29	23.10	14.22	2.56	21.05	13.51	2.84

Multipliers for Determining the Performance With Other Indoor Sections

Indoor Section	Size	Cooling		Indoor Section	Size	Cooling		
		Capacity	Power			Capacity	Power	
CC5A/CD5AA	024	0.97	1.01	FK4DNF	001	1.00	0.91	
	030	0.97	0.99		002	1.01	0.91	
	036	1.00	1.01		003	1.02	0.91	
CC5A/CD5AW	024	0.97	1.01	FV4BNF	002	1.01	0.91	
	030	0.97	1.00		003	1.02	0.91	
	036	1.00	1.01	FX4BNF	030	0.99	0.99	
CE3AA	024	0.97	0.99		036	0.99	0.99	
	030	0.97	1.00	COILS + 58CV(A,X)070-12 VARIABLE SPEED FURNACE				
	036	0.99	1.01	CC5A/CD5AA	024	0.97	0.93	
CF5AA	024	0.97	1.01		030	0.97	0.92	
	036	0.99	1.00		036	1.00	0.92	
	CK3BA	024	0.97	0.99	CC5A/CD5AW	024	0.97	0.92
030		0.97	1.00	030		0.97	0.92	
036		1.00	1.00	CE3AA		024	0.97	0.92
CK5A/CK5BA	024	0.97	0.99		030	0.97	0.91	
	030	0.97	1.00		036	1.00	0.93	
	036	1.00	1.00	CK3BA	024	0.97	0.90	
CK5A/CK5BT	036	1.00	1.00		030	0.97	0.90	
	CK5A/CK5BW	024	0.97		0.99	036	1.00	0.92
		030	0.97	1.00	CK5A/CK5BA	024	0.97	0.91
036		1.00	1.00	030		0.97	0.91	
CK5PA	024	0.97	0.99	036		1.00	0.92	
	030	0.97	1.00	CK5A/CK5BT	036	1.00	0.92	
	036	1.00	1.00		CK5A/CK5BW	024	0.97	0.91
CK5PT	036	1.00	1.00			030	0.97	0.91
	CK5PW	024	0.97	0.99		CK5PA	024	0.97
		030	0.97	1.00	030		0.97	0.91
036		1.00	1.00	036	1.00		0.92	
F(A,B)4BN(F,C)	024	0.97	1.00	CK5PT	036	1.00	0.92	
	030	0.99	1.00		CK5PW	024	0.97	0.91
	036	0.99	1.04			030	0.97	0.91
FC4CNF	024	0.97	1.00	COILS + 58CV(A,X)090-16 VARIABLE SPEED FURNACE				
	030	0.99	1.00	CC5A/CD5AA	024	0.97	0.92	
	036	0.99	1.04		030	0.97	0.91	
FE4ANF	002	1.01	0.91		036	1.00	0.91	
	003	1.02	0.91	CC5A/CD5AW	024	0.97	0.91	
FF1DNA	024	0.97	0.99		030	0.97	0.91	
	030	0.99	1.03		036	1.00	0.91	
FF1DNE	024	0.97	0.99	CE3AA	024	0.97	0.91	
	030	0.99	1.03		030	0.97	0.90	
FG3AAA	024	0.95	1.00		036	1.00	0.92	
	036	0.97	1.00	—	—	—		

See notes on pg. 38.

Detailed cooling capacities* continued

EVAP AIR		CONDENSER ENTERING AIR TEMPERATURES °F																	
		75			85			95			105			115			125		
CFM	EWB	Capacity MBtu/h†		Total Sys kW**	Capacity MBtu/h†		Total Sys kW**	Capacity MBtu/h†		Total Sys kW**	Capacity MBtu/h†		Total Sys kW**	Capacity MBtu/h†		Total Sys kW**	Capacity MBtu/h†		Total Sys kW**
		Total	Sens‡		Total	Sens‡		Total	Sens‡		Total	Sens‡		Total	Sens‡		Total	Sens‡	
38TSA024-34 Outdoor Section With CK5PA036 Indoor Section continued																			
700	57	23.23	23.23	1.50	22.33	22.33	1.71	21.33	21.33	1.94	20.26	20.26	2.18	19.12	19.12	2.46	17.80	17.80	2.74
	62	23.96	21.89	1.50	22.79	21.34	1.71	21.57	20.75	1.94	20.30	20.13	2.18	19.12	19.12	2.46	17.80	17.80	2.74
	67	26.27	18.51	1.50	24.97	17.96	1.72	23.60	17.40	1.95	22.15	16.80	2.20	20.59	16.17	2.47	18.88	15.49	2.76
	72	28.86	15.13	1.51	27.44	14.59	1.73	25.95	14.02	1.96	24.35	13.43	2.21	22.62	12.80	2.48	20.73	12.11	2.77
800	57	24.25	24.25	1.53	23.25	23.25	1.75	22.19	22.19	1.98	21.06	21.06	2.23	19.80	19.80	2.50	18.40	18.40	2.79
	62	24.51	23.56	1.54	23.33	22.95	1.75	22.19	22.19	1.98	21.06	21.06	2.23	19.80	19.80	2.50	18.40	18.40	2.79
	67	26.76	19.73	1.54	25.41	19.18	1.76	23.99	18.60	1.99	22.48	18.00	2.24	20.88	17.36	2.51	19.09	16.65	2.79
	72	29.38	15.89	1.55	27.91	15.34	1.76	26.35	14.77	2.00	24.69	14.17	2.25	22.92	13.53	2.52	20.93	12.82	2.81
900	57	25.08	25.08	1.57	24.04	24.04	1.79	22.91	22.91	2.02	21.69	21.69	2.27	20.36	20.36	2.54	18.88	18.88	2.83
	62	25.06	25.06	1.57	24.04	24.04	1.79	22.91	22.91	2.02	21.69	21.69	2.27	20.36	20.36	2.54	18.88	18.88	2.83
	67	27.13	20.90	1.58	25.74	20.34	1.79	24.29	19.74	2.03	22.76	19.13	2.27	21.08	18.46	2.54	19.25	17.72	2.83
	72	29.77	16.61	1.59	28.25	16.06	1.80	26.65	15.48	2.04	24.95	14.87	2.29	23.10	14.22	2.56	21.05	13.51	2.84

Multipliers for Determining the Performance With Other Indoor Sections

Indoor Section	Size	Cooling		Indoor Section	Size	Cooling		
		Capacity	Power			Capacity	Power	
CK3BA	024	0.97	0.89	CE3AA	024	0.97	0.92	
	030	0.97	0.89		030	0.97	0.90	
	036	1.00	0.91		036	1.00	0.92	
CK5A/CK5BA	024	0.97	0.90	CK5A/CK5BW	036	1.00	0.91	
	030	0.97	0.90	CK5PW	036	1.00	0.91	
	036	1.00	0.91	COILS + 58CV(A,X)155-22 VARIABLE SPEED FURNACE				
CK5A/CK5BT	036	1.00	0.91	CC5A/CD5AW	036	1.00	0.91	
CK5A/CK5BW	024	0.97	0.90	CE3AA	024	0.97	0.91	
	030	0.97	0.90		030	0.97	0.90	
	036	1.00	0.91		036	1.00	0.92	
CK5PA	024	0.97	0.90	CK5A/CK5BW	036	1.00	0.91	
	030	0.97	0.90	CK5PW	036	1.00	0.91	
	036	1.00	0.91	COILS + 58MVP040-14 VARIABLE SPEED FURNACE				
CK5PT	036	1.00	0.91	CC5A/CD5AW	036	1.00	0.92	
CK5PW	024	0.97	0.90	CE3AA	024	0.97	0.92	
	030	0.97	0.90		030	0.97	0.91	
	036	1.00	0.91		036	1.00	0.93	
COILS + 58CV(A,X)110-20 VARIABLE SPEED FURNACE				CK5A/CK5BW	036	1.00	0.91	
CC5A/CD5AA	036	1.00	0.92	CK5PW	036	1.00	0.91	
CC5A/CD5AW	024	0.97	0.92	COILS + 58MVP060-14 VARIABLE SPEED FURNACE				
	030	0.97	0.91	CC5A/CD5AA	024	0.97	0.92	
	036	1.00	0.91		030	0.97	0.91	
CE3AA	024	0.97	0.92		CC5A/CD5AW	024	0.97	0.92
	030	0.97	0.91	030		0.97	0.91	
	036	1.00	0.93	036		1.00	0.92	
CK3BA	024	0.97	0.89	CE3AA	024	0.97	0.92	
	030	0.97	0.90		030	0.97	0.91	
	036	1.00	0.91		036	1.00	0.91	
CK5A/CK5BA	036	1.00	0.91	CK3BA	024	0.97	0.90	
CK5A/CK5BT	036	1.00	0.91		030	0.97	0.90	
CK5A/CK5BW	024	0.97	0.91		036	1.00	0.91	
	030	0.97	0.90	CK5A/CK5BA	024	0.97	0.91	
	036	1.00	0.91		030	0.97	0.91	
CK5PA	036	1.00	0.91		036	1.00	0.91	
CK5PT	036	1.00	0.91	CK5A/CK5BT	024	0.97	0.91	
CK5PW	024	0.97	0.91		CK5A/CK5BW	024	0.97	0.91
	030	0.97	0.90			030	0.97	0.90
	036	1.00	0.91	036		1.00	0.91	
COILS + 58CV(A,X)135-22 VARIABLE SPEED FURNACE				—	—	—	—	
CC5A/CD5AW	036	1.00	0.91	—	—	—	—	

See notes on pg. 38.

Detailed cooling capacities* continued

EVAP AIR		CONDENSER ENTERING AIR TEMPERATURES °F																	
		75			85			95			105			115			125		
CFM	EWB	Capacity MBtu/h†		Total Sys kW**	Capacity MBtu/h†		Total Sys kW**	Capacity MBtu/h†		Total Sys kW**	Capacity MBtu/h†		Total Sys kW**	Capacity MBtu/h†		Total Sys kW**	Capacity MBtu/h†		Total Sys kW**
		Total	Sens‡		Total	Sens‡		Total	Sens‡		Total	Sens‡		Total	Sens‡		Total	Sens‡	
38TSA024-34 Outdoor Section With CK5PA036 Indoor Section continued																			
700	57	23.23	23.23	1.50	22.33	22.33	1.71	21.33	21.33	1.94	20.26	20.26	2.18	19.12	19.12	2.46	17.80	17.80	2.74
	62	23.96	21.89	1.50	22.79	21.34	1.71	21.57	20.75	1.94	20.30	20.13	2.18	19.12	19.12	2.46	17.80	17.80	2.74
	67	26.27	18.51	1.50	24.97	17.96	1.72	23.60	17.40	1.95	22.15	16.80	2.20	20.59	16.17	2.47	18.88	15.49	2.76
	72	28.86	15.13	1.51	27.44	14.59	1.73	25.95	14.02	1.96	24.35	13.43	2.21	22.62	12.80	2.48	20.73	12.11	2.77
800	57	24.25	24.25	1.53	23.25	23.25	1.75	22.19	22.19	1.98	21.06	21.06	2.23	19.80	19.80	2.50	18.40	18.40	2.79
	62	24.51	23.56	1.54	23.33	22.95	1.75	22.19	22.19	1.98	21.06	21.06	2.23	19.80	19.80	2.50	18.40	18.40	2.79
	67	26.76	19.73	1.54	25.41	19.18	1.76	23.99	18.60	1.99	22.48	18.00	2.24	20.88	17.36	2.51	19.09	16.65	2.79
	72	29.38	15.89	1.55	27.91	15.34	1.76	26.35	14.77	2.00	24.69	14.17	2.25	22.92	13.53	2.52	20.93	12.82	2.81
900	57	25.08	25.08	1.57	24.04	24.04	1.79	22.91	22.91	2.02	21.69	21.69	2.27	20.36	20.36	2.54	18.88	18.88	2.83
	62	25.06	25.06	1.57	24.04	24.04	1.79	22.91	22.91	2.02	21.69	21.69	2.27	20.36	20.36	2.54	18.88	18.88	2.83
	67	27.13	20.90	1.58	25.74	20.34	1.79	24.29	19.74	2.03	22.76	19.13	2.27	21.08	18.46	2.54	19.25	17.72	2.83
	72	29.77	16.61	1.59	28.25	16.06	1.80	26.65	15.48	2.04	24.95	14.87	2.29	23.10	14.22	2.56	21.05	13.51	2.84

Multipliers for Determining the Performance With Other Indoor Sections

Indoor Section	Size	Cooling		Indoor Section	Size	Cooling		
		Capacity	Power			Capacity	Power	
CK5PA	024	0.97	0.91	CK5A/CK5BA	036	1.00	0.91	
	030	0.97	0.91		CK5A/CK5BT	036	1.00	0.91
	036	1.00	0.91		CK5A/CK5BW	024	0.97	0.91
CK5PT	036	1.00	0.91	030		0.97	0.90	
	CK5PW	024	0.97	0.91	CK5PA	036	1.00	0.91
030		0.97	0.90	CK5PT		036	1.00	0.91
036		1.00	0.91	CK5PW		024	0.97	0.91
COILS + 58MVP080-14 VARIABLE SPEED FURNACE					CC5A/CD5AA	030	0.97	0.90
CC5A/CD5AA	036	1.00	0.92			COILS + 58MVP100-20 VARIABLE SPEED FURNACE	036	1.00
CC5A/CD5AW	024	0.97	0.92	CC5A/CD5AA			036	1.00
CE3AA	024	0.97	0.92	CC5A/CD5AW	024	0.97	0.92	
	030	0.97	0.91		030	0.97	0.91	
	036	1.00	0.93		036	1.00	0.91	
CK3BA	024	0.97	0.90	CE3AA	024	0.97	0.92	
	030	0.97	0.90		030	0.97	0.91	
	036	1.00	0.92		036	1.00	0.92	
CK5A/CK5BA	036	1.00	0.92	CK3BA	024	0.97	0.89	
CK5A/CK5BT	036	1.00	0.92		030	0.97	0.90	
CK5A/CK5BW	024	0.97	0.91		036	1.00	0.91	
	030	0.97	0.91	CK5A/CK5BA	036	1.00	0.91	
	036	1.00	0.91	CK5A/CK5BT	036	1.00	0.91	
CK5PA	036	1.00	0.92	CK5A/CK5BW	024	0.97	0.91	
CK5PT	036	1.00	0.92		030	0.97	0.90	
CK5PW	024	0.97	0.91		036	1.00	0.91	
	030	0.97	0.91	CK5PA	036	1.00	0.91	
	036	1.00	0.91	CK5PT	036	1.00	0.91	
COILS + 58MVP080-20 VARIABLE SPEED FURNACE				CK5PW	024	0.97	0.91	
CC5A/CD5AA	036	1.00	0.92		030	0.97	0.90	
CC5A/CD5AW	024	0.97	0.92		036	1.00	0.91	
CE3AA	024	0.97	0.92	COILS + 58MVP120-20 VARIABLE SPEED FURNACE				
	030	0.97	0.91	CC5A/CD5AW	036	1.00	0.92	
	036	1.00	0.93		024	0.97	0.92	
CK3BA	024	0.97	0.90		CE3AA	030	0.97	0.91
	030	0.97	0.90	036		1.00	0.93	
	036	1.00	0.91	CK5A/CK5BW		036	1.00	0.91
				CK5PW	036	1.00	0.91	
					—	—	—	
					—	—	—	

See notes on pg. 38.

Detailed cooling capacities* continued

EVAP AIR		CONDENSER ENTERING AIR TEMPERATURES °F																	
		75			85			95			105			115			125		
CFM	EWB	Capacity MBtu/h†		Total Sys kW**	Capacity MBtu/h†		Total Sys kW**	Capacity MBtu/h†		Total Sys kW**	Capacity MBtu/h†		Total Sys kW**	Capacity MBtu/h†		Total Sys kW**	Capacity MBtu/h†		Total Sys kW**
		Total	Sens‡		Total	Sens‡		Total	Sens‡		Total	Sens‡		Total	Sens‡		Total	Sens‡	
38TSA030-33 Outdoor Section With CK5PA042 Indoor Section																			
875	72	35.9	17.8	2.00	34.1	17.2	2.21	32.0	16.4	2.44	29.7	15.6	2.70	27.4	14.8	2.98	25.2	14.0	3.29
	67	33.1	22.7	1.99	31.5	22.1	2.20	29.8	21.4	2.44	28.0	20.7	2.70	26.1	19.9	2.98	23.9	19.1	3.29
	63††	30.8	22.1	1.98	29.3	21.4	2.19	27.7	20.7	2.43	26.1	20.0	2.69	24.2	19.2	2.97	22.5	18.5	3.29
	62	30.4	27.5	1.98	29.1	26.9	2.19	27.6	26.2	2.43	26.1	25.4	2.69	24.4	24.4	2.98	22.8	22.8	3.29
	57	29.6	29.6	1.98	28.4	28.4	2.19	27.1	27.1	2.42	25.8	25.8	2.68	24.3	24.3	2.97	22.9	22.9	3.29
1000	72	36.5	18.6	2.05	34.4	17.9	2.26	32.1	17.1	2.49	29.6	16.2	2.74	27.7	15.5	3.02	25.4	14.8	3.34
	67	33.7	24.1	2.04	32.0	23.5	2.25	30.0	22.7	2.48	28.1	21.9	2.74	26.1	21.1	3.02	23.8	20.3	3.33
	63††	31.3	23.4	2.03	29.8	22.7	2.24	28.1	22.0	2.47	26.4	21.3	2.73	24.5	20.5	3.02	22.8	19.8	3.34
	62	31.0	29.5	2.03	29.8	28.8	2.24	28.3	28.0	2.48	26.8	26.8	2.74	25.2	25.2	3.03	23.5	23.5	3.34
	57	30.7	30.7	2.03	29.4	29.4	2.24	28.1	28.1	2.47	26.6	26.6	2.74	25.0	25.0	3.02	23.5	23.5	3.34
1125	72	36.7	19.3	2.10	34.5	18.5	2.30	32.1	17.7	2.53	29.9	16.9	2.79	27.8	16.2	3.07	25.6	15.5	3.38
	67	33.9	25.4	2.09	32.1	24.7	2.30	30.1	23.9	2.53	28.1	23.1	2.78	26.0	22.3	3.07	23.6	21.4	3.37
	63††	31.7	24.7	2.08	30.1	24.0	2.29	28.4	23.3	2.52	26.7	22.5	2.78	24.8	21.7	3.07	23.0	20.9	3.39
	62	31.7	31.2	2.08	30.2	30.2	2.29	28.8	28.8	2.52	27.5	27.5	2.79	25.9	25.9	3.08	24.0	24.0	3.39
	57	31.6	31.6	2.08	30.3	30.3	2.29	28.9	28.9	2.53	27.4	27.4	2.79	25.7	25.7	3.07	24.1	24.1	3.39

Multipliers for Determining the Performance With Other Indoor Sections

Indoor Section	Size	Cooling		Indoor Section	Size	Cooling		
		Capacity	Power			Capacity	Power	
CC5A/CD5AA	030	0.97	1.00	FV4(A,B)NF	002	0.99	0.91	
	036	0.99	0.99		003	0.99	0.88	
	042	1.00	1.00		005	1.00	0.86	
CC5A/CD5AW	030	0.97	1.00	FX4(A,B)NF	030	0.97	0.96	
	036	0.99	0.99		036	0.99	1.00	
	042	1.00	1.01		042	1.00	1.02	
CE3AA	030	0.97	0.99	COILS + 58CV(A,X)070-12 VARIABLE SPEED FURNACE				
	036	0.99	1.00	CC5A/CD5AA	030	0.97	0.92	
	042	1.00	1.00		036	0.99	0.91	
CF5AA	036	0.99	0.99	CC5A/CD5AW	030	0.97	0.92	
CK3BA	030	0.97	1.00	CE3AA	030	0.97	0.92	
	036	0.99	0.99		036	0.99	0.93	
	042	1.00	1.00		030	0.97	0.92	
CK5A/CK5BA	030	0.97	1.00	CK3BA	036	0.99	0.91	
	036	0.99	0.99		030	0.97	0.92	
	042	1.00	1.00		036	0.99	0.91	
CK5A/CK5BT	036	0.99	0.99	CK5A/CK5BA	030	0.97	0.92	
	042	1.00	1.00		036	0.99	0.91	
	036	0.99	0.99		030	0.97	0.92	
CK5A/CK5BW	030	0.97	1.00	CK5A/CK5BT	036	0.99	0.91	
	036	0.99	0.99		030	0.97	0.92	
	042	1.00	1.00		036	0.99	0.91	
CK5PA	030	0.97	1.00	CK5A/CK5BW	030	0.97	0.92	
	036	0.99	0.99		036	0.99	0.91	
	042	1.00	1.00		036	0.99	0.91	
CK5PT	036	0.99	0.99	CK5PT	036	0.99	0.91	
	042	1.00	1.00		CK5PW	030	0.97	0.92
	030	0.97	1.00			COILS + 58CV(A,X)090-16 VARIABLE SPEED FURNACE		
CK5PW	036	0.99	0.99	CK5PW	036	0.99	0.91	
	042	1.00	1.00		030	0.97	0.92	
	030	0.97	1.00		042	1.00	0.91	
F(A,B)4(A,B)N(F,B,C)	042	1.00	1.03	CC5A/CD5AA	030	0.97	0.91	
	F(A,B)4(A,B)N(F,C)	030	0.97		0.97	036	0.99	0.90
		036	0.99		1.02	042	1.00	0.91
FC4(B,C)N(F,B)	042	1.00	1.03	CC5A/CD5AW	030	0.97	0.91	
	FC4(B,C)NF	030	0.97		0.97	036	0.99	0.90
		036	0.99		1.02	042	1.00	0.91
FE4ANF	002	0.99	0.91	CE3AA	030	0.97	0.90	
	003	0.99	0.88		036	0.99	0.91	
	005	1.00	0.86		042	1.00	0.91	
FF1DNA	030	0.97	0.98	CK3BA	030	0.97	0.91	
FG3AAA	036	0.99	1.01		036	0.99	0.90	
		0.99	1.01		042	1.00	0.91	
		0.99	1.01	042	1.00	0.91		
FK4(C,D)NF	001	0.97	0.90	CK5A/CK5BT	042	1.00	0.91	
	002	0.99	0.91		CK5A/CK5BW	030	0.97	0.91
	003	0.99	0.95			036	0.99	0.90
	005	1.00	0.86			—	—	—

See notes on pg. 38.

Detailed cooling capacities* continued

EVAP AIR		CONDENSER ENTERING AIR TEMPERATURES °F																	
		75			85			95			105			115			125		
CFM	EWB	Capacity MBtu/h†		Total Sys kW**	Capacity MBtu/h†		Total Sys kW**	Capacity MBtu/h†		Total Sys kW**	Capacity MBtu/h†		Total Sys kW**	Capacity MBtu/h†		Total Sys kW**	Capacity MBtu/h†		Total Sys kW**
		Total	Sens‡		Total	Sens‡		Total	Sens‡		Total	Sens‡		Total	Sens‡		Total	Sens‡	
38TSA030-33 Outdoor Section With CK5PA042 Indoor Section continued																			
875	72	35.9	17.8	2.00	34.1	17.2	2.21	32.0	16.4	2.44	29.7	15.6	2.70	27.4	14.8	2.98	25.2	14.0	3.29
	67	33.1	22.7	1.99	31.5	22.1	2.20	29.8	21.4	2.44	28.0	20.7	2.70	26.1	19.9	2.98	23.9	19.1	3.29
	63††	30.8	22.1	1.98	29.3	21.4	2.19	27.7	20.7	2.43	26.1	20.0	2.69	24.2	19.2	2.97	22.5	18.5	3.29
	62	30.4	27.5	1.98	29.1	26.9	2.19	27.6	26.2	2.43	26.1	25.4	2.69	24.4	24.4	2.98	22.8	22.8	3.29
	57	29.6	29.6	1.98	28.4	28.4	2.19	27.1	27.1	2.42	25.8	25.8	2.68	24.3	24.3	2.97	22.9	22.9	3.29
1000	72	36.5	18.6	2.05	34.4	17.9	2.26	32.1	17.1	2.49	29.6	16.2	2.74	27.7	15.5	3.02	25.4	14.8	3.34
	67	33.7	24.1	2.04	32.0	23.5	2.25	30.0	22.7	2.48	28.1	21.9	2.74	26.1	21.1	3.02	23.8	20.3	3.33
	63††	31.3	23.4	2.03	29.8	22.7	2.24	28.1	22.0	2.47	26.4	21.3	2.73	24.5	20.5	3.02	22.8	19.8	3.34
	62	31.0	29.5	2.03	29.8	28.8	2.24	28.3	28.0	2.48	26.8	26.8	2.74	25.2	25.2	3.03	23.5	23.5	3.34
	57	30.7	30.7	2.03	29.4	29.4	2.24	28.1	28.1	2.47	26.6	26.6	2.74	25.0	25.0	3.02	23.5	23.5	3.34
1125	72	36.7	19.3	2.10	34.5	18.5	2.30	32.1	17.7	2.53	29.9	16.9	2.79	27.8	16.2	3.07	25.6	15.5	3.38
	67	33.9	25.4	2.09	32.1	24.7	2.30	30.1	23.9	2.53	28.1	23.1	2.78	26.0	22.3	3.07	23.6	21.4	3.37
	63††	31.7	24.7	2.08	30.1	24.0	2.29	28.4	23.3	2.52	26.7	22.5	2.78	24.8	21.7	3.07	23.0	20.9	3.39
	62	31.7	31.2	2.08	30.2	30.2	2.29	28.8	28.8	2.52	27.5	27.5	2.79	25.9	25.9	3.08	24.0	24.0	3.39
	57	31.6	31.6	2.08	30.3	30.3	2.29	28.9	28.9	2.53	27.4	27.4	2.79	25.7	25.7	3.07	24.1	24.1	3.39

Multipliers for Determining the Performance With Other Indoor Sections

Indoor Section	Size	Cooling		Indoor Section	Size	Cooling	
		Capacity	Power			Capacity	Power
CK5PA	030	0.97	0.91	CE3AA	036	0.99	0.89
	036	0.99	0.90	CK5A/CK5BW	036	0.99	0.87
	042	1.00	0.91	CK5PW	036	0.99	0.87
CK5PT	036	0.99	0.90	COILS + 58CV(A,X)155-22 VARIABLE SPEED FURNACE			
	042	1.00	0.91	CC5A/CD5AW	036	0.99	0.87
CK5PW	030	0.97	0.91	CE3AA	030	0.97	0.76
	036	0.99	0.90		036	0.99	0.89
COILS + 58CV(A,X)110-20 VARIABLE SPEED FURNACE				CK5A/CK5BW	036	0.99	0.87
CC5A/CD5AA	036	0.99	0.89	CK5PW	036	0.99	0.75
	042	1.00	0.90		COILS + 58MVP040-14 VARIABLE SPEED FURNACE		
CC5A/CD5AW	030	0.97	0.90	CC5A/CD5AA	042	1.00	0.93
	036	0.99	0.89	CC5A/CD5AW	030	0.97	0.95
	042	1.00	0.90	036	0.99	0.93	
CE3AA	030	0.97	0.89	CK5A/CK5BA	042	1.00	0.93
	036	0.99	0.90	CK5A/CK5BW	030	0.97	0.95
	042	1.00	0.89	036	0.99	0.93	
CK3BA	030	0.97	0.88	CK5PA	042	1.00	0.93
	036	0.99	0.89		030	0.97	0.95
	042	1.00	0.89		036	0.99	0.93
CK5A/CK5BA	036	0.99	0.89	COILS + 58MVP060-14 VARIABLE SPEED FURNACE			
	042	1.00	0.89	CC5A/CD5AA	036	0.99	0.93
CK5A/CK5BE	042	1.00	0.92	CC5A/CD5AW	030	0.97	0.95
CK5A/CK5BT	036	0.99	0.89	CK3BA	030	0.97	0.94
	042	1.00	0.89		036	0.99	0.93
CK5A/CK5BW	030	0.97	0.89		042	1.00	0.93
	036	0.99	0.88	CK5A/CK5BA	036	0.99	0.93
CK5PA	036	0.99	0.89	CK5A/CK5BW	030	0.97	0.94
	042	1.00	0.89	CK5PA	036	0.99	0.93
CK5PE	042	1.00	0.89	CK5PW	030	0.97	0.94
CK5PT	036	0.99	0.89	COILS + 58MVP080-14 VARIABLE SPEED FURNACE			
	042	1.00	0.89	CC5A/CD5AA	042	1.00	0.92
CK5PW	030	0.97	0.89	CC5A/CD5AW	030	0.97	0.94
	036	0.99	0.88	036	0.99	0.92	
COILS + 58CV(A,X)135-22 VARIABLE SPEED FURNACE				CK5A/CK5BA	042	1.00	0.92
CC5A/CD5AW	036	0.99	0.88	CK5A/CK5BW	030	0.97	0.94
CE3AA	030	0.97	0.88		036	0.99	0.91

See notes on pg. 38.

Detailed cooling capacities* continued

EVAP AIR		CONDENSER ENTERING AIR TEMPERATURES °F																		
		75			85			95			105			115			125			
CFM	EWB	Capacity MBtu/h†		Total Sys kW**	Capacity MBtu/h†		Total Sys kW**	Capacity MBtu/h†		Total Sys kW**	Capacity MBtu/h†		Total Sys kW**	Capacity MBtu/h†		Total Sys kW**	Capacity MBtu/h†		Total Sys kW**	
		Total	Sens‡		Total	Sens‡		Total	Sens‡		Total	Sens‡		Total	Sens‡		Total	Sens‡		
38TSA030-33 Outdoor Section With CK5PA042 Indoor Section continued																				
875	72	35.9	17.8	2.00	34.1	17.2	2.21	32.0	16.4	2.44	29.7	15.6	2.70	27.4	14.8	2.98	25.2	14.0	3.29	
	67	33.1	22.7	1.99	31.5	22.1	2.20	29.8	21.4	2.44	28.0	20.7	2.70	26.1	19.9	2.98	23.9	19.1	3.29	
	63††	30.8	22.1	1.98	29.3	21.4	2.19	27.7	20.7	2.43	26.1	20.0	2.69	24.2	19.2	2.97	22.5	18.5	3.29	
	62	30.4	27.5	1.98	29.1	26.9	2.19	27.6	26.2	2.43	26.1	25.4	2.69	24.4	24.4	2.98	22.8	22.8	3.29	
	57	29.6	29.6	1.98	28.4	28.4	2.19	27.1	27.1	2.42	25.8	25.8	2.68	24.3	24.3	2.97	22.9	22.9	3.29	
1000	72	36.5	18.6	2.05	34.4	17.9	2.26	32.1	17.1	2.49	29.6	16.2	2.74	27.7	15.5	3.02	25.4	14.8	3.34	
	67	33.7	24.1	2.04	32.0	23.5	2.25	30.0	22.7	2.48	28.1	21.9	2.74	26.1	21.1	3.02	23.8	20.3	3.33	
	63††	31.3	23.4	2.03	29.8	22.7	2.24	28.1	22.0	2.47	26.4	21.3	2.73	24.5	20.5	3.02	22.8	19.8	3.34	
	62	31.0	29.5	2.03	29.8	28.8	2.24	28.3	28.0	2.48	26.8	26.8	2.74	25.2	25.2	3.03	23.5	23.5	3.34	
	57	30.7	30.7	2.03	29.4	29.4	2.24	28.1	28.1	2.47	26.6	26.6	2.74	25.0	25.0	3.02	23.5	23.5	3.34	
1125	72	36.7	19.3	2.10	34.5	18.5	2.30	32.1	17.7	2.53	29.9	16.9	2.79	27.8	16.2	3.07	25.6	15.5	3.38	
	67	33.9	25.4	2.09	32.1	24.7	2.30	30.1	23.9	2.53	28.1	23.1	2.78	26.0	22.3	3.07	23.6	21.4	3.37	
	63††	31.7	24.7	2.08	30.1	24.0	2.29	28.4	23.3	2.52	26.7	22.5	2.78	24.8	21.7	3.07	23.0	20.9	3.39	
	62	31.7	31.2	2.08	30.2	30.2	2.29	28.8	28.8	2.52	27.5	27.5	2.79	25.9	25.9	3.08	24.0	24.0	3.39	
	57	31.6	31.6	2.08	30.3	30.3	2.29	28.9	28.9	2.53	27.4	27.4	2.79	25.7	25.7	3.07	24.1	24.1	3.39	

Multipliers for Determining the Performance With Other Indoor Sections

Indoor Section	Size	Cooling		Indoor Section	Size	Cooling	
		Capacity	Power			Capacity	Power
CK5PA	030	0.97	0.91	COILS + 58MVP100-20 VARIABLE SPEED FURNACE			
	036	0.99	0.90	CC5A/CD5AA	042	1.00	0.91
	042	1.00	0.91		CC5A/CD5AW	030	0.97
CK5PT	036	0.99	0.90	CK3BA		036	0.99
	042	1.00	0.91		042	1.00	0.90
CK5PW	030	0.97	0.91	CK5A/CK5BA	042	1.00	0.90
	036	0.99	0.90		CK5A/CK5BW	030	0.97
CK5PA	042	1.00	0.92	CK5A/CK5BW		036	0.99
CK5PW	030	0.97	0.94		CK5PA	042	1.00
	036	0.99	0.91	CK5PW		030	0.97
COILS + 58MVP080-20 VARIABLE SPEED FURNACE					CK5PW	036	0.99
CC5A/CD5AA	042	1.00	0.93	COILS + 58MVP120-20 VARIABLE SPEED FURNACE			
CC5A/CD5AW	030	0.97	0.95	CC5A/CD5AA	042	1.00	0.91
	036	0.99	0.93	CC5A/CD5AW	036	0.99	0.90
CK3BA	042	1.00	0.93	CK5A/CK5BA	042	1.00	0.91
CK5A/CK5BA	042	1.00	0.93	CK5A/CK5BW	036	0.99	0.90
CK5A/CK5BW	030	0.97	0.95	CK5PA	042	1.00	0.91
	036	0.99	0.93		CK5PW	036	0.99
CK5PA	042	1.00	0.93				
CK5PW	030	0.97	0.95				
	036	0.99	0.93				

See notes on pg. 38.

Detailed cooling capacities* continued

EVAP AIR		CONDENSER ENTERING AIR TEMPERATURES °F																	
		75			85			95			105			115			125		
CFM	EWB	Capacity MBtu/h†		Total Sys kW**	Capacity MBtu/h†		Total Sys kW**	Capacity MBtu/h†		Total Sys kW**	Capacity MBtu/h†		Total Sys kW**	Capacity MBtu/h†		Total Sys kW**	Capacity MBtu/h†		Total Sys kW**
		Total	Sens‡		Total	Sens‡		Total	Sens‡		Total	Sens‡		Total	Sens‡		Total	Sens‡	
38TSA036-33 Outdoor Section With CK5PA048 Indoor Section																			
1050	72	43.0	21.2	2.37	40.7	20.3	2.64	38.0	19.4	2.93	35.2	18.4	3.24	32.5	17.4	3.59	29.5	16.4	3.96
	67	39.5	26.9	2.37	37.6	26.1	2.64	35.6	25.3	2.93	33.4	24.4	3.26	31.0	23.4	3.60	28.3	22.4	3.97
	63††	36.9	26.2	2.37	35.1	25.4	2.64	33.2	24.6	2.93	31.2	23.7	3.25	28.9	22.7	3.59	26.4	21.6	3.96
	62	36.5	32.6	2.37	34.7	31.7	2.64	32.9	30.9	2.93	30.9	29.9	3.25	28.9	28.8	3.59	26.7	26.7	3.96
	57	35.4	35.4	2.37	33.9	33.9	2.64	32.4	32.4	2.93	30.8	30.8	3.25	28.9	28.9	3.59	26.8	26.8	3.96
1200	72	43.6	22.1	2.42	41.1	21.2	2.69	38.4	20.2	2.98	35.4	19.2	3.29	32.7	18.2	3.64	30.1	17.3	4.02
	67	40.1	28.5	2.42	38.1	27.7	2.69	36.0	26.8	2.99	33.7	25.9	3.31	31.2	25.0	3.65	28.4	23.9	4.02
	63††	37.5	27.7	2.42	35.6	26.9	2.69	33.6	26.0	2.98	31.5	25.1	3.30	29.1	24.1	3.65	26.5	23.0	4.01
	62	37.1	34.8	2.42	35.4	33.9	2.69	33.6	33.0	2.98	31.7	31.7	3.30	29.7	29.7	3.65	27.4	27.4	4.02
	57	36.6	36.6	2.42	35.1	35.1	2.69	33.5	33.5	2.99	31.7	31.7	3.31	29.8	29.8	3.65	27.5	27.5	4.02
1350	72	44.0	22.9	2.48	41.4	22.0	2.74	38.6	21.0	3.03	35.6	19.9	3.35	33.2	19.1	3.70	30.5	18.2	4.08
	67	40.5	29.9	2.48	38.5	29.1	2.74	36.3	28.3	3.04	33.9	27.4	3.36	31.4	26.4	3.71	28.5	25.3	4.08
	63††	37.9	29.1	2.48	36.0	28.3	2.74	33.9	27.4	3.04	31.7	26.4	3.36	29.3	25.4	3.70	26.6	24.3	4.06
	62	37.8	36.8	2.48	36.1	35.8	2.74	34.3	34.3	3.04	32.4	32.4	3.36	30.3	30.3	3.70	27.9	27.9	4.07
	57	37.7	37.7	2.48	36.1	36.1	2.74	34.4	34.4	3.04	32.5	32.5	3.36	30.4	30.4	3.71	28.0	28.0	4.08

Multipliers for Determining the Performance With Other Indoor Sections

Indoor Section	Size	Cooling		Indoor Section	Size	Cooling		
		Capacity	Power			Capacity	Power	
CC5A/CD5AA	036	0.97	0.98	FG3AAA	036	0.97	1.00	
	042	0.99	1.00		048	1.00	1.00	
CC5A/CD5AC	048	0.99	1.01	FK4(C,D)NB	006	1.01	0.86	
CC5A/CD5AW	036	0.97	0.98	FK4(C,D)NF	001	0.97	0.94	
	042	0.99	1.01		002	0.99	0.95	
	048	1.00	1.00		003	0.99	0.91	
CD5AA	048	1.00	1.00		005	1.00	0.88	
CE3AA	036	0.97	0.99		FV4(A,B)NB	006	1.01	0.86
	042	0.99	0.99	FV4(A,B)NF		002	0.99	0.95
	048	1.00	1.00		003	0.99	0.91	
CF5AA	036	0.97	0.98		FX4(A,B)NF	005	1.00	0.88
	048	1.00	1.00	036		0.97	1.00	
CK3BA	036	0.97	0.98	042		0.99	0.98	
	042	0.99	1.00			048	1.00	0.99
	048	1.00	1.00				0.99	
CK5A/CK5BA	036	0.97	0.98	COILS + 58CV(A,X)070-12 VARIABLE SPEED FURNACE				
	042	0.99	1.00	CC5A/CD5AA	036	0.97	0.93	
	048	1.00	1.00	CE3AA	036	0.97	0.93	
CK5A/CK5BE	042	1.00	1.00	CK3BA	036	0.97	0.92	
CK5A/CK5BT	036	0.97	0.98	CK5A/CK5BA	036	0.97	0.92	
	042	0.99	1.00	CK5A/CK5BE	042	0.99	0.93	
	048	1.00	1.00	CK5A/CK5BT	036	0.97	0.92	
CK5A/CK5BW	036	0.97	0.98	CK5PA	036	0.97	0.92	
	048	1.00	1.00	CK5PE	042	0.99	0.93	
CK5PA	036	0.97	0.98	CK5PT	036	0.97	0.92	
	042	0.99	1.00	COILS + 58CV(A,X)090-16 VARIABLE SPEED FURNACE				
	048	1.00	1.00	CC5A/CD5AA	036	0.97	0.91	
CK5PT	036	0.97	0.98	042	0.99	0.91		
	042	0.99	1.00	CC5A/CD5AC	048	1.00	0.93	
	048	1.00	1.00	CC5A/CD5AW	036	0.97	0.91	
CK5PW	036	0.97	0.98	CD5AA	048	1.00	0.94	
	048	1.00	1.00	CE3AA	036	0.97	0.92	
F(A,B)4(A,B)N(F,B,C)	042	0.99	1.00		042	0.99	0.92	
	048	1.00	1.01		048	1.00	0.92	
F(A,B)4(A,B)N(F,C)	036	0.97	1.01	CK3BA	036	0.97	0.90	
FC4(B,C)N(F,B)	042	0.99	1.00		042	0.99	0.92	
	048	1.00	1.01		048	1.00	0.92	
FC4(B,C)NB	054	1.00	0.95	CK5A/CK5BA	036	0.97	0.90	
FC4(B,C)NF	036	0.97	1.01		042	0.99	0.92	
FE4ANB	006	1.01	0.86		048	1.00	0.92	
FE4ANF	002	0.99	0.95	CK5A/CK5BE	042	0.99	0.91	
	003	0.99	0.91		—	—	—	
	005	1.00	0.88		—	—	—	

See notes on pg. 38.

Detailed cooling capacities* continued

EVAP AIR		CONDENSER ENTERING AIR TEMPERATURES °F																	
		75			85			95			105			115			125		
CFM	EWB	Capacity MBtu/h†		Total Sys kW**	Capacity MBtu/h†		Total Sys kW**	Capacity MBtu/h†		Total Sys kW**	Capacity MBtu/h†		Total Sys kW**	Capacity MBtu/h†		Total Sys kW**	Capacity MBtu/h†		Total Sys kW**
		Total	Sens‡		Total	Sens‡		Total	Sens‡		Total	Sens‡		Total	Sens‡		Total	Sens‡	
38TSA036-33 Outdoor Section With CK5PA048 Indoor Section continued																			
1050	72	43.0	21.2	2.37	40.7	20.3	2.64	38.0	19.4	2.93	35.2	18.4	3.24	32.5	17.4	3.59	29.5	16.4	3.96
	67	39.5	26.9	2.37	37.6	26.1	2.64	35.6	25.3	2.93	33.4	24.4	3.26	31.0	23.4	3.60	28.3	22.4	3.97
	63††	36.9	26.2	2.37	35.1	25.4	2.64	33.2	24.6	2.93	31.2	23.7	3.25	28.9	22.7	3.59	26.4	21.6	3.96
	62	36.5	32.6	2.37	34.7	31.7	2.64	32.9	30.9	2.93	30.9	29.9	3.25	28.9	28.8	3.59	26.7	26.7	3.96
	57	35.4	35.4	2.37	33.9	33.9	2.64	32.4	32.4	2.93	30.8	30.8	3.25	28.9	28.9	3.59	26.8	26.8	3.96
1200	72	43.6	22.1	2.42	41.1	21.2	2.69	38.4	20.2	2.98	35.4	19.2	3.29	32.7	18.2	3.64	30.1	17.3	4.02
	67	40.1	28.5	2.42	38.1	27.7	2.69	36.0	26.8	2.99	33.7	25.9	3.31	31.2	25.0	3.65	28.4	23.9	4.02
	63††	37.5	27.7	2.42	35.6	26.9	2.69	33.6	26.0	2.98	31.5	25.1	3.30	29.1	24.1	3.65	26.5	23.0	4.01
	62	37.1	34.8	2.42	35.4	33.9	2.69	33.6	33.0	2.98	31.7	31.7	3.30	29.7	29.7	3.65	27.4	27.4	4.02
	57	36.6	36.6	2.42	35.1	35.1	2.69	33.5	33.5	2.99	31.7	31.7	3.31	29.8	29.8	3.65	27.5	27.5	4.02
1350	72	44.0	22.9	2.48	41.4	22.0	2.74	38.6	21.0	3.03	35.6	19.9	3.35	33.2	19.1	3.70	30.5	18.2	4.08
	67	40.5	29.9	2.48	38.5	29.1	2.74	36.3	28.3	3.04	33.9	27.4	3.36	31.4	26.4	3.71	28.5	25.3	4.08
	63††	37.9	29.1	2.48	36.0	28.3	2.74	33.9	27.4	3.04	31.7	26.4	3.36	29.3	25.4	3.70	26.6	24.3	4.06
	62	37.8	36.8	2.48	36.1	35.8	2.74	34.3	34.3	3.04	32.4	32.4	3.36	30.3	30.3	3.70	27.9	27.9	4.07
	57	37.7	37.7	2.48	36.1	36.1	2.74	34.4	34.4	3.04	32.5	32.5	3.36	30.4	30.4	3.71	28.0	28.0	4.08

Multipliers for Determining the Performance With Other Indoor Sections

Indoor Section	Size	Cooling		Indoor Section	Size	Cooling			
		Capacity	Power			Capacity	Power		
CK5A/CK5BT	036	0.97	0.90	CK5PW	036	0.97	0.90		
	042	0.99	0.92		048	1.00	0.91		
	048	1.00	0.92		COILS + 58CV(A,X)135-22 VARIABLE SPEED FURNACE				
CK5A/CK5BW	036	0.97	0.90	CC5A/CD5AA	042	0.99	0.91		
CK5PA	036	0.97	0.90	CC5A/CD5AC	048	1.00	0.92		
	042	0.99	0.92		CC5A/CD5AW	036	0.97	0.91	
	048	1.00	0.92			042	0.99	0.92	
CK5PE	042	0.99	0.91	048	1.00	0.91			
CK5PT	036	0.97	0.90	CD5AA	048	1.00	0.91		
	042	0.99	0.92		CE3AA	036	0.97	0.92	
	048	1.00	0.92			042	0.99	0.91	
CK5PW	036	0.97	0.90	048	1.00	0.92			
COILS + 58CV(A,X)110-20 VARIABLE SPEED FURNACE				CK3BA	042	0.99	0.91		
CC5A/CD5AA	036	0.97	0.93		048	1.00	0.91		
	042	0.99	0.92		CK5A/CK5BA	042	0.99	0.91	
CC5A/CD5AC	048	1.00	0.94	048		1.00	0.91		
CC5A/CD5AW	036	0.97	0.91	CK5A/CK5BT	042	0.99	0.91		
	042	0.99	0.93		048	1.00	0.91		
	048	1.00	0.92		CK5A/CK5BW	036	0.97	0.90	
CD5AA	048	1.00	0.93	048		1.00	0.91		
	048	1.00	0.93	CK5PA		042	0.99	0.91	
CE3AA	036	0.97	0.92		048	1.00	0.91		
	042	0.99	0.92		CK5PT	042	0.99	0.91	
CK3BA	036	0.97	0.91	048		1.00	0.91		
	042	0.99	0.92	CK5PW		036	0.97	0.90	
	048	1.00	0.92		048	1.00	0.91		
CK5A/CK5BA	036	0.97	0.91	COILS + 58CV(A,X)155-22 VARIABLE SPEED FURNACE					
	042	0.99	0.92	CC5A/CD5AA	042	0.99	0.90		
	048	1.00	0.92	CC5A/CD5AC	048	1.00	0.92		
CK5A/CK5BE	042	0.99	0.91	CC5A/CD5AW	036	0.97	0.89		
CK5A/CK5BT	036	0.97	0.91		042	0.99	0.91		
	042	0.99	0.92		048	1.00	0.90		
CK5A/CK5BW	036	0.97	0.90	CD5AA	048	1.00	0.91		
	CK5PA	036	0.97		0.91	CE3AA	036	0.97	0.91
		042	0.99		0.92		042	0.99	0.90
048	1.00	0.92	048	1.00	0.90				
CK5PE	042	0.99	0.91	CK3BA	042	0.99	0.77		
CK5PT	036	0.97	0.91		CK5A/CK5BA	048	1.00	0.90	
	042	0.99	0.92			042	0.99	0.90	
048	1.00	0.92	048	1.00	0.90				

See notes on pg. 38.

Detailed cooling capacities* continued

EVAP AIR		CONDENSER ENTERING AIR TEMPERATURES °F																	
		75			85			95			105			115			125		
CFM	EWB	Capacity MBtu/h†		Total Sys kW**	Capacity MBtu/h†		Total Sys kW**	Capacity MBtu/h†		Total Sys kW**	Capacity MBtu/h†		Total Sys kW**	Capacity MBtu/h†		Total Sys kW**	Capacity MBtu/h†		Total Sys kW**
		Total	Sens‡		Total	Sens‡		Total	Sens‡		Total	Sens‡		Total	Sens‡		Total	Sens‡	
38TSA036-33 Outdoor Section With CK5PA048 Indoor Section continued																			
1050	72	43.0	21.2	2.37	40.7	20.3	2.64	38.0	19.4	2.93	35.2	18.4	3.24	32.5	17.4	3.59	29.5	16.4	3.96
	67	39.5	26.9	2.37	37.6	26.1	2.64	35.6	25.3	2.93	33.4	24.4	3.26	31.0	23.4	3.60	28.3	22.4	3.97
	63††	36.9	26.2	2.37	35.1	25.4	2.64	33.2	24.6	2.93	31.2	23.7	3.25	28.9	22.7	3.59	26.4	21.6	3.96
	62	36.5	32.6	2.37	34.7	31.7	2.64	32.9	30.9	2.93	30.9	29.9	3.25	28.9	28.8	3.59	26.7	26.7	3.96
	57	35.4	35.4	2.37	33.9	33.9	2.64	32.4	32.4	2.93	30.8	30.8	3.25	28.9	28.9	3.59	26.8	26.8	3.96
1200	72	43.6	22.1	2.42	41.1	21.2	2.69	38.4	20.2	2.98	35.4	19.2	3.29	32.7	18.2	3.64	30.1	17.3	4.02
	67	40.1	28.5	2.42	38.1	27.7	2.69	36.0	26.8	2.99	33.7	25.9	3.31	31.2	25.0	3.65	28.4	23.9	4.02
	63††	37.5	27.7	2.42	35.6	26.9	2.69	33.6	26.0	2.98	31.5	25.1	3.30	29.1	24.1	3.65	26.5	23.0	4.01
	62	37.1	34.8	2.42	35.4	33.9	2.69	33.6	33.0	2.98	31.7	31.7	3.30	29.7	29.7	3.65	27.4	27.4	4.02
	57	36.6	36.6	2.42	35.1	35.1	2.69	33.5	33.5	2.99	31.7	31.7	3.31	29.8	29.8	3.65	27.5	27.5	4.02
1350	72	44.0	22.9	2.48	41.4	22.0	2.74	38.6	21.0	3.03	35.6	19.9	3.35	33.2	19.1	3.70	30.5	18.2	4.08
	67	40.5	29.9	2.48	38.5	29.1	2.74	36.3	28.3	3.04	33.9	27.4	3.36	31.4	26.4	3.71	28.5	25.3	4.08
	63††	37.9	29.1	2.48	36.0	28.3	2.74	33.9	27.4	3.04	31.7	26.4	3.36	29.3	25.4	3.70	26.6	24.3	4.06
	62	37.8	36.8	2.48	36.1	35.8	2.74	34.3	34.3	3.04	32.4	32.4	3.36	30.3	30.3	3.70	27.9	27.9	4.07
	57	37.7	37.7	2.48	36.1	36.1	2.74	34.4	34.4	3.04	32.5	32.5	3.36	30.4	30.4	3.71	28.0	28.0	4.08

Multipliers for Determining the Performance With Other Indoor Sections

Indoor Section	Size	Cooling		Indoor Section	Size	Cooling	
		Capacity	Power			Capacity	Power
CK5A/CK5BT	042	0.99	0.90	CK5PA	042	0.99	0.92
	048	1.00	0.90		048	1.00	0.93
CK5A/CK5BW	036	0.97	0.89	CK5PW	036	0.97	0.92
	048	1.00	0.90		COILS + 58MVP080-20 VARIABLE SPEED FURNACE		
CK5PA	042	0.99	0.77	CC5A/CD5AA	042	0.99	0.94
	048	1.00	0.90	CC5A/CD5AC	048	0.99	0.95
CK5PT	042	0.99	0.90	CC5A/CD5AW	036	0.97	0.93
	048	1.00	0.90	CD5AA	048	1.00	0.95
CK5PW	036	0.97	0.89	CK3BA	042	0.99	0.93
	048	1.00	0.90		048	1.00	0.94
COILS + 58MVP040-14 VARIABLE SPEED FURNACE				CK5A/CK5BA	042	0.99	0.93
CC5A/CD5AA	042	0.99	0.93		048	1.00	0.94
CC5A/CD5AW	036	0.97	0.93	CK5A/CK5BW	036	0.97	0.93
	048	1.00	0.95		CK5PA	042	0.99
CK5A/CK5BA	042	0.99	0.93	048		1.00	0.94
CK5A/CK5BW	036	0.97	0.92	CK5PW	036	0.97	0.93
	048	1.00	0.93		COILS + 58MVP100-20 VARIABLE SPEED FURNACE		
CK5PA	042	0.99	0.93	CC5A/CD5AA	042	0.99	0.92
CK5PW	036	0.97	0.92	CC5A/CD5AC	048	0.99	0.93
	048	1.00	0.93	CC5A/CD5AW	036	0.97	0.90
COILS + 58MVP060-14 VARIABLE SPEED FURNACE				CD5AA	048	1.00	0.92
CC5A/CD5AA	036	0.97	0.93	CK3BA	042	0.99	0.91
CK3BA	036	0.97	0.93		048	1.00	0.91
	042	0.99	0.93	CK5A/CK5BA	042	0.99	0.91
CK5A/CK5BA	036	0.97	0.93		048	1.00	0.91
CK5A/CK5BE	042	1.00	0.95	CK5A/CK5BW	036	0.97	0.90
CK5PA	036	0.97	0.93		CK5PA	042	0.99
	COILS + 58MVP080-14 VARIABLE SPEED FURNACE					048	1.00
CC5A/CD5AA	042	0.99	0.93	CK5PW	036	0.97	0.90
CC5A/CD5AC	048	0.99	0.94		COILS + 58MVP120-20 VARIABLE SPEED FURNACE		
CC5A/CD5AW	036	0.97	0.92	CC5A/CD5AA	042	0.99	0.92
CD5AA	048	1.00	0.93	CC5A/CD5AW	036	0.97	0.91
	CK3BA	042	0.99		0.92	048	1.00
048		1.00	0.93	CK5A/CK5BW	036	0.97	0.90
CK5A/CK5BA	042	0.99	0.92		048	1.00	0.92
	048	1.00	0.93	CK5PW	036	0.97	0.90
CK5A/CK5BW	036	0.97	0.92		048	1.00	0.92

See notes on pg. 38.

Detailed cooling capacities* continued

EVAP AIR		CONDENSER ENTERING AIR TEMPERATURES °F																		
		75			85			95			105			115			125			
CFM	EWB	Capacity MBtu/h†		Total Sys kW**	Capacity MBtu/h†		Total Sys kW**	Capacity MBtu/h†		Total Sys kW**	Capacity MBtu/h†		Total Sys kW**	Capacity MBtu/h†		Total Sys kW**	Capacity MBtu/h†		Total Sys kW**	
		Total	Sens‡		Total	Sens‡		Total	Sens‡		Total	Sens‡		Total	Sens‡		Total	Sens‡		Total
38TSA042-33 Outdoor Section With CK5PA060 Indoor Section																				
1225	72	50.0	24.9	2.81	47.4	23.9	3.12	44.7	23.0	3.45	41.8	21.9	3.82	38.6	20.8	4.22	35.5	19.7	4.67	
	67	46.6	32.0	2.79	44.3	31.0	3.09	41.9	30.1	3.43	39.3	29.0	3.80	36.6	28.0	4.21	33.5	26.7	4.66	
	63††	43.5	31.2	2.76	41.3	30.2	3.07	39.1	29.2	3.40	36.8	28.2	3.78	34.2	27.1	4.19	31.8	26.1	4.65	
	62	42.9	38.8	2.76	40.9	37.8	3.06	38.7	36.8	3.40	36.5	35.7	3.78	34.2	34.2	4.19	32.2	32.2	4.65	
	57	41.8	41.8	2.75	40.1	40.1	3.06	38.3	38.3	3.40	36.4	36.4	3.78	34.3	34.3	4.19	32.3	32.3	4.66	
1400	72	50.6	26.0	2.89	47.9	25.0	3.19	44.7	23.9	3.52	41.5	22.8	3.88	38.1	21.6	4.28	35.5	20.7	4.74	
	67	47.3	33.9	2.86	44.9	32.9	3.16	42.0	31.8	3.49	39.3	30.8	3.86	36.3	29.6	4.27	33.6	28.6	4.72	
	63††	44.2	33.0	2.83	41.9	32.0	3.14	39.6	31.0	3.47	37.1	30.0	3.85	34.5	28.8	4.25	32.0	27.8	4.71	
	62	43.8	41.5	2.83	41.7	40.5	3.13	39.5	39.3	3.47	37.4	37.4	3.85	35.2	35.2	4.26	33.0	33.0	4.72	
	57	43.3	43.3	2.82	41.5	41.5	3.13	39.5	39.5	3.47	37.5	37.5	3.85	35.2	35.2	4.27	33.1	33.1	4.73	
1575	72	51.1	27.0	2.95	48.3	26.0	3.26	44.5	24.7	3.58	41.8	23.8	3.95	38.5	22.7	4.35	35.5	21.7	4.80	
	67	47.8	35.8	2.93	45.3	34.8	3.23	42.0	33.5	3.56	39.2	32.4	3.93	36.6	31.5	4.34	33.7	30.3	4.79	
	63††	44.7	34.7	2.90	42.4	33.7	3.20	39.9	32.7	3.54	37.4	31.6	3.91	34.6	30.5	4.32	32.1	29.4	4.78	
	62	44.6	44.0	2.90	42.5	42.5	3.21	40.5	40.5	3.55	38.3	38.3	3.92	35.9	35.9	4.34	33.6	33.6	4.80	
	57	44.6	44.6	2.90	42.6	42.6	3.21	40.6	40.6	3.55	38.4	38.4	3.93	36.0	36.0	4.34	33.7	33.7	4.80	

Multipliers for Determining the Performance With Other Indoor Sections

Indoor Section	Size	Cooling		Indoor Section	Size	Cooling	
		Capacity	Power			Capacity	Power
CC5A/CD5AA	042	0.95	0.98	FE4ANF	003	0.95	0.90
	060	0.99	1.01		005	0.99	0.90
CC5A/CD5AC	048	0.96	1.00	FG3AAA	048	0.98	1.00
CC5A/CD5AW	042	0.95	0.99		060	0.98	0.99
	048	0.98	1.00	FK4(C,D)NB	006	1.00	0.88
CD5AA	060	1.00	1.00		FK4(C,D)NF	003	0.95
	048	0.98	1.00	005	0.99	0.90	
CE3AA	042	0.95	0.97	FV4(A,B)NB	006	1.00	0.88
	048	0.98	0.99		FV4(A,B)NF	003	0.95
CF5AA	060	0.98	0.98	005	0.99	0.90	
	048	0.98	1.00	FX4(A,B)NB	060	1.00	1.00
CK3BA	042	0.95	0.98		FX4(A,B)NF	042	0.95
	048	0.98	1.00	048	0.98	0.98	
CK5A/CK5BA	060	0.99	0.99	COILS + 58CV(A,X)090-16 VARIABLE SPEED FURNACE			
	042	0.95	0.98	CC5A/CD5AA	042	0.95	0.91
	048	0.98	1.00	CC5A/CD5AC	048	0.95	0.91
CK5A/CK5BE	060	1.00	1.00	CD5AA	048	0.98	0.92
	042	0.96	0.98	CE3AA	042	0.95	0.91
CK5A/CK5BT	042	0.95	0.98		048	0.98	0.93
	048	0.98	1.00	CK3BA	042	0.95	0.91
CK5A/CK5BW	060	1.00	1.00		048	0.98	0.93
	048	0.98	1.00	CK5A/CK5BA	042	0.95	0.91
CK5A/CK5BX	060	1.00	0.99		048	0.98	0.93
	CK5PA	042	0.95	0.98	CK5A/CK5BE	042	0.96
048		0.98	1.00	CK5A/CK5BT	042	0.95	0.91
060		1.00	1.00		048	0.98	0.93
CK5PE	042	0.96	0.98	CK5PA	042	0.95	0.91
	048	0.98	1.00		048	0.98	0.93
CK5PT	060	1.00	1.00	CK5PE	042	0.96	0.92
	048	0.98	1.00		042	0.95	0.91
CK5PW	048	0.98	1.00	CK5PT	042	0.95	0.91
	060	1.00	0.99		048	0.98	0.93
CK5PX	042	0.95	0.99	COILS + 58CV(A,X)110-20 VARIABLE SPEED FURNACE			
	048	0.98	1.00	CC5A/CD5AA	042	0.95	0.95
	060	1.00	1.03	060	0.96	0.95	
F(A,B)4(A,B)N(F,B,C)	070	1.01	1.02	CC5A/CD5AC	048	0.95	0.95
	042	0.95	0.99	CC5A/CD5AW	042	0.95	0.96
FB4(A,B)NB	048	0.98	1.00	CD5AA	048	0.96	0.95
	060	1.00	1.03		060	0.99	0.94
FC4(B,C)N(F,B)	054	0.99	0.95	CE3AA	042	0.95	0.94
	070	1.01	1.02		048	0.98	0.96
FC4(B,C)NB	006	1.00	0.88	060	0.99	0.95	

See notes on pg. 38.

Detailed cooling capacities* continued

EVAP AIR		CONDENSER ENTERING AIR TEMPERATURES °F																	
		75			85			95			105			115			125		
CFM	EWB	Capacity MBtu/h†		Total Sys kW**	Capacity MBtu/h†		Total Sys kW**	Capacity MBtu/h†		Total Sys kW**	Capacity MBtu/h†		Total Sys kW**	Capacity MBtu/h†		Total Sys kW**	Capacity MBtu/h†		Total Sys kW**
		Total	Sens‡		Total	Sens‡		Total	Sens‡		Total	Sens‡		Total	Sens‡		Total	Sens‡	
38TSA042-33 Outdoor Section With CK5PA060 Indoor Section Continued																			
1225	72	50.0	24.9	2.81	47.4	23.9	3.12	44.7	23.0	3.45	41.8	21.9	3.82	38.6	20.8	4.22	35.5	19.7	4.67
	67	46.6	32.0	2.79	44.3	31.0	3.09	41.9	30.1	3.43	39.3	29.0	3.80	36.6	28.0	4.21	33.5	26.7	4.66
	63††	43.5	31.2	2.76	41.3	30.2	3.07	39.1	29.2	3.40	36.8	28.2	3.78	34.2	27.1	4.19	31.8	26.1	4.65
	62	42.9	38.8	2.76	40.9	37.8	3.06	38.7	36.8	3.40	36.5	35.7	3.78	34.2	34.2	4.19	32.2	32.2	4.65
	57	41.8	41.8	2.75	40.1	40.1	3.06	38.3	38.3	3.40	36.4	36.4	3.78	34.3	34.3	4.19	32.3	32.3	4.66
1400	72	50.6	26.0	2.89	47.9	25.0	3.19	44.7	23.9	3.52	41.5	22.8	3.88	38.1	21.6	4.28	35.5	20.7	4.74
	67	47.3	33.9	2.86	44.9	32.9	3.16	42.0	31.8	3.49	39.3	30.8	3.86	36.3	29.6	4.27	33.6	28.6	4.72
	63††	44.2	33.0	2.83	41.9	32.0	3.14	39.6	31.0	3.47	37.1	30.0	3.85	34.5	28.8	4.25	32.0	27.8	4.71
	62	43.8	41.5	2.83	41.7	40.5	3.13	39.5	39.3	3.47	37.4	37.4	3.85	35.2	35.2	4.26	33.0	33.0	4.72
	57	43.3	43.3	2.82	41.5	41.5	3.13	39.5	39.5	3.47	37.5	37.5	3.85	35.2	35.2	4.27	33.1	33.1	4.73
1575	72	51.1	27.0	2.95	48.3	26.0	3.26	44.5	24.7	3.58	41.8	23.8	3.95	38.5	22.7	4.35	35.5	21.7	4.80
	67	47.8	35.8	2.93	45.3	34.8	3.23	42.0	33.5	3.56	39.2	32.4	3.93	36.6	31.5	4.34	33.7	30.3	4.79
	63††	44.7	34.7	2.90	42.4	33.7	3.20	39.9	32.7	3.54	37.4	31.6	3.91	34.6	30.5	4.32	32.1	29.4	4.78
	62	44.6	44.0	2.90	42.5	42.5	3.21	40.5	40.5	3.55	38.3	38.3	3.92	35.9	35.9	4.34	33.6	33.6	4.80
	57	44.6	44.6	2.90	42.6	42.6	3.21	40.6	40.6	3.55	38.4	38.4	3.93	36.0	36.0	4.34	33.7	33.7	4.80

Multipliers for Determining the Performance With Other Indoor Sections

Indoor Section	Size	Cooling		Indoor Section	Size	Cooling		
		Capacity	Power			Capacity	Power	
CK3BA	042	0.95	0.95	CK5A/CK5BW	048	0.98	0.91	
	048	0.98	0.96		CK5A/CK5BX	060	1.00	0.90
	060	0.99	0.94			CK5PA	042	0.95
CK5A/CK5BA	042	0.95	0.95	048	0.98		0.91	
	048	0.98	0.96	060	0.99		0.90	
	060	0.99	0.94	CK5PT	042		0.95	0.90
CK5A/CK5BE	042	0.95	0.95		048		0.98	0.91
	CK5A/CK5BT	042	0.95		0.95		060	0.99
048		0.98	0.96	CK5PW	048		0.98	0.91
060		0.99	0.94		060		1.00	0.90
CK5A/CK5BW	048	0.98	0.95		COILS + 58CV(A,X)155-22 VARIABLE SPEED FURNACE			
	CK5A/CK5BX	060	0.99	0.94	CC5A/CD5AA	042	0.95	0.90
		CK5PA	042	0.95		0.95	060	0.99
048			0.98	0.96	CC5A/CD5AC	048	0.95	0.90
060	0.99		0.96	CC5A/CD5AW		042	0.95	0.91
CK5PE	042	0.95	0.95			048	0.98	0.91
	CK5PT	042	0.95		0.95	060	1.00	0.91
		048	0.98	0.96	CD5AA	048	0.98	0.91
060		0.99	0.94	CE3AA		042	0.95	0.90
CK5PW	048	0.98	0.95		048	0.98	0.92	
	CK5PX	060	0.99	0.94	060	0.99	0.90	
COILS + 58CV(A,X)135-22 VARIABLE SPEED FURNACE				CK3BA	042	0.95	0.90	
CC5A/CD5AA		042	0.95		0.90	048	0.98	0.91
	060	0.99	0.92		060	0.99	0.90	
CC5A/CD5AC	048	0.95	0.90	CK5A/CK5BA	042	0.95	0.90	
	CC5A/CD5AW	042	0.95		0.91	048	0.98	0.91
		048	0.98		0.91	060	0.99	0.90
060		1.00	0.91	CK5A/CK5BT	042	0.95	0.90	
CD5AA	048	0.98	0.91		048	0.98	0.91	
	CE3AA	042	0.95		0.90	060	0.99	0.90
		048	0.98	0.92	CK5A/CK5BW	048	0.98	0.91
060		0.99	0.90	CK5A/CK5BX		060	1.00	0.90
CK3BA	042	0.95	0.90			CK5PA	042	0.95
	048	0.98	0.91		048		0.98	0.91
	060	0.99	0.90	060	0.99		0.90	
CK5A/CK5BA	042	0.95	0.90	CK5PT	042	0.95	0.90	
	048	0.98	0.91		048	0.98	0.91	
	060	0.99	0.90		060	0.99	0.90	
CK5A/CK5BT	042	0.95	0.90	CK5PW	048	0.98	0.91	
	048	0.98	0.91		—	—	—	
	060	0.99	0.90		—	—	—	

See notes on pg. 38.

Detailed cooling capacities* continued

EVAP AIR		CONDENSER ENTERING AIR TEMPERATURES °F																					
		75				85				95				105				115				125	
CFM	EWB	Capacity MBtu/h†		Total Sys kW**	Capacity MBtu/h†		Total Sys kW**	Capacity MBtu/h†		Total Sys kW**	Capacity MBtu/h†		Total Sys kW**	Capacity MBtu/h†		Total Sys kW**	Capacity MBtu/h†		Total Sys kW**				
		Total	Sens‡		Total	Sens‡		Total	Sens‡		Total	Sens‡		Total	Sens‡		Total	Sens‡					
38TSA042-33 Outdoor Section With CK5PA060 Indoor Section continued																							
1225	72	50.0	24.9	2.81	47.4	23.9	3.12	44.7	23.0	3.45	41.8	21.9	3.82	38.6	20.8	4.22	35.5	19.7	4.67				
	67	46.6	32.0	2.79	44.3	31.0	3.09	41.9	30.1	3.43	39.3	29.0	3.80	36.6	28.0	4.21	33.5	26.7	4.66				
	63††	43.5	31.2	2.76	41.3	30.2	3.07	39.1	29.2	3.40	36.8	28.2	3.78	34.2	27.1	4.19	31.8	26.1	4.65				
	62	42.9	38.8	2.76	40.9	37.8	3.06	38.7	36.8	3.40	36.5	35.7	3.78	34.2	34.2	4.19	32.2	32.2	4.65				
	57	41.8	41.8	2.75	40.1	40.1	3.06	38.3	38.3	3.40	36.4	36.4	3.78	34.3	34.3	4.19	32.3	32.3	4.66				
1400	72	50.6	26.0	2.89	47.9	25.0	3.19	44.7	23.9	3.52	41.5	22.8	3.88	38.1	21.6	4.28	35.5	20.7	4.74				
	67	47.3	33.9	2.86	44.9	32.9	3.16	42.0	31.8	3.49	39.3	30.8	3.86	36.3	29.6	4.27	33.6	28.6	4.72				
	63††	44.2	33.0	2.83	41.9	32.0	3.14	39.6	31.0	3.47	37.1	30.0	3.85	34.5	28.8	4.25	32.0	27.8	4.71				
	62	43.8	41.5	2.83	41.7	40.5	3.13	39.5	39.3	3.47	37.4	37.4	3.85	35.2	35.2	4.26	33.0	33.0	4.72				
	57	43.3	43.3	2.82	41.5	41.5	3.13	39.5	39.5	3.47	37.5	37.5	3.85	35.2	35.2	4.27	33.1	33.1	4.73				
1575	72	51.1	27.0	2.95	48.3	26.0	3.26	44.5	24.7	3.58	41.8	23.8	3.95	38.5	22.7	4.35	35.5	21.7	4.80				
	67	47.8	35.8	2.93	45.3	34.8	3.23	42.0	33.5	3.56	39.2	32.4	3.93	36.6	31.5	4.34	33.7	30.3	4.79				
	63††	44.7	34.7	2.90	42.4	33.7	3.20	39.9	32.7	3.54	37.4	31.6	3.91	34.6	30.5	4.32	32.1	29.4	4.78				
	62	44.6	44.0	2.90	42.5	42.5	3.21	40.5	40.5	3.55	38.3	38.3	3.92	35.9	35.9	4.34	33.6	33.6	4.80				
	57	44.6	44.6	2.90	42.6	42.6	3.21	40.6	40.6	3.55	38.4	38.4	3.93	36.0	36.0	4.34	33.7	33.7	4.80				

Multipliers for Determining the Performance With Other Indoor Sections

Indoor Section	Size	Cooling		Indoor Section	Size	Cooling		
		Capacity	Power			Capacity	Power	
CK5PX	060	1.00	0.89	CK5PA	042	0.95	0.94	
COILS + 58MVP040-14 VARIABLE SPEED FURNACE					048	0.98	0.95	
CC5A/CD5AA	042	0.95	0.94		060	0.99	0.94	
CC5A/CD5AW	048	0.98	0.95	CK5PX	060	1.00	0.94	
CK5A/CK5BA	042	0.95	0.94	COILS + 58MVP100-20 VARIABLE SPEED FURNACE				
CK5A/CK5BW	048	0.98	0.95	CC5A/CD5AA	042	0.95	0.91	
CK5PA	042	0.95	0.94		060	0.98	0.93	
CK5PW	048	0.98	0.95	CC5A/CD5AC	048	0.96	0.93	
COILS + 58MVP060-14 VARIABLE SPEED FURNACE				CC5A/CD5AW	060	1.00	0.93	
CK3BA	042	0.95	0.94	CD5AA	048	0.98	0.93	
CK5A/CK5BE	042	0.95	0.94	CK3BA	042	0.95	0.91	
CK5PE	042	0.95	0.94		048	0.98	0.92	
COILS + 58MVP080-14 VARIABLE SPEED FURNACE					060	0.99	0.92	
CC5A/CD5AA	042	0.95	0.93	CK5A/CK5BA	042	0.95	0.91	
CC5A/CD5AC	048	0.96	0.94		048	0.98	0.92	
CD5AA	048	0.98	0.94		060	0.99	0.92	
CK3BA	042	0.95	0.93	CK5A/CK5BX	060	1.00	0.91	
	048	0.98	0.94		CK5PA	042	0.95	0.91
CK5A/CK5BA	042	0.95	0.93			048	0.98	0.92
	048	0.98	1.01	060		0.99	0.92	
CK5PA	042	0.95	0.93	CK5PX	060	1.00	0.91	
	048	0.98	1.01	COILS + 58MVP120-20 VARIABLE SPEED FURNACE				
COILS + 58MVP080-20 VARIABLE SPEED FURNACE				CC5A/CD5AA	042	0.95	0.91	
CC5A/CD5AA	042	0.95	0.94		060	0.98	0.93	
	060	0.98	0.96	CC5A/CD5AW	048	0.98	0.93	
CC5A/CD5AC	048	0.96	0.96		060	1.00	0.93	
CC5A/CD5AW	060	1.00	0.95	CK3BA	060	0.99	0.92	
CD5AA	048	0.98	0.96	CK5A/CK5BA	042	0.95	0.91	
CK3BA	042	0.95	0.94			060	0.99	0.92
	048	0.98	0.95		CK5A/CK5BW	048	0.98	0.92
	060	0.99	0.94	CK5A/CK5BX	060	1.00	0.91	
CK5A/CK5BA	042	0.95	0.94	CK5PA	042	0.95	0.91	
	048	0.98	0.95			060	0.99	0.92
	060	0.99	0.94		CK5PW	048	0.98	0.92
CK5A/CK5BX	060	1.00	0.94	CK5PX	060	1.00	0.91	

See notes on pg. 38.

Detailed cooling capacities* continued

EVAP AIR		CONDENSER ENTERING AIR TEMPERATURES °F																	
		75			85			95			105			115			125		
CFM	EWB	Capacity MBtu/h†		Total Sys kW**	Capacity MBtu/h†		Total Sys kW**	Capacity MBtu/h†		Total Sys kW**	Capacity MBtu/h†		Total Sys kW**	Capacity MBtu/h†		Total Sys kW**	Capacity MBtu/h†		Total Sys kW**
		Total	Sens‡		Total	Sens‡		Total	Sens‡		Total	Sens‡		Total	Sens‡		Total	Sens‡	
38TSA048-31 Outdoor Section With CD5PX060 Indoor Section																			
1400	57	46.69	46.69	3.23	44.92	44.92	3.59	43.01	43.01	3.97	40.88	40.88	4.40	38.56	38.56	4.87	35.87	35.87	5.38
	62	48.20	43.90	3.24	45.93	42.83	3.60	43.52	41.68	3.98	41.00	40.45	4.41	38.56	38.56	4.88	35.88	35.88	5.38
	67	52.75	37.13	3.28	50.23	36.03	3.64	47.50	34.89	4.03	44.58	33.69	4.45	41.41	32.41	4.91	37.89	31.01	5.40
	72	57.78	30.29	3.33	54.97	29.21	3.69	51.95	28.07	4.08	48.72	26.87	4.49	45.21	25.59	4.95	41.27	24.16	5.44
1600	57	48.69	48.69	3.32	46.70	46.70	3.68	44.60	44.60	4.07	42.37	42.37	4.50	39.83	39.83	4.97	36.92	36.92	5.47
	62	49.27	47.13	3.33	46.91	45.96	3.68	44.58	44.58	4.07	42.36	42.36	4.50	39.82	39.82	4.97	36.91	36.91	5.47
	67	53.77	39.46	3.37	51.05	38.34	3.73	48.21	37.19	4.11	45.18	35.96	4.53	41.91	34.66	4.99	38.26	33.24	5.49
	72	58.85	31.78	3.42	55.84	30.66	3.78	52.71	29.47	4.16	49.36	28.25	4.58	45.73	26.94	5.04	41.65	25.50	5.52
1800	57	50.25	50.25	3.41	48.17	48.17	3.77	45.99	45.99	4.17	43.52	43.52	4.59	40.83	40.83	5.06	37.79	37.79	5.56
	62	50.19	50.19	3.41	48.17	48.17	3.77	45.99	45.99	4.17	43.52	43.52	4.59	40.82	40.82	5.06	37.79	37.79	5.56
	67	54.47	41.68	3.46	51.66	40.55	3.81	48.74	39.38	4.19	45.63	38.15	4.62	42.28	36.85	5.08	38.48	35.35	5.56
	72	59.60	33.12	3.51	56.50	31.99	3.86	53.26	30.81	4.25	49.82	29.58	4.66	46.09	28.26	5.12	41.83	26.78	5.60

Multipliers for Determining the Performance With Other Indoor Sections

Indoor Section	Size	Cooling		Indoor Section	Size	Cooling	
		Capacity	Power			Capacity	Power
CC5A/CD5AA	060	0.97	1.00	CD5AA	048	0.97	0.97
CC5A/CD5AC	048	0.95	0.99	CE3AA	048	0.98	0.97
CC5A/CD5AW	048	0.96	0.99		060	0.99	0.96
	060	0.99	1.00	CK3BA	048	0.98	0.97
CD5AA	048	0.96	0.99	CK5A/CK5BA	048	0.98	0.97
CD5PX	060	1.00	1.00	CK5A/CK5BT	048	0.98	0.97
CE3AA	048	0.98	1.00	CK5PA	048	0.98	0.97
	060	1.00	1.00		CK5PT	048	0.98
CF5AA	048	0.97	1.00	COILS + 58CV(A,X)110-20 VARIABLE SPEED FURNACE			
CK3BA	048	0.97	1.00	CC5A/CD5AA	060	0.97	0.97
	060	0.99	1.00	CC5A/CD5AC	048	0.96	0.98
CK5A/CK5BA	048	0.97	1.00	CC5A/CD5AW	048	0.97	0.97
	060	0.99	1.00	CD5AA	048	0.97	0.97
CK5A/CK5BT	048	0.97	1.00	CD5PX	060	1.00	0.96
	060	0.99	1.00	CE3AA	048	0.98	0.98
CK5A/CK5BW	048	0.97	1.00		060	0.99	0.96
	CK5A/CK5BX	060	1.00	1.00	CK3BA	048	0.98
CK5PA	048	0.97	1.00	060		0.99	0.96
	060	0.99	1.00	CK5A/CK5BA	048	0.98	0.98
CK5PT	048	0.97	1.00		060	0.99	0.96
	060	0.99	1.00	CK5A/CK5BT	048	0.98	0.98
CK5PW	048	0.97	1.00		060	0.99	0.96
	CK5PX	060	1.00	1.00	CK5A/CK5BW	048	0.98
F(A,B)4BN(F,B,C)	048	0.99	1.02	CK5A/CK5BX	060	1.00	0.96
	060	1.00	1.03	CK5PA	048	0.98	0.98
FB4BNB	070	1.01	1.02		060	0.99	0.96
	FC4CN(F,B)	048	0.99	1.02	CK5PT	048	0.98
060		1.00	1.03	060		0.99	0.96
FC4CNB	054	1.01	0.99	CK5PW	048	0.98	0.97
	070	1.01	1.02	CK5PX	060	1.00	0.96
FE4ANB	006	1.02	0.93	COILS + 58CV(A,X)135-22 VARIABLE SPEED FURNACE			
FE4ANF	005	1.01	0.94	CC5A/CD5AA	060	0.98	0.96
FG3AAA	048	0.95	0.98	CC5A/CD5AC	048	0.96	0.95
FK4DNB	006	1.02	0.93	CC5A/CD5AW	048	0.98	0.96
FK4DNF	005	1.01	0.94	CD5AA	048	0.98	0.96
FV4BNB	006	1.02	0.93	CD5PX	060	1.02	0.96
FV4BNF	005	1.01	0.94	CE3AA	048	0.98	0.96
FX4BNB	060	1.00	1.01		060	0.99	0.94
	048	0.99	1.00	CK3BA	048	0.98	0.96
COILS + 58CV(A,X)090-16 VARIABLE SPEED FURNACE					060	0.99	0.94
CC5A/CD5AC	048	0.96	0.97	—	—	—	

See notes on pg. 38.

Detailed cooling capacities* continued

EVAP AIR		CONDENSER ENTERING AIR TEMPERATURES °F																	
		75			85			95			105			115			125		
CFM	EWB	Capacity MBtu/h†		Total Sys kW**	Capacity MBtu/h†		Total Sys kW**	Capacity MBtu/h†		Total Sys kW**	Capacity MBtu/h†		Total Sys kW**	Capacity MBtu/h†		Total Sys kW**	Capacity MBtu/h†		Total Sys kW**
		Total	Sens‡		Total	Sens‡		Total	Sens‡		Total	Sens‡		Total	Sens‡		Total	Sens‡	
38TSA048-31 Outdoor Section With CD5PX060 Indoor Section continued																			
1400	57	46.69	46.69	3.23	44.92	44.92	3.59	43.01	43.01	3.97	40.88	40.88	4.40	38.56	38.56	4.87	35.87	35.87	5.38
	62	48.20	43.90	3.24	45.93	42.83	3.60	43.52	41.68	3.98	41.00	40.45	4.41	38.56	38.56	4.88	35.88	35.88	5.38
	67	52.75	37.13	3.28	50.23	36.03	3.64	47.50	34.89	4.03	44.58	33.69	4.45	41.41	32.41	4.91	37.89	31.01	5.40
	72	57.78	30.29	3.33	54.97	29.21	3.69	51.95	28.07	4.08	48.72	26.87	4.49	45.21	25.59	4.95	41.27	24.16	5.44
1600	57	48.69	48.69	3.32	46.70	46.70	3.68	44.60	44.60	4.07	42.37	42.37	4.50	39.83	39.83	4.97	36.92	36.92	5.47
	62	49.27	47.13	3.33	46.91	45.96	3.68	44.58	44.58	4.07	42.36	42.36	4.50	39.82	39.82	4.97	36.91	36.91	5.47
	67	53.77	39.46	3.37	51.05	38.34	3.73	48.21	37.19	4.11	45.18	35.96	4.53	41.91	34.66	4.99	38.26	33.24	5.49
	72	58.85	31.78	3.42	55.84	30.66	3.78	52.71	29.47	4.16	49.36	28.25	4.58	45.73	26.94	5.04	41.65	25.50	5.52
1800	57	50.25	50.25	3.41	48.17	48.17	3.77	45.99	45.99	4.17	43.52	43.52	4.59	40.83	40.83	5.06	37.79	37.79	5.56
	62	50.19	50.19	3.41	48.17	48.17	3.77	45.99	45.99	4.17	43.52	43.52	4.59	40.82	40.82	5.06	37.79	37.79	5.56
	67	54.47	41.68	3.46	51.66	40.55	3.81	48.74	39.38	4.19	45.63	38.15	4.62	42.28	36.85	5.08	38.48	35.35	5.56
	72	59.60	33.12	3.51	56.50	31.99	3.86	53.26	30.81	4.25	49.82	29.58	4.66	46.09	28.26	5.12	41.83	26.78	5.60

Multipliers for Determining the Performance With Other Indoor Sections

Indoor Section	Size	Cooling		Indoor Section	Size	Cooling	
		Capacity	Power			Capacity	Power
CK5A/CK5BA	048	0.98	0.96	CD5PX	060	1.00	0.97
	060	0.99	0.93		CE3AA	048	0.98
CK5A/CK5BT	048	0.99	0.97	CK3BA		060	0.99
	060	0.99	0.93		048	0.98	0.97
CK5A/CK5BW	048	0.98	0.95	060	0.99	0.96	
CK5A/CK5BX	060	1.00	0.94	CK5A/CK5BA	048	0.98	0.98
	CK5PA	048	0.98		0.96	060	0.99
060		0.99	0.93	CK5A/CK5BT	048	0.98	0.98
CK5PT	048	0.98	0.96		060	0.99	0.96
	060	0.99	0.93	CK5A/CK5BW	048	0.98	0.97
CK5PW	048	0.98	0.95		CK5A/CK5BX	060	1.00
	060	0.99	0.94	CK5PA		048	0.98
CK5PX	060	1.00	0.94		060	0.99	0.96
	COILS + 58CV(A,X)155-22 VARIABLE SPEED FURNACE						
CC5A/CD5AA	060	0.98	0.95	CK5PT	048	0.98	0.98
CC5A/CD5AC	048	0.96	0.95		060	0.99	0.96
CC5A/CD5AW	048	0.98	0.95	CK5PW	048	0.98	0.97
CD5AA	048	0.98	0.95	CK5PX	060	1.00	0.96
CD5PX	060	1.00	0.94	COILS + 58MVP120-20 VARIABLE SPEED FURNACE			
CE3AA	048	0.98	0.95	CC5A/CD5AA	060	0.97	0.96
	060	0.99	0.93	CC5A/CD5AC	048	0.96	0.97
CK3BA	048	0.98	0.95	CC5A/CD5AW	048	0.97	0.97
	060	0.99	0.93	CD5AA	048	0.97	0.97
CK5A/CK5BA	048	0.98	0.95	CD5PX	060	1.00	0.96
	060	0.99	0.93	CE3AA	048	0.98	0.97
CK5A/CK5BT	048	0.98	0.95		060	0.99	0.96
	060	0.99	0.93	CK3BA	048	0.98	0.97
CK5A/CK5BW	048	0.98	0.94		060	0.99	0.96
	CK5A/CK5BX	060	1.00	0.93	CK5A/CK5BA	048	0.98
CK5PA		048	0.98	0.95		060	0.99
	060	0.99	0.93	CK5A/CK5BT	048	0.98	0.97
CK5PT	048	0.98	0.95		060	0.99	0.96
	060	0.99	0.93	CK5A/CK5BW	048	0.98	0.97
CK5PW	048	0.98	0.94		CK5A/CK5BX	060	1.00
	060	0.99	0.94	CK5PA		048	0.98
CK5PX	060	1.00	0.93		060	0.99	0.96
	COILS + 58MVP100-20 VARIABLE SPEED FURNACE						
CC5A/CD5AA	060	0.97	0.97	CK5PT	048	0.98	0.97
CC5A/CD5AC	048	0.96	0.98		060	0.99	0.96
CC5A/CD5AW	048	0.97	0.97	CK5PW	048	0.98	0.97
CD5AA	048	0.97	0.97	CK5PX	060	1.00	0.96

See notes on pg. 38.

Detailed cooling capacities* continued

EVAP AIR		CONDENSER ENTERING AIR TEMPERATURES °F																	
		75			85			95			105			115			125		
CFM	EWB	Capacity MBtu/h†		Total Sys kW**	Capacity MBtu/h†		Total Sys kW**	Capacity MBtu/h†		Total Sys kW**	Capacity MBtu/h†		Total Sys kW**	Capacity MBtu/h†		Total Sys kW**	Capacity MBtu/h†		Total Sys kW**
		Total	Sens‡		Total	Sens‡		Total	Sens‡		Total	Sens‡		Total	Sens‡		Total	Sens‡	
38TSA060-30 Outdoor Section With CD5PX060 Indoor Section																			
1750	57	57.47	57.47	3.94	55.24	55.24	4.40	52.80	52.80	4.90	49.98	49.98	5.45	46.82	46.82	6.01	43.02	43.02	6.59
	62	58.99	54.27	3.94	56.24	52.95	4.40	53.21	51.50	4.90	49.92	49.92	5.45	46.81	46.81	6.01	43.02	43.02	6.59
	67	64.55	45.77	3.95	61.42	44.45	4.41	58.00	43.04	4.91	54.17	41.47	5.46	49.88	39.74	6.04	44.98	37.81	6.61
	72	70.69	37.28	3.96	67.25	35.93	4.43	63.46	34.51	4.93	59.19	32.92	5.48	54.41	31.18	6.08	48.92	29.21	6.65
2000	57	59.83	59.83	4.03	57.36	57.36	4.49	54.66	54.66	4.99	51.70	51.70	5.55	48.26	48.26	6.12	44.18	44.18	6.70
	72	60.35	58.18	4.03	57.46	56.71	4.49	54.65	54.65	4.99	51.70	51.70	5.55	48.25	48.25	6.12	44.17	44.17	6.70
	67	65.75	48.63	4.04	62.42	47.26	4.51	58.78	45.79	5.01	54.81	44.20	5.56	50.40	42.45	6.14	45.36	40.50	6.71
	72	71.99	39.04	4.06	68.32	37.68	4.52	64.29	36.20	5.03	59.87	34.59	5.58	54.92	32.82	6.17	49.26	30.83	6.75
2250	62	61.66	61.66	4.13	59.08	59.08	4.59	56.26	56.26	5.09	53.06	53.06	5.64	49.39	49.39	6.23	45.11	45.11	6.80
	57	61.59	61.59	4.13	59.06	59.06	4.59	56.25	56.25	5.09	53.05	53.05	5.64	49.39	49.39	6.23	45.10	45.10	6.80
	72	66.55	51.30	4.13	63.08	49.91	4.60	59.35	48.43	5.10	55.29	46.82	5.65	50.79	45.06	6.24	45.60	43.01	6.81
	72	72.86	40.69	4.15	69.03	39.29	4.62	64.89	37.80	5.12	60.34	36.17	5.67	55.26	34.38	6.26	49.43	32.36	6.84

Multipliers for Determining the Performance With Other Indoor Sections

Indoor Section	Size	Cooling		Indoor Section	Size	Cooling	
		Capacity	Power			Capacity	Power
CC5A/CD5AA	060	0.97	1.00	CD5PX	060	1.00	0.98
CC5A/CD5AW	060	0.98	1.00	CE3AA	060	1.00	0.98
CD5PX	060	1.00	1.00	CK3BA	060	0.99	0.97
CE3AA	060	1.00	1.00	CK5A/CK5BA	060	0.99	0.97
CK3BA	060	0.99	1.00	CK5A/CK5BT	060	0.99	0.97
CK5A/CK5BA	060	0.99	1.00	CK5A/CK5BX	060	1.00	0.97
CK5A/CK5BT	060	0.99	1.00	CK5PA	060	0.99	0.97
CK5A/CK5BX	060	1.00	1.00	CK5PT	060	0.99	0.97
CK5PA	060	0.99	1.00	CK5PX	060	1.00	0.97
CK5PT	060	0.99	1.00	COILS + 58CV(A,X)155-22 VARIABLE SPEED FURNACE			
CK5PX	060	1.00	1.00	CC5A/CD5AA	060	0.97	0.97
F(A,B)4BN(F,B,C)	060	1.00	1.03	CD5PX	060	1.00	0.97
FB4BNB	070	1.02	1.02	CE3AA	060	1.00	0.97
FC4CN(F,B)	060	1.00	1.03	CK3BA	060	0.99	0.96
FC4CNB	070	1.02	1.02	CK5A/CK5BA	060	0.99	0.96
FE4ANB	006	1.02	0.95	CK5A/CK5BT	060	0.99	0.96
FG3AAA	060	0.98	1.01	CK5A/CK5BX	060	1.00	0.96
FK4DNB	006	1.02	0.95	CK5PA	060	0.99	0.96
FV4BNB	006	1.02	0.95	CK5PT	060	0.99	0.96
FX4BNB	060	1.01	1.01	CK5PX	060	1.00	0.96
COILS + 58CV(A,X)110-20 VARIABLE SPEED FURNACE				COILS + 58MVP100-20 VARIABLE SPEED FURNACE			
CC5A/CD5AA	060	0.97	1.01	CK5A/CK5BX	060	1.00	1.01
CD5PX	060	1.00	1.01	CK5PX	060	1.00	1.01
CE3AA	060	1.00	1.01	COILS + 58MVP120-20 VARIABLE SPEED FURNACE			
CK3BA	060	0.99	1.00	CK3BA	060	0.99	1.00
CK5A/CK5BA	060	0.99	1.00	CK5A/CK5BA	060	0.99	1.00
CK5A/CK5BT	060	0.99	1.00	CK5A/CK5BT	060	0.99	1.00
CK5A/CK5BX	060	1.00	0.99	CK5A/CK5BX	060	1.00	1.00
CK5PA	060	0.99	1.00	CK5PA	060	0.99	1.00
CK5PT	060	0.99	1.00	CK5PT	060	0.99	1.00
CK5PX	060	1.00	0.99	CK5PX	060	1.00	1.00
COILS + 58CV(A,X)135-22 VARIABLE SPEED FURNACE				---			
CC5A/CD5AA	060	0.97	0.98	---			

NOTE: If the required data fall between the published data, interpolation may be performed. Extrapolation is not an acceptable practice.

* Detailed cooling capacities are based on indoor and outdoor unit at the same elevation per ARI standard 210/240-94. If additional tubing length and/or indoor unit is located above outdoor unit, a slight variation in capacity may occur.

† Total and sensible capacities are net capacities. Blower motor heat has been subtracted.

‡ Sensible capacities shown are based on 80°F (27°C) entering air at the indoor coil. For sensible capacities at other than 80°F (27°C), deduct 835 Btu/h (245 kW) per 1000 CFM (480 L/S) of indoor coil air for each degree below 80°F (27°C), or add 835 Btu/h (245 kW) per 1000 CFM (480 L/S) of indoor coil air per degree above 80°F (27°C).

When the required data falls between the published data, interpolation may be performed.

** Total system kW is total of indoor and outdoor unit kilowatts.

†† At TVA rating indoor condition (75°F edb/63°F ewb). All other indoor air temperatures are at 80°F edb.

Condenser only ratings*

SST °F		CONDENSER ENTERING AIR TEMPERATURES °F							
		55	65	75	85	95	105	115	125
38TSA024-34									
30	TCG	22.5	21.2	19.8	18.5	17.1	15.7	14.2	12.7
	SDT	67.2	76.7	86.2	95.7	105.2	114.6	123.9	133.3
	KW	0.89	1.05	1.23	1.43	1.65	1.88	2.12	2.38
35	TCG	24.8	23.4	22.0	20.5	19.0	17.5	15.9	14.2
	SDT	68.4	77.8	87.3	96.7	106.1	115.5	124.8	134.0
	KW	0.89	1.05	1.24	1.44	1.66	1.90	2.15	2.41
40	TCG	27.3	25.8	24.3	22.7	21.1	19.4	17.6	15.8
	SDT	69.6	79.0	88.4	97.8	107.1	116.4	125.6	134.8
	KW	0.90	1.06	1.25	1.45	1.67	1.91	2.17	2.44
45	TCG	30.0	28.4	26.7	25.0	23.2	21.4	19.5	17.4
	SDT	70.8	80.2	89.5	98.9	108.1	117.4	126.5	135.6
	KW	0.91	1.07	1.26	1.46	1.69	1.92	2.19	2.46
50	TCG	32.8	31.1	29.2	27.4	25.5	23.5	21.4	19.2
	SDT	72.2	81.4	90.7	100.0	109.2	118.4	127.5	136.5
	KW	0.91	1.08	1.26	1.47	1.70	1.94	2.20	2.48
55	TCG	35.9	33.9	31.9	29.9	27.8	25.7	23.4	20.9
	SDT	73.6	82.8	92.0	101.2	110.4	119.4	128.4	137.3
	KW	0.92	1.09	1.27	1.48	1.71	1.95	2.22	2.50
38TSA030-33									
30	TCG	27.3	25.9	24.4	23.0	21.6	20.1	18.6	17.0
	SDT	67.5	77.2	86.9	96.6	106.0	116.0	126.0	135.0
	KW	1.28	1.44	1.63	1.84	2.08	2.34	2.64	2.96
35	TCG	30.0	28.4	26.9	25.3	23.7	22.1	20.5	18.8
	SDT	68.6	78.3	87.9	97.6	107.0	117.0	127.0	136.0
	KW	1.28	1.45	1.64	1.85	2.09	2.35	2.64	2.96
40	TCG	32.9	31.2	29.5	27.8	26.0	24.3	22.5	20.6
	SDT	69.8	79.4	89.1	98.7	108.0	118.0	127.0	137.0
	KW	1.29	1.46	1.65	1.86	2.09	2.36	2.65	2.97
45	TCG	36.0	34.1	32.2	30.4	28.5	26.6	24.7	22.6
	SDT	71.1	80.7	90.2	99.8	109.0	119.0	128.0	138.0
	KW	1.30	1.47	1.66	1.87	2.10	2.37	2.66	2.98
50	TCG	39.2	37.2	35.2	33.2	31.1	29.1	26.9	24.7
	SDT	72.4	82.0	91.5	101.0	111.0	120.0	129.0	139.0
	KW	1.32	1.48	1.67	1.88	2.12	2.38	2.67	2.99
55	TCG	42.7	40.5	38.3	36.1	33.9	31.7	29.4	26.9
	SDT	73.9	83.3	92.8	102.0	112.0	121.0	130.0	140.0
	KW	1.33	1.50	1.68	1.90	2.13	2.39	2.68	3.00
38TSA036-33									
30	TCG	32.9	31.2	29.4	27.6	25.7	23.7	21.6	19.4
	SDT	68.7	78.4	88.0	97.7	107.0	117.0	126.0	136.0
	KW	1.52	1.74	1.98	2.24	2.52	2.82	3.13	3.46
35	TCG	36.1	34.2	32.3	30.4	28.4	26.3	24.0	21.7
	SDT	69.9	79.5	89.2	98.8	108.0	118.0	127.0	137.0
	KW	1.52	1.74	1.98	2.24	2.53	2.84	3.16	3.50
40	TCG	39.4	37.5	35.4	33.4	31.2	28.9	26.6	24.0
	SDT	71.2	80.8	90.4	99.9	109.0	119.0	128.0	138.0
	KW	1.52	1.74	1.98	2.24	2.54	2.85	3.18	3.53
45	TCG	43.0	40.9	38.7	36.5	34.2	31.8	29.2	26.5
	SDT	72.5	82.1	91.6	101.0	111.0	120.0	129.0	139.0
	KW	1.52	1.73	1.98	2.25	2.54	2.86	3.20	3.56
50	TCG	46.8	44.5	42.2	39.9	37.4	34.8	32.1	29.2
	SDT	73.9	83.5	93.0	102.0	112.0	121.0	131.0	140.0
	KW	1.52	1.74	1.98	2.25	2.55	2.87	3.22	3.59
55	TCG	50.8	48.4	45.9	43.4	40.7	38.0	35.0	31.9
	SDT	75.5	84.9	94.4	104.0	113.0	123.0	132.0	141.0
	KW	1.52	1.74	1.98	2.26	2.56	2.88	3.23	3.61

See notes on pg. 40.

Condenser only ratings* continued

SST °F		CONDENSER ENTERING AIR TEMPERATURES °F							
		55	65	75	85	95	105	115	125
38TSA042-33									
30	TCG	38.6	36.5	34.5	32.4	30.4	28.3	26.2	23.9
	SDT	70.3	80.0	89.6	99.2	109.0	118.0	128.0	137.0
	KW	1.72	1.96	2.22	2.53	2.86	3.24	3.66	4.11
35	TCG	42.3	40.0	37.8	35.6	33.4	31.1	28.8	26.3
	SDT	71.7	81.3	90.8	100.0	110.0	120.0	129.0	138.0
	KW	1.74	1.98	2.25	2.55	2.89	3.26	3.68	4.13
40	TCG	46.2	43.8	41.4	39.0	36.6	34.1	31.6	28.9
	SDT	73.2	82.7	92.2	102.0	111.0	121.0	130.0	139.0
	KW	1.77	2.01	2.28	2.58	2.92	3.29	3.70	4.16
45	TCG	50.5	47.9	45.3	42.6	40.0	37.3	34.5	31.5
	SDT	74.7	84.2	93.6	103.0	113.0	122.0	131.0	140.0
	KW	1.80	2.04	2.31	2.61	2.95	3.32	3.73	4.18
50	TCG	55.0	52.1	49.3	46.5	43.6	40.7	37.6	34.4
	SDT	76.3	85.7	95.1	105.0	114.0	123.0	132.0	142.0
	KW	1.83	2.07	2.34	2.65	2.98	3.36	3.77	4.21
55	TCG	59.7	56.7	53.6	50.5	47.4	44.2	40.9	37.4
	SDT	78.1	87.4	96.7	106.0	115.0	125.0	134.0	143.0
	KW	1.87	2.11	2.38	2.69	3.02	3.39	3.80	4.25
38TSA048-31									
30	TCG	44.6	42.1	39.7	37.3	34.8	32.3	29.6	26.7
	SDT	72.6	81.9	91.1	100.4	109.6	118.8	127.9	136.9
	KW	2.31	2.63	2.98	3.37	3.80	4.28	4.80	5.38
35	TCG	49.1	46.5	43.8	41.1	38.4	35.6	32.6	29.3
	SDT	74.3	83.4	92.6	101.7	110.9	120.0	128.9	137.9
	KW	2.36	2.67	3.02	3.41	3.84	4.32	4.84	5.41
40	TCG	54.0	51.1	48.1	45.2	42.1	39.0	35.7	32.1
	SDT	76.0	85.1	94.1	103.2	112.2	121.2	130.1	138.8
	KW	2.41	2.71	3.07	3.46	3.88	4.36	4.88	5.44
45	TCG	59.2	56.0	52.7	49.5	46.1	42.6	38.9	34.9
	SDT	77.8	86.8	95.8	104.7	113.6	122.5	131.2	139.9
	KW	2.46	2.76	3.12	3.51	3.93	4.40	4.91	5.47
50	TCG	64.7	61.1	57.6	54.0	50.2	46.4	42.3	37.9
	SDT	79.7	88.6	97.4	106.3	115.1	123.8	132.4	140.9
	KW	2.52	2.82	3.17	3.56	3.99	4.45	4.96	5.51
55	TCG	70.4	66.5	62.6	58.6	54.5	50.3	45.8	40.9
	SDT	81.8	90.5	99.3	108.0	116.6	125.3	133.7	142.0
	KW	2.58	2.88	3.23	3.62	4.05	4.51	5.01	5.55
38TSA060-30									
30	TCG	55.9	52.8	49.8	46.8	43.7	40.5	37.1	33.5
	SDT	72.6	81.9	91.1	100.4	109.6	118.8	127.9	136.9
	KW	2.50	2.84	3.22	3.64	4.10	4.63	5.19	5.82
35	TCG	61.6	58.2	54.9	51.6	48.1	44.6	40.8	36.8
	SDT	74.3	83.4	92.6	101.7	110.9	120.0	128.9	137.9
	KW	2.55	2.88	3.26	3.68	4.15	4.67	5.23	5.85
40	TCG	67.7	64.0	60.4	56.6	52.8	48.9	44.7	40.2
	SDT	76.0	85.1	94.1	103.2	112.2	121.2	130.1	138.8
	KW	2.60	2.93	3.32	3.74	4.19	4.71	5.27	5.88
45	TCG	74.2	70.2	66.1	62.0	57.8	53.4	48.8	43.8
	SDT	77.8	86.8	95.8	104.7	113.6	122.5	131.2	139.9
	KW	2.66	2.98	3.37	3.79	4.25	4.76	5.31	5.92
50	TCG	81.1	76.6	72.2	67.6	63.0	58.1	53.0	47.5
	SDT	79.7	88.6	97.4	106.3	115.1	123.8	132.4	140.9
	KW	2.72	3.05	3.43	3.85	4.31	4.81	5.36	5.95
55	TCG	88.3	83.4	78.5	73.5	68.4	63.0	57.4	51.3
	SDT	81.8	90.5	99.3	108.0	116.6	125.3	133.7	142.0
	KW	2.79	3.12	3.50	3.92	4.37	4.87	5.42	6.00

* ARI listing applies only to systems shown in Combination Ratings table.

KW — Outdoor Unit Kilowatts Only

SDT — Saturated Temperature Leaving Compressor (°F)

SST — Saturated Temperature Entering Compressor (°F)

TCG — Gross Cooling Capacity (1000 Btuh)

System design summary

1. Intended for outdoor installation with free air inlet and outlet. Outdoor fan external static pressure available is less than 0.01-in. wc.
2. Minimum outdoor operating air temperature without low-ambient operation accessories is 55°F (12.8°C). For Low Ambient applications see the Accessory Usage Guideline in this literature for accessory requirements.
3. Maximum outdoor operating air temperature is 125°F (51.7°C).
4. For reliable operation unit should be level in all horizontal planes within 2 degrees (+/- 3/8 in./ft).
5. Maximum elevation of indoor coil above or below base of outdoor unit without additional consideration is 20 ft. For applications greater than 20 ft, consult the Application Guideline and Service Manual for Air Conditioners and Heat Pumps Using Puron® Refrigerant, Long Line Guideline section. For long line accessories see Accessory Usage Guideline in this literature.
6. For vapor line sizing and capacity losses for interconnecting refrigerant tubing lengths greater than 50 ft and/or 20 ft vertical differential, consult the Application Guideline and Service Manual for Air Conditioners and Heat Pumps Using Puron® Refrigerant. Only 3/8 in. liquid lines are approved for long line applications on Residential products.
7. If any refrigerant tubing is buried, provide a 6 in. vertical rise to the outdoor unit service valve connections. Refrigerant tubing lengths up to 36 in. may be buried without further consideration. Do NOT bury refrigerant lines longer than 36 in.
8. Use only copper wire for electric connections at unit. Aluminum and clad aluminum wiring are NOT acceptable for the type of connector provided.
9. Do not apply capillary tube indoor coils to these units.
10. Factory-supplied filter drier must be installed. Filter drier must be replaced whenever refrigerant system is opened to the atmosphere for servicing.
11. If factory-supplied TXV (Thermostatic Expansion Valve) or LLS (Liquid Line Solenoid) is provided, do not deviate or substitute them. If they are not provided from the factory and are required for the application, use only the approved TXV or LLS listed in the Accessories section of this literature.

Guide specifications

Air-Cooled, Split-System Air Conditioner 38TSA 2 to 5 Tons Nominal

GENERAL

System Description

Outdoor-mounted, air-cooled, split-system air conditioner unit suitable for ground or rooftop installation. Unit consists of a hermetic compressor, an air-cooled coil, propeller-type condenser fan, and a control box. Unit will discharge supply air upward as shown on contract drawings. Unit will be used in a refrigeration circuit to match up to a packaged fan coil or coil unit.

Quality Assurance

Unit will be rated in accordance with the latest edition of ARI Standard 210.

Unit will be certified for capacity and efficiency, and listed in the latest ARI directory.

Unit construction will comply with latest edition of ANSI/ASHRAE and with NEC.

Unit will be constructed in accordance with UL standards and will carry the UL label of approval. Unit will have c-UL approval.

Unit cabinet will be capable of withstanding Federal Test Method Standard No. 141 (Method 6061) 500-hr salt spray test.

Air-cooled condenser coils will be leak tested at 250 psig and pressure tested at 450 psig.

Unit constructed in ISO9001 approved facility.

Delivery, Storage, and Handling

Unit will be shipped as single package only and is stored and handled per unit manufacturer's recommendations.

Warranty (for inclusion by specifying engineer)

U.S. and Canada only.

PRODUCTS

Equipment

Factory assembled, single piece, air-cooled air conditioner unit. Contained within the unit enclosure is all factory wiring, piping, controls, compressor, refrigerant charge Puron®, and special features required prior to field start-up.

Refrigerant

Refrigerant will be Puron HFC refrigerant with zero ozone depletion potential. Puron is approved under the EPA's Significant New Alternatives Policy (SNAP) Program.

Unit Cabinet

Unit cabinet will be constructed of galvanized steel, bonderized, and coated with a powder coat paint.

Fans

Condenser fan will be direct-drive propeller type, discharging air upward.

Condenser fan motors will be totally enclosed, 1-phase type with class B insulation and permanently lubricated bearings.

Shafts will be corrosion resistant.

Fan blades will be statically and dynamically balanced.

Condenser fan openings will be equipped with PVC-coated steel wire safety guards.

Compressor

Compressor will be hermetically sealed.

Compressor will be mounted on rubber vibration isolators.

Condenser Coil

Condenser coil will be air cooled.

Coil will be constructed of aluminum fins mechanically bonded to copper tubes which are then cleaned, dehydrated, and sealed.

Refrigeration Components

Refrigeration circuit components will include liquid-line shutoff valve with sweat connections, vapor-line shutoff valve with sweat connections, system charge of refrigerant Puron® (R-410A), and compressor oil.

Unit will be equipped with factory supplied high pressure switch, low pressure switch, and filter drier for Puron refrigerant.

Operating Characteristics

The capacity of the unit will meet or exceed — Btuh at a suction temperature of — °F. The power consumption at full load will not exceed — kW.

Combination of the unit and the evaporator or fan coil unit will have a total net cooling capacity of — Btuh or greater at conditions of — CFM entering air temperature at the evaporator at — °F wet bulb and — °F dry bulb, and air entering the unit at — °F.

The system will have a SEER of — Btuh/watt or greater at DOE conditions.

Electrical Requirements

Nominal unit electrical characteristics will be — v, single phase, 60 hz. The unit will be capable of satisfactory operation within voltage limits of —v to —v.

Unit electrical power will be single point connection.

Control circuit will be 24v.

Special Features

Refer to section of this literature identifying accessories and descriptions for specific features and available enhancements.

